

Crash Test Results

New Car Safety

VOLVO V70 (LHD)

2008 on

Front+side+head airbags



Offset crash test at 64km/h

FRONTAL OFFSET CRASH TEST (v4.1)

Body region scores out of 4 points each: Head/neck 4 pts, chest 3.51 pts, upper legs 4 pts, lower legs 3.69 pts.

The passenger compartment held its shape well in the offset crash test. The accelerator pedal moved rearwards by 50 mm. The brake pedal moved upwards 27 mm. The steering wheel hub moved 73mm forward, 18mm downward and 3 mm sideways. The front ("A") pillar moved 12 mm rearwards. All doors remained closed during the crash. After the crash the driver's door could be opened with normal effort.

The airbag cushioned the head of the driver and contact was stable. There were no knee hazards. The passenger's head was cushioned by the airbag.

SIDE IMPACT CRASH TEST (v4.1)

Body region scores out of 4 points each: Head 4 pts, chest 4 pts, abdomen 4 pts, pelvis 4 pts.

The vehicle was eligible for an optional pole impact test, since it had head-protecting side airbags and scored four points for the head in the side impact test. The manufacturer decided to go ahead with the pole test. The side curtain did not fully deploy and the vehicle earned one point out of two.

PEDESTRIAN PROTECTION: 2 Stars

Occupant Protection Score 34.20 out of 37

Variant: Kinetic

Eng: 2.4 diesel

Kerb weight: 1730 kg

Category: Medium car

Vehicles built: 2007

Tested by Euro NCAP

Important note: The *diesel left-hand-drive* European model was tested by Euro NCAP. Australasian specifications may vary and therefore models sold in Australasia might provide different levels of protection to those described on this page.

Model History and Safety Features

The tested model of Volvo V70 was introduced in Australia during 2008.

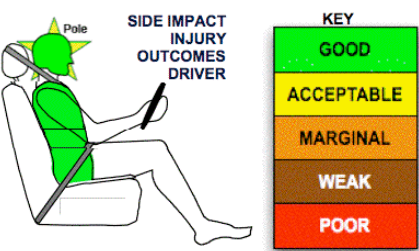
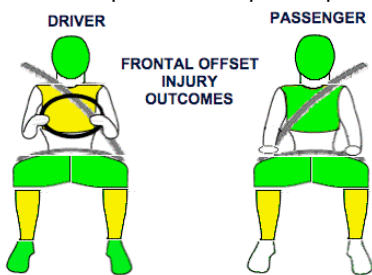
Dual front airbags, side airbags and head-protecting side curtains are standard equipment. Antilock brakes (ABS), electronic brake distribution (EBD) and electronic stability control (ESC) are also standard along with several other advanced safety features.. Intelligent seat belt reminders are fitted to both front seats.


The front seat belt buckles are mounted on the seats and the upper anchorages are adjustable. These features improve the fit of the seat belt. Pretensioners are fitted to all seat belts to reduce slack in the event of a crash. The outboard rear seats have integrated two-stage booster seats for child occupants.

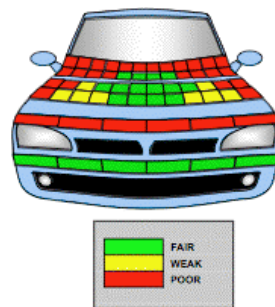
OCCUPANT PROTECTION: 5.000 Stars

The Volvo V70 scored 15.20 out of 16 in the offset crash test. The passenger compartment held its shape well. There was a slight risk of serious chest and leg injury for the driver.

The vehicle scored 16 out of 16 in the side impact crash test and one point in the optional pole test.



PEDESTRIAN PROTECTION		
 ANCAP Rated ★ ★ ★ ★ Tested by Euro NCAP v4.1	Child head impacts	7.63
	Adult head impacts	2
	Upper leg impacts	Zero
	Lower leg impacts	6
	Total (out of 36)	15.63



March 2008

PO Box 4041

Manuka ACT 2603

v70_08.doc

Issued 10/3/08



TECHNICAL DATA - VOLVO V70 - 2008 on

INJURY MEASUREMENTS

Body region	Offset Crash Test at 64km/h (v4.1)		Side Impact Crash Test at 50km/h (v4.1)
	Driver	Passenger	Driver
Head HIC	235	301	44
Acceleration (g for 3ms)	36.5	44.0	21.6
Neck - Shear (kN)	0.55	0.43	-
Tension (kN)	0.68	0.31	-
Extension (Nm)	25.7	13.4	-
Chest Accln (g for 3ms)			-
Compression (mm)	25.41	19.46	13.00
Viscous criterion (m/s)	0.11	0.05	0.09
Abdomen - Force (kN)	-	-	0.210
Pelvis - Force (kN)	-	-	0.820
Upper legs Force (kN)			
Left	Zero	Zero	
Right	Zero	Zero	
Knee displ (mm)			
Left	Zero	Zero	
Right	Zero	Zero	
Lower legs Force (kN)			
Left	1.75	2.04	
Right	2.26	2.03	
Index (Upper/Low)			
Left	0.42/0.18	0.47/0.33	
Right	0.45/0.22	0.46/0.12	

Bonus points (maximum 5)

Pole Test: 1 pts

Seat belt reminders: 2 (see table below for details)

Modifiers - deductions from offset test scores

Head	No deduction
Chest	No deduction
Upper leg Variable & conc. loading	No deduction
Lower leg	No deduction
Foot score	Score 4 points

Modifiers - deductions from side impact test scores

Chest	No deduction
Pole test Incorrect curtain deployment	1 pt deduction

Safety features

These specifications are subject to change. Please check with manufacturer for the latest specifications.



Driver airbag	S	Antilock (ABS) brakes / Electronic brake distribution / Brake Assist	S/S/S
Passenger front airbag	S	Electronic stability control (ESC, VSC, DSC, ESP, VSA)	S#
Side airbags, front seats - chest protection	S	3 point centre rear seat belt	S
Side airbags, front seats - head protection	S	Active head restraints - front seats	S
Side airbags, rear seats - head protection	S	Intelligent seat belt reminder - driver	S
Driver knee airbag	X	Intelligent seat belt reminder - front passenger	S
Seat belt pretensioners (Front/Rear)	S/S	Rear seat belt status indicator	S*

Key: * Although a rear seat belt reminder is fitted, Euro NCAP found it did not meet requirements for a bonus point.

S = standard on all variants

O = optional on base variant. May be standard on higher variants

V= not available on base variant but standard or optional on higher variants

X = not available on any variant

ESC required by ANCAP for 5 star rating from 2008