

Crash Test Results

New Car Safety

VW up!

From 2012 Front+side+head airbags



Offset crash test at 64km/h



ANCAP
Safety ★★★★★

Safety Rating

Occupant Protection Score 33.37 out of 37

Tested variant: 3 door hatch Eng: 1.0 Petrol

Kerb mass 855kg Category: CAR - LIGHT

Vehicles built: 2011 Tested by Euro NCAP

Important note: The 3-door left-hand-drive European model was tested by Euro NCAP. Australasian specifications may vary and therefore models sold in Australasia might provide different levels of protection to those described on this page.

Model History and Safety Features

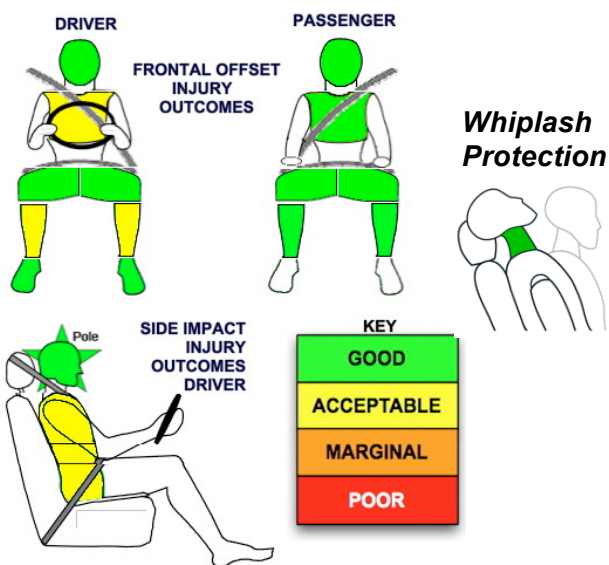
The tested model of the Volkswagen up! is being introduced in Australia during 2012. This ANCAP rating applies to all 3-door and 5-door hatch variants*.

Dual front airbags and side airbags with thorax & head protection for front occupants are standard equipment. Antilock brakes (ABS), electronic stability control (ESC), autonomous emergency braking (AEB) and daytime running lights are also standard. Intelligent seat belt reminders are fitted to all four seats.

OCCUPANT PROTECTION: 5 Stars

The up! scored 14.2 out of 16 in the offset crash test. The passenger compartment held its shape well. There was a slight risk of serious chest and leg injury for the driver.

The vehicle scored 14.17 out of 16 in the side impact crash test. There was a slight risk of serious thorax injury for the driver. The vehicle scored a further two points in the pole test.



FRONTAL OFFSET CRASH TEST

Body region scores out of 4 points each: Head/neck 4pts, chest 3.2 pts, upper legs 4pts, lower legs 3pts.

The passenger compartment held its shape well in the offset crash test. The accelerator pedal moved rearwards by 37 mm. The clutch pedal moved upwards 28 mm. The steering wheel hub moved 42mm forward, 27mm downward and 8 mm sideways. The front ("A") pillar moved 4 mm rearwards. All doors remained closed during the crash. After the crash the driver's door could be opened with normal effort.

The airbag cushioned the head of the driver and contact was stable. There were no knee hazards. The passenger's head was cushioned by the airbag.

SIDE IMPACT CRASH TEST

Body region scores out of 4 points each: Head 4pts, chest 3.28pts, abdomen 3.44pts, pelvis 3.45pts.

The vehicle was eligible for a pole impact test, since it had head-protecting side airbags. The vehicle earned the maximum two points in this test.

PEDESTRIAN PROTECTION: MARGINAL

The bumper provided mostly good protection to pedestrians' legs. However, the front edge of the bonnet was poor in all areas tested and scored no points. In those areas where a child's head might strike, the bonnet provided poor protection. In those areas where an adult's head would strike, protection was mixed, some areas providing good protection and others poor.

PEDESTRIAN PROTECTION	Child head impacts	5
MARGINAL	Adult head impacts	6.65
	Upper leg impacts	Zero
	Lower leg impacts	4.95
	Total (out of 36)	16.6

Tested by Euro NCAP v5.3



OCTOBER 2012

PO Box 4041

Manuka ACT 2603

up12.doc Rated: 2012

Issued 21/9/2012



ANCAP

Crash testing for safety

AUSTRALASIAN
NEW CAR ASSESSMENT
PROGRAM

www.ancap.com.au

* ANCAP was provided with technical information which showed that the 5-door hatch also meets the ANCAP requirements for a 5-star safety rating. However there was increased risk of leg injury for the driver and increased risk of chest injury for the passenger in the offset test. There was reduced risk of injury to the driver in the side impact test for the 5-door hatch.

TECHNICAL DATA - VW UP! - From 2012

INJURY MEASUREMENTS

Body region	Offset Crash Test at 64km/h (v)		Side Impact Crash Test at 50km/h (v)
	Driver	Passenger	Driver
Head HIC	326	463	42
Acceleration (g for 3ms)	42.9	55.5	20.3
Neck - Shear (kN)	0.50	0.70	-
Tension (kN)	1.22	1.10	-
Extension (Nm)	17.8	13.8	-
Chest Accln (g for 3ms)	-	-	-
Compression (mm)	27.47	19.76	7.96
Viscous criterion (m/s)	0.18	0.07	0.04
Abdomen - Force (kN)	-	-	1.21
Pelvis - Force (kN)	-	-	3.41
Upper legs Force (kN)			
Left	0.29	0.60	
Right	0.00	0.00	
Knee displ (mm)			
Left	0.00	0.00	
Right	0.00	0.00	
Lower legs Force (kN)			
Left	3.00	1.97	
Right	2.77	1.20	
Index (Upper/Low)			
Left	0.53 /0.63	0.21 /0.21	
Right	0.51 /0.30	0.29/0.15	

Bonus points (maximum 5)

Pole Test: 2 pts

Seat belt reminders: 3 (see table below for details)

Modifiers - deductions from offset test scores

Head	No deduction
Chest	No deduction
Upper leg	No deduction
Lower leg	No deduction
Foot score	Score 4 points

Modifiers - deductions from side impact test scores

Chest Backplate load	0.72pt deduction
----------------------	------------------

Safety features

These specifications are subject to change. Please check with manufacturer for the latest specifications.



Driver airbag	S	Antilock (ABS) brakes / Electronic brake distribution / Brake Assist	S/S/S
Passenger front airbag	S	Electronic stability control (ESC, VSC, DSC, ESP, VSA)	S#
Side airbags, front seats - chest protection	S	3 point seat belt for all forward-facing seats	S
Side airbags, front seats - head protection	S	Whiplash protection (RCAR protocol)	Good
Side airbags, rear seats - head protection	X	Intelligent seat belt reminder - driver	S
Driver knee airbag	X	Intelligent seat belt reminder - front passenger	S
Seat belt pretensioners (Front/Rear outboard)	S/X	Intelligent seat belt reminder - rear seats	S

Key:

S = standard on all variants

O = optional on base variant. May be standard on higher variants

V= not available on base variant but standard or optional on higher variants

X = not available on any variant

ESC required by ANCAP for 5 star rating from 2008