

Crash Test Results

New Car Safety

VW TRANSPORTER (LHD)

2008 on Dual front airbags*



Offset crash test at 64km/h

FRONTAL OFFSET CRASH TEST (v4.1)

Body region scores out of 4 points each: Head/neck 4 pts, chest 2.15 pts, upper legs 2 pts, lower legs 2.78 pts.

The passenger compartment held its shape well in the offset crash test except that clutch pedal moved rearwards by 116 mm and upwards 92 mm. The steering wheel hub moved 61mm forward, 2mm downward and 21 mm sideways. The front ("A") pillar moved 3 mm rearwards. All doors remained closed during the crash. After the crash all doors could be opened with normal effort.

The airbag cushioned the head of the driver and contact was stable. Steering column and dash components were a potential source of injury for the driver's knees. The passenger's head was cushioned by the airbag. Passenger head protection might not be as good without the airbag. Dash and centre console components were a potential knee hazard for the passenger.


SIDE IMPACT CRASH TEST (v4.1)

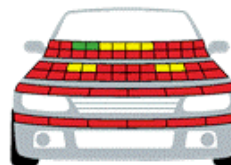
Body region scores out of 4 points each: Head 4 pts, chest 4 pts, abdomen 4 pts, pelvis 4 pts.

The side impact test simulates a small car striking the driver's door of the vehicle under test. It is based on a regulation test but the regulation does not apply to vehicles with a high seat height like the Transporter. Experience shows that such vehicles can be expected to perform well in this test and the Transporter scored full marks.

PEDESTRIAN PROTECTION: 1 Star

Both the bumper and the front edge of the bonnet scored no points for its protection of pedestrians' legs. The bonnet was rated as predominantly weak for the protection it offered to the head of a struck adult or child.

PEDESTRIAN PROTECTION		
 Rated ★ ★ ★ ★	Child head impacts	1.33
	Adult head impacts	1.88
	Upper leg impacts	Zero
	Lower leg impacts	Zero
	Total (out of 36)	3.21



Pedestrian protection

■ GOOD
■ ADEQUATE
■ MARGINAL


ANCAP
Occupant Protection
Rated ★ ★ ★ ★ ★

Occupant Protection Score 26.93 out of 37

* Safety equipment, as tested, not standard on all variants

Variant: Bus Eng: 2 litre diesel
 Kerb weight: 1945 kg Categories: Van & MPV
 Vehicles built: 2008 Tested by Euro NCAP

Important note: The diesel left-hand-drive European small bus was tested by Euro NCAP. Australasian specifications may vary and therefore models sold in Australasia might provide different levels of protection to those described on this page. The Transporter van can be expected to provide similar front occupant protection to the small bus tested by Euro NCAP.

Model History and Safety Features

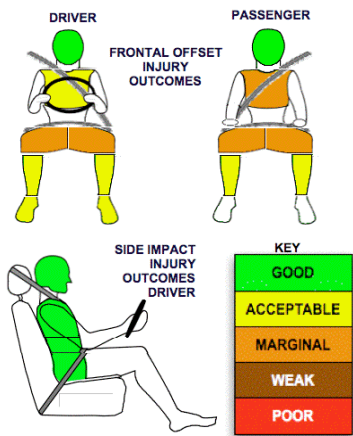
The tested model of VW Transporter was introduced in Australia during 2008.

A driver airbag and antilock brakes (ABS) with electronic brake distribution (EBD) are standard equipment. A passenger airbag is optional on the 1.9TDI variant and standard on the other variants. Side airbags and head-protecting side curtains and electronic stability control (ESC) are optional, although ESC is not available for the Citivan in Australia. Some New Zealand variants have more standard safety features. The front seat belt buckles are mounted on the seats and the upper anchorages are adjustable. These features improve the fit of the seat belt. Pretensioners are fitted to the front seat belts to reduce slack in the event of a crash. Three point seat belt are fitted to all seats. These provide better protection than a two point (lap) seat belt.

OCCUPANT PROTECTION: 4 Stars

The Transporter scored 10.93 out of 16 in the offset crash test. The passenger compartment held its shape well except for clutch pedal movement. Protection from serious leg injury was marginal for the driver and passenger. There was a moderate risk of serious chest injury for the passenger.

The vehicle scored 16 out of 16 in the side impact crash test. This is the first 4 star van rated by ANCAP.



July 2008
 PO Box 4041
 Manuka ACT 2603
 transporter08.doc
 Issued 30/6/2008



ANCAP

Crash testing for safety

AUSTRALASIAN
NEW CAR ASSESSMENT
PROGRAM

TECHNICAL DATA - VW TRANSPORTER - 2008 on

INJURY MEASUREMENTS

Body region	Offset Crash Test at 64km/h (v4.1)		Side Impact Crash Test at 50km/h (v4.1)
	Driver	Passenger	Driver
Head HIC	457	436	72
Acceleration (g for 3ms)	50.9	55.7	41.9
Neck - Shear (kN)	0.49	0.43	-
Tension (kN)	1.82	1.03	-
Extension (Nm)	29.3	10.9	-
Chest Accln (g for 3ms)	-	-	-
Compression (mm)	30.36	34.94	17.08
Viscous criterion (m/s)	0.16	0.15	0.06
Abdomen - Force (kN)	-	-	0.250
Pelvis - Force (kN)	-	-	0.510
Upper legs Force (kN)			
Left	0.20	2.23	
Right	0.64	1.04	
Knee displ (mm)			
Left	0.10	0.00	
Right	0.20	0.40	
Lower legs Force (kN)			
Left	1.51	2.22	
Right	1.58	2.68	
Index (Upper/Low)			
Left	0.45 /0.18	0.34 /0.18	
Right	0.38 /0.22	0.5/0.17	

Bonus points (maximum 5)

Pole Test: Not eligible due to a lack of head-protecting side airbags

Seat belt reminders: None

Modifiers - deductions from offset test scores

Head	No deduction
Chest	No deduction
Upper leg Variable & conc. loading for driver and passenger	2 pt deduction Left & Right
Lower leg	No deduction
Foot score Clutch movement	Score 3.36 points

Modifiers - deductions from side impact test scores

Chest	No deduction
-------	--------------

Safety features

These specifications are subject to change. Please check with manufacturer for the latest specifications.



Driver airbag	S	Antilock (ABS) brakes / Electronic brake distribution / Brake Assist	S/S/X
Passenger front airbag	O ✓	Electronic stability control (ESC, VSC, DSC, ESP, VSA)	O#
Side airbags, front seats - chest protection	O	3 point centre rear seat belt	S
Side airbags, front seats - head protection	O	Active head restraints - front seats	X
Side airbags, rear seats - head protection	O	Intelligent seat belt reminder - driver	X
Driver knee airbag	X	Intelligent seat belt reminder - front passenger	X
Seat belt pretensioners (Front/Rear outboard)	S/-	Rear seat belt status indicator	X

Key: ✓ = Fitted to vehicle that was crash tested (where not standard)

S = standard on all variants

O = optional on base variant. May be standard on higher variants

V= not available on base variant but standard or optional on higher variants

X = not available on any variant

ESC required by ANCAP for 5 star rating from 2008