

# Crash Test Results

## New Car Safety

### VW TIGUAN (LHD)

2008 on

Front+side+head airbags



Offset crash test at 64km/h

#### FRONTAL OFFSET CRASH TEST (v4.1)

Body region scores out of 4 points each: Head/neck 4 pts, chest 3.68 pts, upper legs 3 pts, lower legs 3.57 pts.

The passenger compartment held its shape well in the offset crash test. The brake pedal moved rearwards by 29 mm and upwards 2 mm. The steering wheel hub moved 63mm forward, 14mm downward and 1mm sideways. The front ("A") pillar moved 5 mm rearwards. All doors remained closed during the crash. After the crash all door could be opened with normal effort.

The airbag cushioned the head of the driver and contact was stable. Steering column and dash components were a potential source of injury for the driver's knees. The passenger's head was cushioned by the airbag.

#### SIDE IMPACT CRASH TEST (v4.1)

Body region scores out of 4 points each: Head 4 pts, chest 4 pts, abdomen 4 pts, pelvis 4 pts.

The side impact test simulates a small car striking the driver's door of the vehicle under test. It is based on a regulation test but the regulation does not apply to vehicles with a high seat height like the Tiguan. Experience shows that such vehicles can be expected to perform well in this test and the Tiguan scored full marks. The vehicle was eligible for an optional pole impact test, since it had head-protecting side airbags and scored four points for the head in the side impact test. The manufacturer decided to go ahead with the pole test and the vehicle earned a further two points.

#### PEDESTRIAN PROTECTION: 2 Stars

The bumper scored maximum points for the protection it offered to pedestrians' legs. However, the front edge of the bonnet provided poor levels of protection.

**Occupant Protection Score 34.25 out of 37**

Variant: Trend

Eng: 2litre diesel

Kerb weight: 1590 kg

Category: 4WD - MEDIUM

Vehicles built: 2008

Tested by Euro NCAP

**Important note:** The *diesel left-hand-drive* European model was tested by Euro NCAP. Australasian specifications may vary and therefore models sold in Australasia might provide different levels of protection to those described on this page.

#### Model History and Safety Features

The tested model of Tiguan was introduced in Australia and New Zealand during 2008.

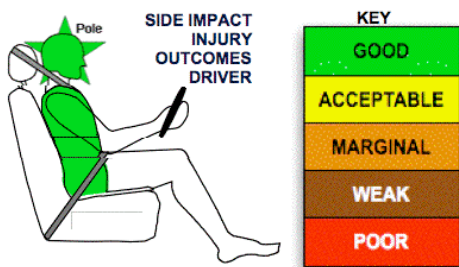
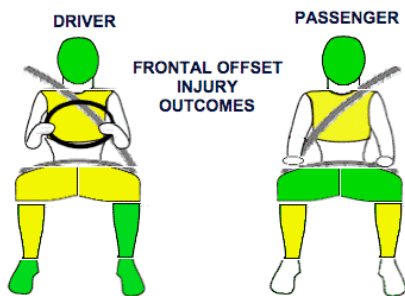
Dual front airbags, side airbags and head-protecting side curtains are standard equipment. Antilock brakes (ABS), electronic brake distribution (EBD) and electronic stability control (ESC) are also standard. Intelligent seat belt reminders are fitted to both front seats.


The front seat belt buckles are mounted on the seats and the upper anchorages are adjustable. These features improve the fit of the seat belt. Pretensioners are fitted to the front seat belts to reduce slack in the event of a crash. A three point seat belt is fitted to the centre rear seat. This provides better protection than a two point (lap) seat belt.

#### OCCUPANT PROTECTION: 5 Stars

The Tiguan scored 14.25 out of 16 in the offset crash test. The passenger compartment held its shape well. There was a slight risk of serious chest and leg injury for the driver and passenger.

The vehicle scored 16 out of 16 in the side impact crash test and a further two points in the optional pole test.



| PEDESTRIAN PROTECTION   |                    |       |
|---|--------------------|-------|
| <br>ANCAP<br>Rated ★ ★ ★ ★<br>Tested by Euro NCAP v4.1 | Child head impacts | 5.28  |
|   | Adult head impacts | 5.92  |
|   | Upper leg impacts  | Zero  |
|   | Lower leg impacts  | 6     |
|   | Total (out of 36)  | 17.20 |



Pedestrian protection

■ GOOD  
■ ADEQUATE  
■ MARGINAL

July 2008

PO Box 4041

Manuka ACT 2603

tiguan089.doc

Issued 27/6/2008



**ANCAP**

Crash testing for safety

AUSTRALASIAN  
NEW CAR ASSESSMENT  
PROGRAM

# TECHNICAL DATA - VW TIGUAN - 2008 on

## INJURY MEASUREMENTS

| Body region                    | Offset Crash Test at 64km/h<br>(v4.1) |            | Side Impact Crash<br>Test at 50km/h<br>(v4.1) |
|--------------------------------|---------------------------------------|------------|---|
|                                | Driver                                | Passenger  | Driver  |
| <b>Head HIC</b>                | 378                                   | 467        | 36  |
| Acceleration (g for 3ms)       | 43.9                                  | 53.2       | 23.5  |
| <b>Neck - Shear (kN)</b>       | 0.31                                  | 0.51       | -   |
| Tension (kN)                   | 1.19                                  | 0.92       | -   |
| Extension (Nm)                 | 16.4                                  | 18.6       | -   |
| <b>Chest Accln (g for 3ms)</b> | -                                     | -          | -   |
| Compression (mm)               | 22.43                                 | 24.21      | 12.07   |
| Viscous criterion (m/s)        | 0.08                                  | 0.06       | 0.05  |
| <b>Abdomen - Force (kN)</b>    | -                                     | -          | 0.420   |
| <b>Pelvis - Force (kN)</b>     | -                                     | -          | 1.060   |
| <b>Upper legs Force (kN)</b>   |                                       |            |   |
| Left                           | 0.15                                  | 0.52       |   |
| Right                          | 0.89                                  | 0.55       |   |
| <b>Knee displ (mm)</b>         |                                       |            |   |
| Left                           | 0.00                                  | 2.50       |   |
| Right                          | 3.70                                  | 0.00       |   |
| <b>Lower legs Force (kN)</b>   |                                       |            |   |
| Left                           | 1.30                                  | 2.51       |   |
| Right                          | 2.35                                  | 2.65       |   |
| <b>Index (Upper/Low)</b>       |                                       |            |   |
| Left                           | 0.36 /0.28                            | 0.24 /0.30 |   |
| Right                          | 0.27 /0.33                            | 0.29/0.26  |   |

### Bonus points (maximum 5)

Pole Test: 2 pts

Seat belt reminders: 2 (see table below for details)

### Modifiers - deductions from offset test scores

|                            |                             |
|----------------------------|-----------------------------|
| Head                       | No deduction                |
| Chest                      | No deduction                |
| Upper leg Variable loading | 1 pt deduction Left & Right |
| Lower leg                  | No deduction                |
| Foot score                 | Score 4 points              |

### Modifiers - deductions from side impact test scores

|       |              |
|-------|--------------|
| Chest | No deduction |
|-------|--------------|

### Safety features

These specifications are subject to change. Please check with manufacturer for the latest specifications.



|   |     |  |       |
|---|-----|--|-------|
| Driver airbag                                 | S   | Antilock (ABS) brakes / Electronic brake distribution / Brake Assist | S/S/S |
| Passenger front airbag                        | S   | Electronic stability control (ESC, VSC, DSC, ESP, VSA)               | S#    |
| Side airbags, front seats - chest protection  | S   | 3 point centre rear seat belt  | S     |
| Side airbags, front seats - head protection   | S   | Active head restraints - front seats                                 | S     |
| Side airbags, rear seats - head protection    | S   | Intelligent seat belt reminder - driver                              | S     |
| Driver knee airbag                            | X   | Intelligent seat belt reminder - front passenger                     | S     |
| Seat belt pretensioners (Front/Rear outboard) | S/X | Rear seat belt status indicator                                      | X     |

Key:

S = standard on all variants

O = optional on base variant. May be standard on higher variants

V= not available on base variant but standard or optional on higher variants

X = not available on any variant

# ESC required by ANCAP for 5 star rating from 2008