

Crash Test Results

New Car Safety

VW PASSAT CC (LHD)

2009 on

Front+side+head airbags



Offset crash test at 64km/h (sedan)

FRONTAL OFFSET CRASH TEST (v4.1)

Body region scores out of 4 points each: Head/neck 4 pts, chest 3.97 pts, upper legs 3 pts, lower legs 3.02 pts.

The passenger compartment held its shape well in the offset crash test. The brake pedal moved rearwards by 22 mm and downwards 5mm. The steering wheel hub moved forwards 31mm, downwards 4mm and sideways 5 mm. The front ("A") pillar moved 6 mm rearwards. All doors remained closed during the crash. After the crash high manual effort was required to open the driver's door.

The airbag cushioned the head of the driver and contact was stable. Steering column components were a potential source of injury for the driver's knees. The passenger's head was cushioned by the airbag.

SIDE IMPACT CRASH TEST (v4.1)

Body region scores out of 4 points each: Head 4 pts, chest 4 pts, abdomen 4 pts, pelvis 4 pts.

The vehicle was eligible for an optional pole impact test, since it had head-protecting side airbags. The manufacturer decided to go ahead with the pole test and the vehicle earned a further two points.

PEDESTRIAN PROTECTION: 2 Stars

This rating is based on the Passat sedan tested by Euro NCAP. The Passat CC has a slightly lower ride height and this may affect pedestrian protection.



Occupant Protection Score 33.99 out of 37

Variant: Diesel

Eng: 1.9

Kerb weight: 1450 kg

Category: CAR - MEDIUM

Vehicles built: 2005

Tested by Euro NCAP

Important note: The *diesel left-hand-drive* European Passat sedan model was tested by Euro NCAP. Australasian specifications may vary and therefore models sold in Australasia might provide different levels of protection to those described on this page. Volkswagen provided evidence to ANCAP that the Passat CC with diesel engine can be expected to provide comparable protection to the sedan tested by Euro NCAP.

Model History and Safety Features

The Passat CC was introduced in Australia during 2009. This ANCAP 5-star rating applies to the diesel variant of the Passat CC.

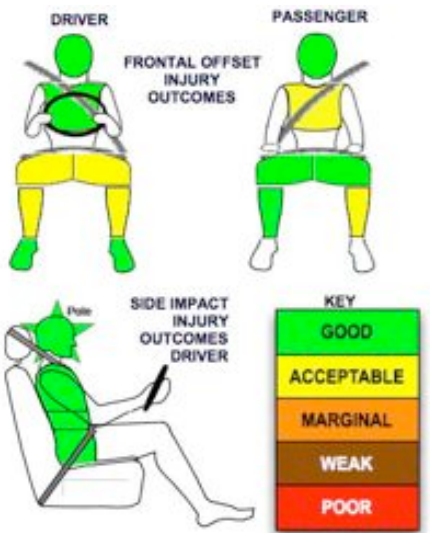
Dual front airbags, side airbags and head-protecting side curtains are standard equipment. Antilock brakes (ABS) with electronic brakeforce distribution (EBD), emergency brake assist, daytime running lights and electronic stability control (ESC) are also standard. Intelligent seat belt reminders are fitted to both front seats. A reversing camera is available.

Pretensioners are fitted to all seat belts to reduce slack in the event of a crash. There is no centre rear seat.

OCCUPANT PROTECTION: 5 Stars

The Passat scored 13.99 out of 16 in the offset crash test. The passenger compartment held its shape well. There was a slight risk of serious leg injury for the driver and a slight risk of serious chest and leg injury for the passenger.

The vehicle scored 16 out of 16 in the side impact crash test. A further 2 points were scored in the optional pole test.



PEDESTRIAN PROTECTION	Child head impacts	7.46
ANCAP Rated ★ ★ ★ ★ ★ Tested by Euro NCAP v4.1	Adult head impacts	3.06
	Upper leg impacts	Zero
	Lower leg impacts	6
	Total (out of 36)	16.52

No image of pedestrian protection is available

December 2009

PO Box 4041

Manuka ACT 2603

PASSAT_CC09.DOC

Issued 10/12/2009



ANCAP

Crash testing for safety

AUSTRALASIAN
NEW CAR ASSESSMENT
PROGRAM

TECHNICAL DATA - VW PASSAT CC - 2009 on

INJURY MEASUREMENTS

Body region	Offset Crash Test at 64km/h (v4.1)		Side Impact Crash Test at 50km/h (v4.1)
	Driver	Passenger	Driver
Head HIC	333	265	45
Acceleration (g for 3ms)	42.4	38.9	20.2
Neck - Shear (kN)	0.34	0.57	-
Tension (kN)	1.00	0.61	-
Extension (Nm)	18.3	20.2	-
Chest Accln (g for 3ms)	-	-	-
Compression (mm)	20.29	22.20	19.60
Viscous criterion (m/s)	0.07	0.06	0.28
Abdomen - Force (kN)	-	-	0.780
Pelvis - Force (kN)	-	-	0.010
Upper legs Force (kN)			
Left	0.35	0.20	
Right	0.81	0.42	
Knee displ (mm)			
Left	0.00	0.00	
Right	0.00	0.00	
Lower legs Force (kN)			
Left	2.15	2.14	
Right	3.15	1.59	
Index (Upper/Low)			
Left	0.54 /0.27	0.52 /0.27	
Right	0.62 /0.58	0.39/0.22	

Bonus points (maximum 5)

Pole Test: 2 pts

Seat belt reminders: 2 (see table below for details)

Modifiers - deductions from offset test scores

Head	No deduction
Chest	No deduction
Upper leg Variable loading	1 pt deduction Left & Right
Lower leg	No deduction
Foot score	Score 4 points

Modifiers - deductions from side impact test scores

Chest	No deduction
-------	--------------

Safety features

These specifications are subject to change. Please check with manufacturer for the latest specifications.



Driver airbag	S	Antilock (ABS) brakes / Electronic brake distribution / Brake Assist	S/S/S
Passenger front airbag	S	Electronic stability control (ESC, VSC, DSC, ESP, VSA)	S#
Side airbags, front seats - chest protection	S	3 point centre rear seat belt	N/A
Side airbags, front seats - head protection	S	Active head restraints - front seats	S
Side airbags, rear seats - head protection	S	Intelligent seat belt reminder - driver	S
Driver knee airbag	X	Intelligent seat belt reminder - front passenger	S
Seat belt pretensioners (Front/Rear outboard)	S/S	Intelligent seat belt reminder - rear seats	X

Key:

S = standard on all variants

O = optional on base variant. May be standard on higher variants

V= not available on base variant but standard or optional on higher variants

X = not available on any variant

ESC required by ANCAP for 5 star rating from 2008