

Crash Test Results

New Car Safety

VW JETTA

From 2011

Front+side+head airbags



Offset crash test at 64km/h



ANCAP

Rated ★★★★★

Occupant Protection

Occupant Protection Score 35.20 out of 37

Variant: TSi Trendline

Eng: 1.2 litre petrol

Kerb mass 1300 kg

Category: CAR - SMALL

Vehicles built: 2011

Tested by Euro NCAP

Important note: The 1.2 petrol left-hand-drive European model was tested by Euro NCAP. Australasian specifications may vary and therefore models sold in Australasia might provide different levels of protection to those described on this page.

Model History and Safety Features

The tested model of Jetta was introduced in Australia during 2011. This ANCAP rating currently applies to Jetta variants with a 1.2 or 1.4 litre petrol engine. Further technical information is being sought about other variants.

Dual front airbags, side airbags and head-protecting side curtains are standard equipment. Antilock brakes (ABS), electronic brakeforce distribution (EBD) and electronic stability control (ESC) are also standard. Intelligent seat belt reminders are fitted to both front seats.

Pretensioners are fitted to the front seat belts to reduce slack in the event of a crash.

OCCUPANT PROTECTION: 5 Stars

The Jetta scored 15.20 out of 16 in the offset crash test. The passenger compartment held its shape well. There was a slight risk of serious chest and leg injury for the driver and passenger.

The vehicle scored 16 out of 16 in the side impact crash test and a further two points in the pole test.

FRONTAL OFFSET CRASH TEST

Body region scores out of 4 points each: Head/neck 4 pts, chest 3.43 pts, upper legs 4 pts, lower legs 3.78 pts.

The passenger compartment held its shape well in the offset crash test. The accelerator pedal moved rearwards by 12 mm and downwards 1mm. The steering wheel hub moved 56mm forward, 25mm downward and 4 mm sideways. The front ("A") pillar moved 1 mm rearwards. All doors remained closed during the crash. After the crash all doors could be opened with normal effort.

The airbag cushioned the head of the driver and contact was stable. The passenger's head was cushioned by the airbag. There were no knee hazards.

SIDE IMPACT CRASH TEST

Body region scores out of 4 points each: Head 4 pts, chest 4 pts, abdomen 4 pts, pelvis 4 pts.

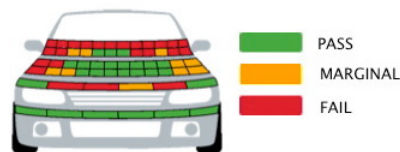
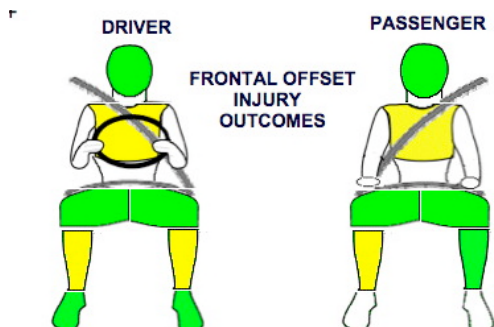
The vehicle was eligible for an optional pole impact test, since it had head-protecting side airbags. The vehicle earned the maximum two points in this test.

PEDESTRIAN PROTECTION: Acceptable

The bumper scored maximum points, providing good protection for pedestrians' legs at all points tested. In those areas likely to be struck by the head of a child, the bonnet provided predominantly good levels of protection. However, the protection offered to the head of an adult was predominantly poor.

| PEDESTRIAN PROTECTION | Child head impacts | 8.73 |
|-----------------------|--------------------|-------|
| ACCEPTABLE | Adult head impacts | 2.99 |
| | Upper leg impacts | 2.53 |
| | Lower leg impacts | 6 |
| | Total (out of 36) | 20.25 |

Tested by Euro NCAP v5.3



NOVEMBER 2011

PO Box 4041

Manuka ACT 2603

jetta11.doc

Issued 22/11/2011



ANCAP

Crash testing for safety

AUSTRALASIAN
NEW CAR ASSESSMENT
PROGRAM

TECHNICAL DATA - VW JETTA - From 2011

INJURY MEASUREMENTS

| Body region | Offset Crash Test at 64km/h (v5.1) | | Side Impact Crash Test at 50km/h (v5.1) |
|--------------------------------|---------------------------------------|------------|---|
| | Driver | Passenger | Driver |
| Head HIC | 291 | 309 | 79 |
| Acceleration (g for 3ms) | 40.7 | 44.5 | 29.1 |
| Neck - Shear (kN) | 0.16 | 0.10 | - |
| Tension (kN) | 1.31 | 0.89 | - |
| Extension (Nm) | 11.9 | 8.0 | - |
| Chest Accln (g for 3ms) | - | - | - |
| Compression (mm) | 26.02 | 24.41 | 20.58 |
| Viscous criterion (m/s) | 0.10 | 0.07 | 0.15 |
| Abdomen - Force (kN) | - | - | 0.630 |
| Pelvis - Force (kN) | - | - | 1.360 |
| Upper legs Force (kN) | | | |
| Left | 0.26 | 0.20 | |
| Right | 0.49 | 0.30 | |
| Knee displ (mm) | | | |
| Left | 0.60 | 0.80 | |
| Right | 0.20 | 0.00 | |
| Lower legs Force (kN) | | | |
| Left | 1.70 | 1.98 | |
| Right | 1.70 | 2.20 | |
| Index (Upper/Low) | | | |
| Left | 0.45 /0.43 | 0.24 /0.22 | |
| Right | 0.45 /0.37 | 0.33/0.3 | |

Bonus points (maximum 5)

Pole Test: 2 pts

Seat belt reminders: 2 (see table below for details)

Modifiers - deductions from offset test scores

| | |
|------------|----------------|
| Head | No deduction |
| Chest | No deduction |
| Upper leg | No deduction |
| Lower leg | No deduction |
| Foot score | Score 4 points |

Modifiers - deductions from side impact test scores

| | |
|-------|--------------|
| Chest | No deduction |
|-------|--------------|

Safety features

These specifications are subject to change. Please check with manufacturer for the latest specifications.



| | | | |
|---|-----|--|---------|
| Driver airbag | S | Antilock (ABS) brakes / Electronic brake distribution / Brake Assist | S/S/S |
| Passenger front airbag | S | Electronic stability control (ESC, VSC, DSC, ESP, VSA) | S# |
| Side airbags, front seats - chest protection | S | 3 point seat belt for all forward-facing seats | S |
| Side airbags, front seats - head protection | S | Whiplash protection (RCAR protocol) | Pending |
| Side airbags, rear seats - head protection | S | Intelligent seat belt reminder - driver | S |
| Driver knee airbag | X | Intelligent seat belt reminder - front passenger | S |
| Seat belt pretensioners (Front/Rear outboard) | S/X | Intelligent seat belt reminder - rear seats | X |

Key:

S = standard on all variants

O = optional on base variant. May be standard on higher variants

V= not available on base variant but standard or optional on higher variants

X = not available on any variant

ESC required by ANCAP for 5 star rating from 2008