

Crash Test Results

New Car Safety

VW GOLF CABRIOLET

From 2011 Front+side+head airbags



ANCAP
Rated ★★★★★

Occupant Protection

Occupant Protection Score 35.16 out of 37

Variant: 1.2 TSi

Eng: 1.2 PETROL

Kerb mass 1420 kg

Category: CAR - SPORTS

Vehicles built: 2011

Tested by Euro NCAP

Important note: The 1.2 petrol left-hand-drive European model was tested by Euro NCAP. Australasian specifications may vary and therefore models sold in Australasia might provide different levels of protection to those described on this page.

Model History and Safety Features

The tested model of Volkswagen Golf Cabriolet was introduced in Australia during 2011. The Australian model has a 1.4 litre petrol engine with comparable external dimensions to the 1.2 petrol engine tested by Euro NCAP.

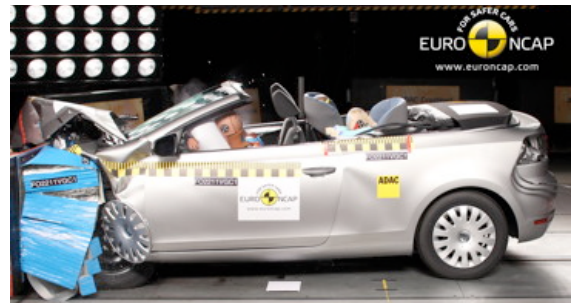
Dual front airbags and side airbags with chest and head protection are standard equipment. Antilock brakes (ABS), electronic brakeforce distribution (EBD) and electronic stability control (ESC) are also standard. Intelligent seat belt reminders are fitted to both front seats.

Pretensioners are fitted to the front seat belts to reduce slack in the event of a crash.

OCCUPANT PROTECTION: 5 Stars

The Golf Cabriolet scored 15.16 out of 16 in the offset crash test. The passenger compartment held its shape well. There was a slight risk of serious chest and leg injury for the driver.

The vehicle scored 16 out of 16 in the side impact crash test and a further two points in the pole test.



Offset crash test at 64km/h

FRONTAL OFFSET CRASH TEST

Body region scores out of 4 points each: Head/neck 4 pts, chest 3.87 pts, upper legs 4 pts, lower legs 3.29 pts.

The passenger compartment held its shape well in the offset crash test. The brake pedal moved rearwards by 45 mm and upwards 12 mm. The steering wheel hub moved 62mm forward, 20mm downward and 19 mm sideways. The front ("A") pillar moved 8 mm rearwards. All doors remained closed during the crash. After the crash the driver's door could be opened with moderate manual effort.

The airbag cushioned the head of the driver and contact was stable. The passenger's head was cushioned by the airbag. There were no knee hazards.

SIDE IMPACT CRASH TEST

Body region scores out of 4 points each: Head 4 pts, chest 4 pts, abdomen 4 pts, pelvis 4 pts.

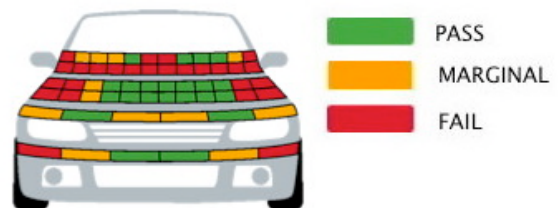
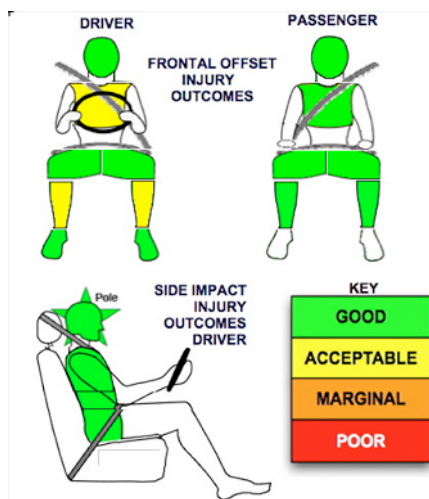
The vehicle was eligible for an optional pole impact test, since it had head-protecting side airbags. The vehicle earned the maximum two points in this test.

PEDESTRIAN PROTECTION: Acceptable

The bumper and front edge of the bonnet - the areas where a pedestrian's legs would contact - predominantly offered marginal or poor protection. In most areas likely to be struck by the head of a child, the protection was mostly good with some poor performing areas. In those areas likely to be struck by an adult's head, the bonnet offered only mostly poor protection.

PEDESTRIAN PROTECTION		
ACCEPTABLE	Child head impacts	7.9
	Adult head impacts	3.37
	Upper leg impacts	3.88
	Lower leg impacts	3.85
	Total (out of 36)	19

Tested by Euro NCAP v5.3



NOVEMBER 2011

PO Box 4041

Manuka ACT 2603

golf_cab11.doc

Issued 24/11/2011



ANCAP

Crash testing for safety

AUSTRALASIAN
NEW CAR ASSESSMENT
PROGRAM

www.ancap.com.au

TECHNICAL DATA - VW GOLF CABRIOLET - From 2011

INJURY MEASUREMENTS

Body region	Offset Crash Test at 64km/h (v5.1)		Side Impact Crash Test at 50km/h (v5.1)
	Driver	Passenger	Driver
Head HIC	327	300	61
Acceleration (g for 3ms)	47.1	43.3	31.7
Neck - Shear (kN)	0.28	0.12	-
Tension (kN)	1.26	0.69	-
Extension (Nm)	9.5	8.2	-
Chest Accln (g for 3ms)	-	-	-
Compression (mm)	22.91	19.08	19.64
Viscous criterion (m/s)	0.05	0.05	0.13
Abdomen - Force (kN)	-	-	0.580
Pelvis - Force (kN)	-	-	1.270
Upper legs Force (kN)			
Left	0.90	0.50	
Right	0.92	0.10	
Knee displ (mm)			
Left	1.60	0.70	
Right	1.70	0.10	
Lower legs Force (kN)			
Left	2.37	1.24	
Right	2.42	1.72	
Index (Upper/Low)			
Left	0.40 /0.27	0.25 /0.28	
Right	0.24 /0.56	0.33/0.17	

Bonus points (maximum 5)

Pole Test: 2 pts

Seat belt reminders: 2 (see table below for details)

Modifiers - deductions from offset test scores

Head	No deduction
Chest	No deduction
Upper leg	No deduction
Lower leg	No deduction
Foot score	Score 4 points

Modifiers - deductions from side impact test scores

Chest	No deduction
-------	--------------

Safety features

These specifications are subject to change. Please check with manufacturer for the latest specifications.



Driver airbag	S	Antilock (ABS) brakes / Electronic brake distribution / Brake Assist	S/S/S
Passenger front airbag	S	Electronic stability control (ESC, VSC, DSC, ESP, VSA)	S#
Side airbags, front seats - chest protection	S	3 point seat belt for all 4 forward-facing seats	S
Side airbags, front seats - head protection	S	Whiplash protection (RCAR protocol)	Pending
Side airbags, rear seats - head protection		Intelligent seat belt reminder - driver	S
Driver knee airbag	X	Intelligent seat belt reminder - front passenger	S
Seat belt pretensioners (Front/Rear outboard)	S/X	Intelligent seat belt reminder - rear seats	X

Key:

S = standard on all variants

O = optional on base variant. May be standard on higher variants

V= not available on base variant but standard or optional on higher variants

X = not available on any variant

ESC required by ANCAP for 5 star rating from 2008