

# Crash Test Results

## New Car Safety

### VW GOLF (LHD)

2009 on Front+side+head+knee airbags



Offset crash test at 64km/h

#### FRONTAL OFFSET CRASH TEST (v4.2)

Body region scores out of 4 points each: Head/neck 4 pts, chest 4 pts, upper legs 4 pts, lower legs 3.73 pts.

The passenger compartment held its shape well in the offset crash test. The brake pedal moved rearwards by 9 mm. The accelerator pedal moved downwards 6mm. The steering wheel hub moved 65mm forward, 22mm downward and 2 mm sideways. The front ("A") pillar moved 6 mm rearwards. All doors remained closed during the crash. After the crash all doors could be opened with normal effort.

The airbag cushioned the head of the driver and contact was stable. A knee airbag protected the driver's knees. The passenger's head was cushioned by the airbag.


#### SIDE IMPACT CRASH TEST (v4.2)

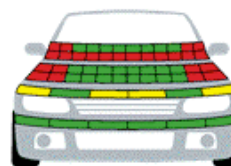
Body region scores out of 4 points each: Head 4 pts, chest 3.99 pts, abdomen 4 pts, pelvis 4 pts.

The vehicle was eligible for an optional pole impact test, since it had head-protecting side airbags. The manufacturer decided to go ahead with the pole test and the vehicle earned a further two points.

#### PEDESTRIAN PROTECTION: 3 Stars

The bumper scored maximum points and the front edge of the bonnet was rated as good in some areas. The protection offered by the bonnet to the head of a struck child was rated as predominantly good but that offered to an adult pedestrian was mostly poor.

PEDESTRIAN PROTECTION		
 <b>ANCAP</b> Rated ★ ★ ★ ★ Tested by Euro NCAP v4.2	Child head impacts	8
	Adult head impacts	4
	Upper leg impacts	3.88
	Lower leg impacts	6
	Total (out of 36)	21.88



■ GOOD  
■ ADEQUATE  
■ MARGINAL

Pedestrian protection



**Occupant Protection Score 35.72 out of 37**

Variant: 5 door hatch

Eng: 1.4

Kerb weight: 1190 kg

Category: SMALL CAR

Vehicles built: 2008

Tested by Euro NCAP

**Important note:** The *left-hand-drive* European model was tested by Euro NCAP. Australasian specifications may vary and therefore models sold in Australasia might provide different levels of protection to those described on this page.

#### Model History and Safety Features

The tested model of Golf VI was introduced in Australia and New Zealand during 2009. This 5-star rating also applies to the Golf GTi.

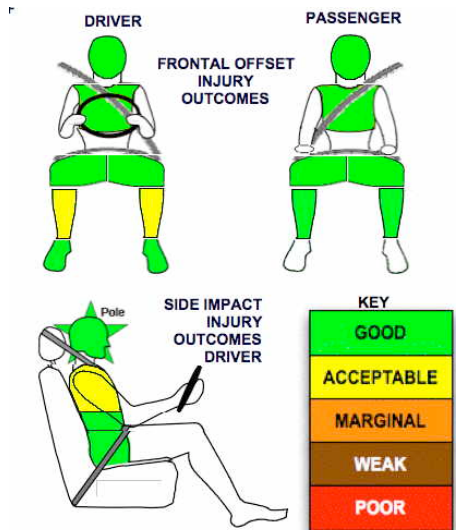
Dual front airbags, side airbags, head-protecting side curtains and a driver knee airbag are standard equipment. Antilock brakes (ABS), electronic brakeforce distribution (EBD), emergency brake assist and electronic stability control (ESC) are also standard. Intelligent seat belt reminders are fitted to both front seats.

The front seat belt buckles are mounted on the seats and the upper anchorages are adjustable. These features improve the fit of the seat belt. Pretensioners are fitted to the front seat belts to reduce slack in the event of a crash. A three point seat belt is fitted to the centre rear seat. This provides better protection than a two point (lap) seat belt.

#### OCCUPANT PROTECTION: 5 Stars

The Golf scored 15.73 out of 16 in the offset crash test. The passenger compartment held its shape well. There was a slight risk of serious leg injury for the driver.

The vehicle scored 15.99 out of 16 in the side impact crash test. There was a very slight risk of serious chest injury for the driver. A further two points were earned in the optional pole test.



March 2009

PO Box 4041

Manuka ACT 2603

golf09.doc

Revised 20/11/2009



**ANCAP**

Crash testing for safety

AUSTRALASIAN  
NEW CAR ASSESSMENT  
PROGRAM

# TECHNICAL DATA - VW GOLF - 2009 on

## INJURY MEASUREMENTS

Body region	Offset Crash Test at 64km/h (v4.2)		Side Impact Crash Test at 50km/h (v4.2)
	Driver	Passenger	Driver
<b>Head HIC</b>	410	418	73
Acceleration (g for 3ms)	48.5	53.1	27.4
<b>Neck - Shear (kN)</b>	0.33	0.39	-
Tension (kN)	1.29	0.08	-
Extension (Nm)	12.5	11.4	-
<b>Chest Accln (g for 3ms)</b>	-	-	-
Compression (mm)	18.41	20.32	22.05
Viscous criterion (m/s)	0.07	0.06	0.15
<b>Abdomen - Force (kN)</b>	-	-	0.570
<b>Pelvis - Force (kN)</b>	-	-	1.730
<b>Upper legs Force (kN)</b>			
Left	1.01	0.30	
Right	0.88	0.41	
<b>Knee displ (mm)</b>			
Left	2.30	0.00	
Right	1.60	0.10	
<b>Lower legs Force (kN)</b>			
Left	2.40	1.48	
Right	2.14	1.82	
<b>Index (Upper/Low)</b>			
Left	0.34 /0.41	0.30 /0.29	
Right	0.33 /0.22	0.37/0.17	

### Bonus points (maximum 5)

Pole Test: 2 pts

Seat belt reminders: 2 (see table below for details)

### Modifiers - deductions from offset test scores

Head	No deduction
Chest	No deduction
Upper leg	No deduction
Lower leg	No deduction
Foot score	Score 4 points

### Modifiers - deductions from side impact test scores

Chest	No deduction
-------	--------------

### Safety features

These specifications are subject to change. Please check with manufacturer for the latest specifications.



Driver airbag	S	Antilock (ABS) brakes / Electronic brake distribution / Brake Assist	S/S/S
Passenger front airbag	S	Electronic stability control (ESC, VSC, DSC, ESP, VSA)	S#
Side airbags, front seats - chest protection	S	3 point centre rear seat belt	S
Side airbags, front seats - head protection	S	Active head restraints - front seats	S
Side airbags, rear seats - head protection *	S	Intelligent seat belt reminder - driver	S
Driver knee airbag	S	Intelligent seat belt reminder - front passenger	S
Seat belt pretensioners (Front/Rear outboard)	S/X	Rear seat belt status indicator	X

Key: \* Side airbags with chest protection are optional in New Zealand but are not available in Australia.

S = standard on all variants

O = optional on base variant. May be standard on higher variants

V= not available on base variant but standard or optional on higher variants

X = not available on any variant

# ESC required by ANCAP for 5 star rating from 2008