

Crash Test Results

New Car Safety

VW EOS (LHD)

2007 on

Front+side+head airbags



Offset crash test at 64km/h

FRONTAL OFFSET CRASH TEST (v4.1)

Body region scores out of 4 points each: Head/neck 4 pts, chest 3.72 pts, upper legs 2 pts, lower legs 2.62 pts.

The passenger compartment held its shape well in the offset crash test. The brake pedal moved rearwards by 68 mm and upwards 57 mm. The steering wheel hub moved rearwards 10 mm, upwards 25 mm and sideways 54mm. The front ("A") pillar moved 2 mm rearwards. All doors remained closed during the crash. After the crash high manual effort was required to open the driver's door.

The airbag cushioned the head of the driver and contact was stable. Steering column components were a potential source of injury for the driver's knees. The passenger's head was cushioned by the airbag. All passenger injury values were good.

SIDE IMPACT CRASH TEST (v4.1)

Body region scores out of 4 points each: Head 4 pts, chest 4 pts, abdomen 4 pts, pelvis 4 pts.

The vehicle was eligible for an optional pole impact test, since it had head-protecting side airbags and scored four points for the head in the side impact test. The manufacturer decided to go ahead with the pole test. A door opened during the crash and so the vehicle earned 1 out of 2 available points.

PEDESTRIAN PROTECTION RATING (v4.1)

Occupant Protection Score 31.35 out of 37

Variant: Ambiente Eng: 1.6 litre
Kerb weight: 1470 kg Category: SPORTS
Vehicles built: 2006

Important note: The *left-hand-drive* European model was tested by Euro NCAP. Australasian specifications may vary and therefore models sold in Australasia might provide different levels of protection to those described on this page.

Model History and Safety Features

The tested model of Volkswagen Eos was introduced in Australia during 2007.

Dual front airbags, side airbags with chest and head protection are standard equipment. Antilock brakes (ABS), electronic brake distribution (EBD) and electronic stability control (ESC) are also standard. Intelligent seat belt reminders are fitted to both front seats.

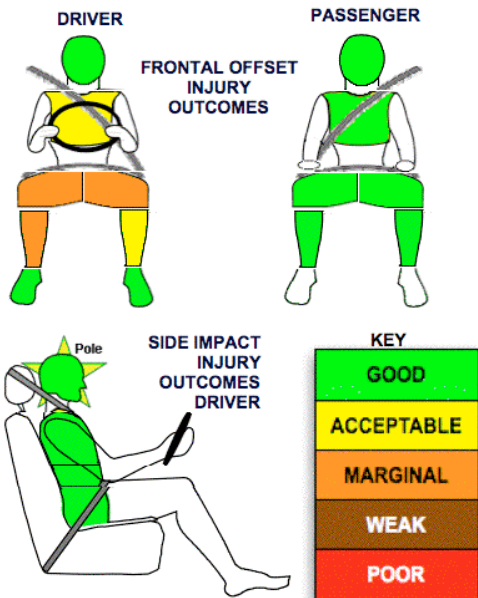
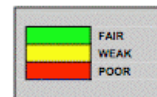
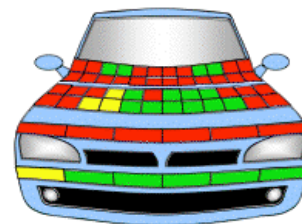
The front seat belt buckles are mounted on the seats and the upper anchorages are adjustable. These features improve the fit of the seat belt. Pre-tensioners are fitted to the front seat belts to reduce slack in the event of a crash.

OCCUPANT PROTECTION: 4.000 Stars

The VW Eos scored 12.35 out of 16 in the offset crash test. The passenger compartment held its shape well. Protection from serious leg injury was marginal for the driver.

The vehicle scored 16 out of 16 in the side impact crash test and a further two points in the optional pole test.

	Child head impacts	5.93
	Adult head impacts	2
	Upper leg impacts	Zero
	Lower leg impacts	5.41
	Total (out of 36)	13.34



June 2007

PO Box 1555
Canberra ACT
Australia 2601
eos07.doc
Issued 6/6/07



ANCAP

Crash testing for safety
AUSTRALASIAN
NEW CAR ASSESSMENT
PROGRAM

www.ancap.com.au

TECHNICAL DATA - VW EOS (LHD) - 2007 on

INJURY MEASUREMENTS

Body region	Offset Crash Test at 64km/h (v4.1)		Side Impact Crash Test at 50km/h (v4.1)
	Driver	Passenger	Driver
Head HIC	270	313	57
Acceleration (g for 3ms)	38.4	44.2	31.6
Neck - Shear (kN)	0.24	0.61	-
Tension (kN)	1.00	0.68	-
Extension (Nm)	21.1	14.1	-
Chest Accln (g for 3ms)	-	-	-
Compression (mm)	23.93	21.98	13.43
Viscous criterion (m/s)	0.09	0.06	0.05
Abdomen - Force (kN)	-	-	0.470
Pelvis - Force (kN)	-	-	1.280
Upper legs Force			
Left (kN)	0.34	0.49	
Right (kN)	0.34	0.45	
Knee displ (mm)			
Left	0.00	0.40	
Right	0.00	0.00	
Lower legs Force			
Left (kN)	2.84	1.72	
Right (kN)	3.35	1.98	
Index (Upper/Low)			
Left	0.56 /0.58	0.23 /0.23	
Right	0.71 /0.49	0.35/0.18	

Bonus points (maximum 5)

Pole Test: 1 pts

Seat belt reminders: 2 (see table below for details)

Modifiers - deductions from offset test scores

Head	No deduction
Chest	No deduction
Upper leg Variable & conc. loading	2 pt deduction Left & Right
Lower leg	No deduction
Foot score	Score 4 points

Modifiers - deductions from side impact test scores

Chest	No deduction
Pole test Door opened	1 pt deduction

Safety features

These specifications are subject to change. Please check with manufacturer for the latest specifications.



Driver airbag	S	Antilock (ABS) brakes / Electronic brake distribution	S/S
Passenger front airbag	S	Electronic stability control (ESC, VSC, DSC, ESP, VSA)	S
Side airbags, front seats - chest protection	S	3 point centre rear seat belt	S
Side airbags, front seats - head protection	S	Active head restraints - front seats	X
Side airbags, rear seats - head protection	X	Intelligent seat belt reminder - driver	S*
Driver knee airbag	X	Intelligent seat belt reminder - front passenger	S*
Front seat belt pretensioners	S	Rear seat belt status indicator	X

* Initial stocks had the seat belt reminders disabled but these are being rectified during normal service.

Key:

S = standard on all variants

O = optional on base variant. May be standard on higher variants

V= not available on base variant but standard or optional on higher variants

X = not available on any variant