

Crash Test Results

New Car Safety

VW AMAROK (4WD)

From 2011 Dual front airbags*



ANCAP

Rated ★★★★★

Occupant Protection

Occupant Protection Score 30.99 out of 37

* applies to some New Zealand variants - see below

Tested variant: 4WD Dual Cab Eng: 2 litre diesel

Kerb mass 1990 kg Category: UTILITY

Vehicles built: 2010 Tested by Euro NCAP

Important note: The *diesel left-hand-drive* European model was tested by Euro NCAP. Australasian specifications may vary and therefore models sold in Australasia might provide different levels of protection to those described on this page.

Model History and Safety Features

The tested model of Volkswagen Amarok was introduced in Australia and New Zealand during 2011. This 4-star rating applies to the New Zealand 4WD variant without head-protecting side airbags.

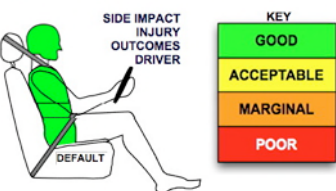
Dual front airbags are standard. Side airbags with chest and head protection are also standard except for the base model in New Zealand, where they are optional (see separate ANCAP 5-star rating for variants with side airbags). Antilock brakes (ABS), electronic brakeforce distribution (EBD) and electronic stability control (ESC) are also standard. An intelligent seat belt reminder is fitted to the driver seat.

Pretensioners are fitted to the front seat belts to reduce slack in the event of a crash. A three point seat belt is fitted to the centre rear seat. This provides better protection than a two point (lap) seat belt.

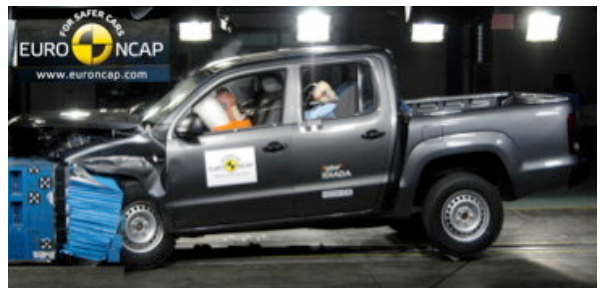
OCCUPANT PROTECTION: 4 Stars

The Amarok scored 13.99 out of 16 in the offset crash test. The passenger compartment held its shape well. Protection from serious chest injury was marginal for the driver.

The vehicle was awarded a default score of 16 out of 16 in the side impact crash test.



Whiplash Protection



Offset crash test at 64km/h

FRONTAL OFFSET CRASH TEST

Body region scores out of 4 points each: Head/neck 4 pts, chest 2.12 pts, upper legs 4 pts, lower legs 3.87 pts.

The passenger compartment held its shape well in the offset crash test. The accelerator pedal moved rearwards by 44 mm and downwards 19mm. The steering wheel hub moved 56mm forward, 11mm downward and 3 mm sideways. The front ("A") pillar moved 15 mm rearwards. All doors remained closed during the crash.

The airbag cushioned the head of the driver and contact was stable. There were no knee hazards. The passenger's head was cushioned by the airbag.

SIDE IMPACT CRASH TEST

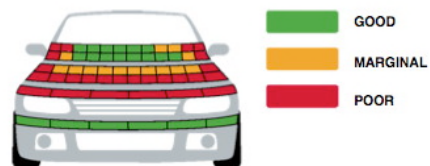
Body region scores out of 4 points each: Head 4 pts, chest 4 pts, abdomen 4 pts, pelvis 4 pts.

The side impact test simulates a small car striking the driver's door of the vehicle under test. It is based on a regulation test but the regulation does not apply to vehicles with a high seat height like the Amarok. Experience shows that such vehicles can be expected to perform well in this test so ANCAP has decided to award a full score for these vehicles instead of conducting a crash test. Euro NCAP tested an Amarok equipped with side airbags and it scored full marks.

PEDESTRIAN PROTECTION: Marginal

The bumper offered good protection to pedestrians' legs and scored full points but the front edge of the bonnet offered poor protection. The bonnet was predominantly good in those areas likely to be struck by an adult's head but was poor in most areas where a child's head might strike.

PEDESTRIAN PROTECTION		
MARGINAL Tested by Euro NCAP v5	Child head impacts	2.61
	Adult head impacts	8.36
	Upper leg impacts	Zero
	Lower leg impacts	6
	Total (out of 36)	16.96



FEBRUARY 2011

PO Box 4041

Manuka ACT 2603

amarok11.doc

Revised 4/4/2011



ANCAP

Crash testing for safety

AUSTRALASIAN
NEW CAR ASSESSMENT
PROGRAM

TECHNICAL DATA - VW AMAROK (NZ) - From 2011

INJURY MEASUREMENTS

Body region	Offset Crash Test at 64km/h (v5.1)		Side Impact Crash Test at 50km/h
	Driver	Passenger	Default score awarded
Head HIC	672	652	
Acceleration (g for 3ms)	69.5	63.7	
Neck - Shear (kN)	0.33	0.27	
Tension (kN)	1.50	1.06	
Extension (Nm)	9.9	17.8	
Chest Accln (g for 3ms)	-	-	
Compression (mm)	35.15	25.33	
Viscous criterion (m/s)	0.14	0.09	
Abdomen - Force (kN)	-	-	
Pelvis - Force (kN)	-	-	
Upper legs Force (kN)			
Left	0.69	1.80	
Right	0.48	0.30	
Knee displ (mm)			
Left	2.50	0.50	
Right	4.00	0.40	
Lower legs Force (kN)			
Left	1.86	1.71	
Right	1.96	1.45	
Index (Upper/Low)			
Left	0.30 /0.19	0.38 /0.20	
Right	0.40 /0.43	0.32/0.16	

Bonus points (maximum 5)

Pole Test: Not eligible

Seat belt reminders: 1 (see table below for details)

Modifiers - deductions from offset test scores

Head	No deduction
Chest	No deduction
Upper leg	No deduction
Lower leg	No deduction
Foot score	Score 4 points

Modifiers - deductions from side impact test scores

Default score

Safety features

These specifications are subject to change. Please check with manufacturer for the latest specifications.



Driver airbag	S	Antilock (ABS) brakes / Electronic brake distribution / Brake Assist	S/S/X
Passenger front airbag	S	Electronic stability control (ESC, VSC, DSC, ESP, VSA)	S#
Side airbags, front seats - chest protection	S (O NZ)	3 point centre rear seat belt	S
Side airbags, front seats - head protection	S (O NZ)	Whiplash protection (RCAR protocol)	Good
Side airbags, rear seats - head protection	X	Intelligent seat belt reminder - driver	S
Driver knee airbag	X	Intelligent seat belt reminder - front passenger	X
Seat belt pretensioners (Front/Rear outboard)	S/X	Intelligent seat belt reminder - rear seats	X

Key:

S = standard on all variants

O = optional on base variant. May be standard on higher variants

V= not available on base variant but standard or optional on higher variants

X = not available on any variant

ESC required by ANCAP for 5 star rating from 2008