

# Crash Test Results

## New Car Safety

### TOYOTA YARIS HATCH

From Dec 2011 Front+side+head+knee airbags



**ANCAP**

Rated ★★★★★

**Occupant Protection**

**Occupant Protection Score** 34.41 out of 37

Variant: 5-door hatch

Eng: 1.3 litre

Kerb mass 1040 kg

Category: CAR - LIGHT

Vehicles built: 2011

Tested by Euro NCAP

**Important note:** The 1.3 left-hand-drive European 5-door hatch was tested by Euro NCAP. ANCAP was provided with technical information which showed that all Australasian hatch variants, including the 3-door hatch, achieve a 5-star rating.

#### Model History and Safety Features

The tested model of Yaris hatch was introduced in Australia and New Zealand late in 2011. This rating does not apply to the Yaris sedan.

Dual front airbags, side airbags, head-protecting side curtains and a driver knee airbag are standard equipment. Antilock brakes (ABS), electronic brakeforce distribution (EBD), emergency brake assist (EBA) and electronic stability control (ESC) are also standard. Intelligent seat belt reminders are fitted to both front seats.

Pretensioners are fitted to the front seat belts to reduce slack in the event of a crash.

#### OCCUPANT PROTECTION: 5 Stars

The Toyota Yaris scored 15.41 out of 16 in the offset crash test. The passenger compartment held its shape well. Injury measurements were good, except for a slight risk of serious chest injury for the passenger.

The vehicle scored 16 out of 16 in the side impact crash test and a further point in the pole test.



Offset crash test at 64km/h

#### FRONTAL OFFSET CRASH TEST

Body region scores out of 4 points each: Head/neck 4 pts, chest 3.41 pts, upper legs 4 pts, lower legs 4 pts.

The passenger compartment held its shape well in the offset crash test. The clutch pedal moved rearwards by 85 mm and upwards 16 mm. The steering wheel hub moved 7mm forward, 6mm downward and 6 mm sideways. The front ("A") pillar moved 25 mm rearwards. All doors remained closed during the crash.

The airbag cushioned the head of the driver and contact was stable. There were no knee hazards. The passenger's head was cushioned by the airbag.

#### SIDE IMPACT CRASH TEST

Body region scores out of 4 points each: Head 4 pts, chest 4 pts, abdomen 4 pts, pelvis 4 pts.

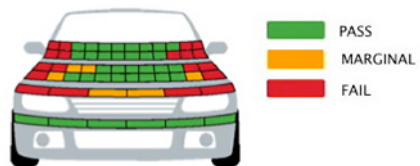
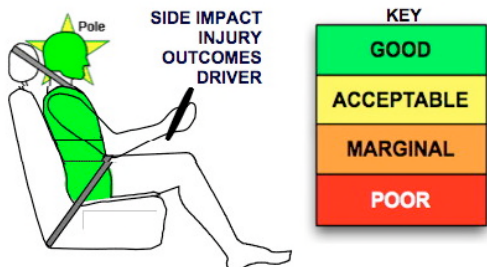
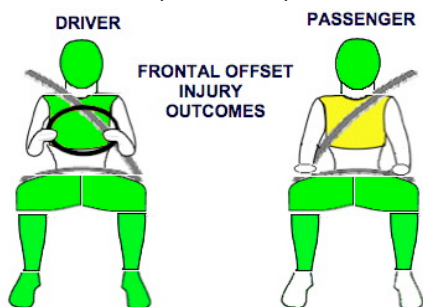
The vehicle was eligible for a pole impact test, since it had head-protecting side airbags. The vehicle earned one point out of two because the curtain airbag became slightly trapped behind the trim of the a-pillar.

#### PEDESTRIAN PROTECTION: Acceptable

The bumper scored maximum points for protection of dummies' legs. The front edge of the bonnet was predominantly poor. In those areas likely to be struck by a child's head, the bonnet offered predominantly good protection, as it did for an adult's head.

PEDESTRIAN PROTECTION	Child head impacts	7.81
<b>ACCEPTABLE</b>	Adult head impacts	7.50
	Upper leg impacts	0.12
	Lower leg impacts	6
	Total (out of 36)	21.43

Tested by Euro NCAP v5.3



DECEMBER 2011

PO Box 4041

Manuka ACT 2603

yaris12.doc

Issued 19/12/2011



**ANCAP**

Crash testing for safety

AUSTRALASIAN  
NEW CAR ASSESSMENT  
PROGRAM

# TECHNICAL DATA - TOYOTA YARIS HATCH - From Dec 2011

## INJURY MEASUREMENTS

Body region	Offset Crash Test at 64km/h (v5.1)		Side Impact Crash Test at 50km/h (v5.1)
	Driver	Passenger	Driver
<b>Head</b> HIC	320	295	81
Acceleration (g for 3ms)	42.1	43.9	31.1
<b>Neck</b> - Shear (kN)	0.44	0.69	-
Tension (kN)	1.28	1.13	-
Extension (Nm)	16.3	19.7	-
<b>Chest</b> Accln (g for 3ms)	-	-	-
Compression (mm)	20.23	26.14	19.24
Viscous criterion (m/s)	0.06	0.09	0.13
<b>Abdomen</b> - Force (kN)	-	-	1.000
<b>Pelvis</b> - Force (kN)	-	-	2.230
<b>Upper legs</b> Force (kN)			
Left	1.43	1.70	
Right	1.11	0.30	
Knee displ (mm)			
Left	1.10	4.10	
Right	1.20	0.00	
<b>Lower legs</b> Force (kN)			
Left	1.34	1.27	
Right	1.56	1.99	
Index (Upper/Low)			
Left	0.33 /0.14	0.23 /0.22	
Right	0.38 /0.25	0.19 /0.26	

### Bonus points (maximum 5)

Pole Test: 1 pt

Seat belt reminders: 2 (see table below for details)

### Modifiers - deductions from offset test scores

Head	No deduction
Chest	No deduction
Upper leg Variable & conc. loading	No deduction
Lower leg	No deduction
Foot score	Score 4 points

### Modifiers - deductions from side impact test scores

Chest	No deduction
Head (pole test) Incorrect airbag deployment	1pt deduction

### Safety features

These specifications are subject to change. Please check with manufacturer for the latest specifications.



Driver airbag	S	Antilock (ABS) brakes / Electronic brake distribution / Brake Assist	S/S/S
Passenger front airbag	S	Electronic stability control (ESC, VSC, DSC, ESP, VSA)	S#
Side airbags, front seats - chest protection	S	3 point seat belt for all forward-facing seats	S
Side airbags, front seats - head protection	S	Whiplash protection (RCAR protocol)	Pending
Side airbags, rear seats - head protection	S	Intelligent seat belt reminder - driver	S
Driver knee airbag	S	Intelligent seat belt reminder - front passenger	S
Seat belt pretensioners (Front/Rear outboard)	S/X	Intelligent seat belt reminder - rear seats	X @

Key: @ Rear seat belt reminder awarded 1 point by Euro NCAP. Not available in Australasia.

S = standard on all variants

O = optional on base variant. May be standard on higher variants

V= not available on base variant but standard or optional on higher variants

X = not available on any variant

# ESC required by ANCAP for 5 star rating from 2008