

Crash Test Results

New Car Safety

TOYOTA RAV4

2006 on

Dual front airbags



ANCAP

Rated ★★★★★

Occupant Protection

Occupant Protection Score 29.94 out of 37

Variant: CV

Eng: 2.4 litre auto

Kerb weight: 1620 kg

Category: 4WD - medium

Vehicle built: 2007

Model History and Safety Features

The tested model of Toyota RAV4 was introduced in Australia during 2006.

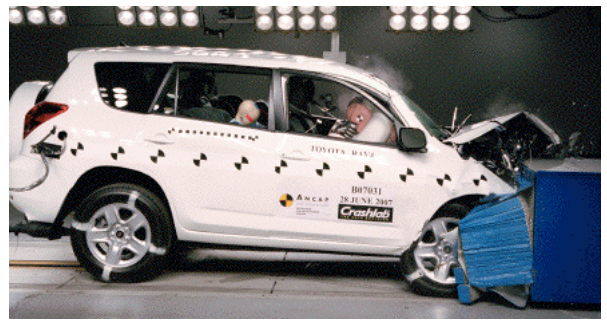
Dual front airbags and antilock brakes (ABS) with electronic brake distribution (EBD) are standard on the CV variant. Side airbags and head-protecting side curtains are optional on this variant and standard on the Cruiser variants, along with electronic stability control (ESC). Intelligent seat belt reminders are fitted to both front seats.

The front seat belt buckles are mounted on the seats and the upper anchorages are adjustable. These features improve the fit of the seat belt. Pre-tensioners are fitted to the front seat belts to reduce slack in the event of a crash. A three point seat belt is fitted to the centre rear seat. This provides better protection than a two point (lap) seat belt.

OCCUPANT PROTECTION: 4 Stars

The Toyota RAV4 scored 11.94 out of 16 in the offset crash test. The passenger compartment held its shape well. Protection from serious leg injury was weak for the driver.

The vehicle was awarded a default score of 16 out of 16 in the side impact crash test.



Offset crash test at 64km/h

FRONTAL OFFSET CRASH TEST (v4.1)

Body region scores out of 4 points each: Head/neck 4 pts, chest 3.37 pts, upper legs 1.14 pts, lower legs 3.42 pts.

The passenger compartment held its shape well in the offset crash test. The accelerator pedal moved rearwards by 47 mm and upwards 30 mm. The steering wheel hub moved forwards 36mm, downwards 26mm and sideways 20 mm. The front ("A") pillar moved 37 mm rearwards. All doors remained closed during the crash moderate effort was required to open the driver's door.

The airbag cushioned the head of the driver and contact was stable. Steering column components were a potential source of injury for the driver's knees. The passenger's head was cushioned by the airbag.

SIDE IMPACT CRASH TEST (v4.1)


Default 16 points awarded for side impact test.

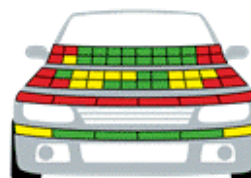
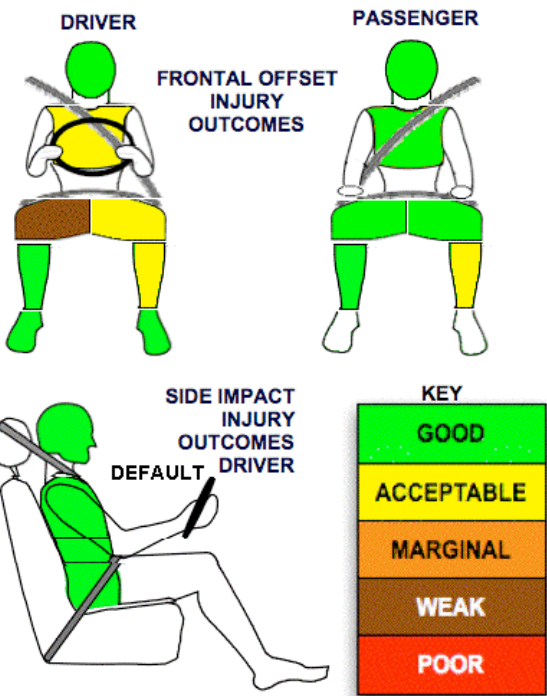
The side impact test normally used by ANCAP simulates a small car striking the driver's door of the vehicle under test. It is based on a regulation test but the regulation does not apply to vehicles with a high seat height like the RAV4. Experience shows that such vehicles can be expected to perform well in this test so ANCAP has decided to award full score for these vehicles instead of conducting a crash test.

The vehicle was not eligible for a Pole Impact Test since it did not have head-protecting side airbags. This test can earn eligible vehicles an extra two points.

PEDESTRIAN PROTECTION RATING (v4.1)

Tests conducted by Euro NCAP on the European RAV4.

PEDESTRIAN PROTECTION		
 Rated ★★★★★ Tested by Euro NCAP	Child head impacts	7.29
	Adult head impacts	8.47
	Upper leg impacts	Zero
	Lower leg impacts	5.67
	Total (out of 36)	21.43



GOOD
ADEQUATE
MARGINAL

August 2007

PO Box 1555
Canberra ACT
Australia 2601
RAV4_07.DOC
Issued 6/8/07



ANCAP

Crash testing for safety

AUSTRALASIAN
NEW CAR ASSESSMENT
PROGRAM

www.ancap.com.au

TECHNICAL DATA - TOYOTA RAV4 - 2006 on

INJURY MEASUREMENTS

Body region	Offset Crash Test at 64km/h (v4.1)		Side Impact Crash Test at 50km/h (v4.1)
	Driver	Passenger	Driver
Head HIC	381	288	Default Score awarded
Acceleration (g for 3ms)	49.0	46.4	
Neck - Shear (kN)	0.38	0.51	
Tension (kN)	1.89	0.59	
Extension (Nm)	21.2	24.9	
Chest Accln (g for 3ms)	45.00	36.80	
Compression (mm)	26.40	18.20	
Viscous criterion (m/s)	0.10	0.10	
Abdomen - Force (kN)	-	-	
Pelvis - Force (kN)	-	-	
Upper legs Force			
(kN) Left	3.25	1.34	
Right	4.93	3.05	
Knee displ (mm) Left	4.66	2.21	
Right	1.40	3.57	
Lower legs Force			
(kN) Left	2.07	2.21	
Right	1.18	1.83	
Index (Upper/Low) Left	0.23 /0.53	0.29 /0.45	
Right	0.27 /0.25	0.33/0.39	

Bonus points (maximum 5)

Pole Test: Not eligible due to a lack of head-protecting side airbags

Seat belt reminders: 2 (see table below for details)

Modifiers - deductions from offset test scores

Head No deduction

Chest No deduction

Upper leg Variable & conc. loading 2 pt deduction right

1 pt deduction left

Lower leg No deduction

Foot score Score 4 points

Note: Steering column and pedal movements are measured relative to the driver's seat.

Modifiers - deductions from side impact test scores

Default score awarded

Safety features

These specifications are subject to change. Please check with manufacturer for the latest specifications.



Driver airbag	S	Antilock (ABS) brakes / Electronic brake distribution	S/S
Passenger front airbag	S	Electronic stability control (ESC, VSC, DSC, ESP, VSA)	V
Side airbags, front seats - chest protection	O	3 point centre rear seat belt	S
Side airbags, front seats - head protection	O	Active head restraints - front seats	X
Side airbags, rear seats - head protection	O	Intelligent seat belt reminder - driver	S
Driver knee airbag	X	Intelligent seat belt reminder - front passenger	S
Front seat belt pretensioners	S	Rear seat belt status indicator	X

Key:

S = standard on all variants

O = optional on base variant. May be standard on higher variants

V= not available on base variant but standard or optional on higher variants

X = not available on any variant