

# ANCAP Safety Rating: TOYOTA PRIUS V (2012 onwards)



Frontal offset test at 64km/h

## This ANCAP safety rating applies to:

<b>Make / Model</b>	Toyota Prius V
<b>Year Range</b>	2012 onwards
<b>Variant(s)*</b>	all variants
<b>Vehicle Type</b>	People Mover

The Prius V was released in Australia and New Zealand in 2012.

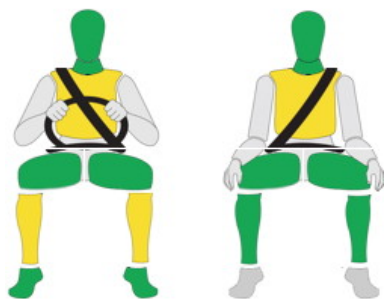
Dual frontal, side chest and side head airbags (curtains) and a driver knee airbag are standard. Electronic Brake Distribution (EBD), and Emergency Brake Assist (EBA) are also standard. Several advanced safety features are available on the i-Tech variant. Advanced seat belt reminders are fitted to all seats.

In the offset crash test driver and passenger chest protection was acceptable. In the side impact crash test driver chest protection was acceptable. Driver head protection in the side pole test was good.

## Injury Outcomes.

### Frontal Offset

Driver Passenger



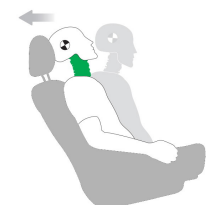
### Side Impact & Pole\*

Driver



### Whiplash Protection

Driver



\* Head protection only.

## Test Results Summary.

<b>Airbags</b>	Dual Frontal, Side, Head, Knee
<b>Frontal Offset Test</b>	15.21 (out of 16)
<b>Side Impact Test</b>	15.27 (out of 16)
<b>Pole Test</b>	2 (out of 2)
<b>Whiplash Protection</b>	Good
<b>Pedestrian Protection</b>	Good
<b>ESC</b>	Standard
<b>Seat Belt Reminders</b>	3.0 (out of 3)
<b>Overall Score</b>	35.48 (out of 37)
<b>ANCAP Safety Rating</b>	★★★★★
<b>Rating Year<sup>^</sup></b>	2015

## Occupant Protection.

### Frontal Offset Test

Each body region is scored out of 4 points

Head / neck:	4.00 points
Chest:	3.47 points
Upper legs:	4.00 points
Lower legs:	3.74 points

The passenger compartment held its shape well in the offset test. Pedal and steering wheel displacements were well controlled. Driver and passenger contact with the airbags was stable. All doors remained closed during the crash. After the crash all doors could be opened with normal effort.

### Side Impact Test

Each body region is scored out of 4 points

Head:	4.00 points
Chest:	3.27 points
Abdomen:	4.00 points
Pelvis:	4.00 points

Mostly good protection was provided for the driver in the side impact test. Chest protection was acceptable.

### Pole Test

Scored out of 2 points

Score:	2.00 points
--------	-------------

The vehicle was eligible for a side pole test because it has side curtain airbags. The vehicle scored the maximum 2 points for head protection in this test.

### Whiplash Protection Test

Whiplash protection is assessed to the RCAR Protocol

Geometric test:	Good
Dynamic test:	Good
Overall whiplash rating:	Good

Based on tests conducted by the Insurance Institute for Highway Safety and technical information provided by Toyota.

# ANCAP Safety Rating: TOYOTA PRIUS V (2012 onwards)



## Pedestrian Protection.

### Pedestrian Test

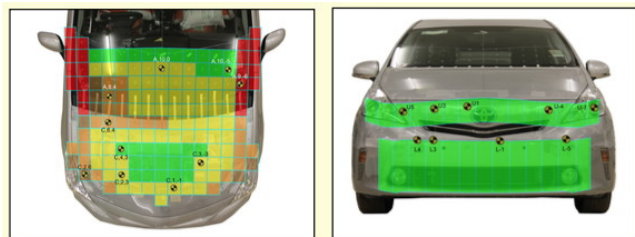
Scored out of 36 points

Adult & child head impacts: 15.65 points  
 Upper leg impacts: 6 points  
 Lower leg impacts: 6 points  
 Total: 27.65 out of 36 (Good)

Points have been gained in the central area of the bonnet and full points were gained for the bumper and bonnet leading edge areas. The majority of the bonnet and windscreen area provides some protection for child and adult pedestrians (v8).

#### Child and adult head impact

#### Adult leg impact (upper and full legforms)



Child and adult head impact

Adult leg impact (upper and full legforms)

pass

marginal

fail

## Score Deductions.

### Deductions from frontal offset test scores

Head / neck:  
 Chest: No deductions for offset test  
 Upper legs:  
 Lower legs:

### Deductions from side impact test score

Chest: Excessive backplate load: 0.73 points from chest score.

### Deductions from pole test score

Head: No deductions.

## Safety Features & Technologies.

Descriptions of each of these safety features and safety assist technologies (SAT) and detail on fitting requirements for each star rating level can be found at [ancap.com.au](http://ancap.com.au).

Safety Feature / Safety Assist Technology	Availability
Seat belts (three-point) for all forward-facing seats	<b>S</b>
Seat belt pretensioners (front)	<b>S</b>
Seat belt pretensioners (rear outboard)	<b>X</b>
Intelligent seat belt reminder (driver)	<b>S</b>
Intelligent seat belt reminder (front passenger)	<b>S</b>
Intelligent seat belt reminder (2 <sup>nd</sup> row seats)	<b>S</b>
Intelligent seat belt reminder (3 <sup>rd</sup> row seats)	<b>S</b>
Airbag - Front (driver)	<b>S</b>
Airbag - Front (passenger)	<b>S</b>
Airbag - Side, chest protection (front seats)	<b>S</b>
Airbag - Side, chest protection (2 <sup>nd</sup> row seats)	<b>X</b>
Airbag - Side, head protection (front seats)	<b>S</b>
Airbag - Side, head protection (2 <sup>nd</sup> row seats)	<b>S</b>
Airbag - Side, head protection (3 <sup>rd</sup> row seats)	<b>S</b>
Airbag - Knee (driver)	<b>S</b>
Airbag - Knee (front passenger)	<b>X</b>
Head restraints for all seats	<b>S</b>
Adaptive cruise control (ACC)	<b>V</b>
Antilock braking system (ABS)	<b>S</b>
Autonomous emergency braking (AEB)	<b>V</b>
Daytime running lights (DRL)	<b>S</b>
Electronic brakeforce distribution (EBD)	<b>S</b>
Electronic stability control (ESC)	<b>S</b>
Emergency brake assist (EBA)	<b>S</b>
Hill launch assist	<b>S</b>
Lane support system (LSS)	<b>X</b>
Reversing collision avoidance	<b>S</b>
Tyre pressure monitoring system (TPMS)	<b>X</b>

These specifications and are subject to change. Please check with the manufacturer for the latest specifications.

**S** = Standard on all variants.  
**O** = Optional on base variant. May be standard on higher variants.  
**V** = Not available on base variant but standard or optional on higher variants.  
**X** = Not available on any variant.  
**E** = Available in Europe / USA but not available on any Australasian variant.

# ANCAP Safety Rating: TOYOTA PRIUS V (2012 onwards)



## Injury Values & Measurements.

Body Region	Frontal offset test at 64 km/h (v5.1)		Side impact test at 50 km/h (v5.1)
	Driver	Passenger	Driver
<b>Head</b>			
HIC	273.00	256.00	37.00
Acceleration (g for 3ms)	45.10	39.90	20.30
<b>Neck</b>			
Shear (kN)	0.46	0.57	-
Tension (kN)	1.46	0.81	-
Extension (Nm)	22.30	14.50	-
<b>Chest</b>			
Acceleration (g for 3ms)	-	-	-
Compression (mm)	25.73	22.80	10.10
Viscous criterion (m/s)	0.09	0.11	0.04
<b>Abdomen</b>			
Force (kN)	-	-	0.62
<b>Pelvis</b>			
Force (kN)	-	-	2.06
<b>Upper legs</b>			
Femur force left (kN)	2.39	0.97	
Femur force right (kN)	2.20	1.92	
Knee displacement left (mm)	2.88	0.27	
Knee displacement right (mm)	2.21	0.06	
<b>Lower legs</b>			
Force left (kN)	2.13	1.70	
Force right (kN)	2.39	1.76	
Index (upper / lower) left	0.21 / 0.27	0.33 / 0.16	
Index (upper / lower) right	0.30 / 0.37	0.29 / 0.17	
<b>Intrusion Measurements*</b>			
<b>Steering column</b>			
Forward (mm)	46		
Downward (mm)	41		
Sideways (mm)	18		
<b>Pedals</b>			
Accelerator - rearward (mm)	34		
Accelerator - upward (mm)	13		
<b>A-Pillar</b>			
Rearward (mm)	4		

+ Steering column and pedal movements are measured relative to the driver's seat.

\* ANCAP safety ratings do not automatically extend to variants that have different body styles, engine configurations, driven wheels or occupant restraint systems (e.g. fewer airbags). In these cases, ANCAP considers technical evidence submitted by manufacturers before deciding on extending a rating to additional variants of a model. For further information about the application of ANCAP safety ratings to model variants, see the ANCAP Variant Policy.

^ The Rating Year denotes the year requirements against which a vehicle has been assessed. The Rating Year is determined by ANCAP and may be based on the year in which a new vehicle model is first launched into the Australian and/or New Zealand markets; the year in which the vehicle was tested (if tested by Euro NCAP); or, for vehicles which hold an existing ANCAP safety rating, the year in which the rating was updated (or earlier applicable year).

### Assessment Details.

<b>Tested Make / Model</b>	Toyota Prius V
<b>Tested Vehicle(s) Built</b>	2015
<b>Tested Body Type</b>	5 Dr Hatch
<b>Tested Vehicle Kerb Weight</b>	1420 kg
<b>Tested Vehicle Engine</b>	1.8 hybrid
<b>Tested By</b>	ANCAP
<b>Assessed By</b>	ANCAP
<b>Document Reference</b>	PRIUSV12
<b>Rating Published</b>	March 2015
<b>Created/revised</b>	6/3/2015

