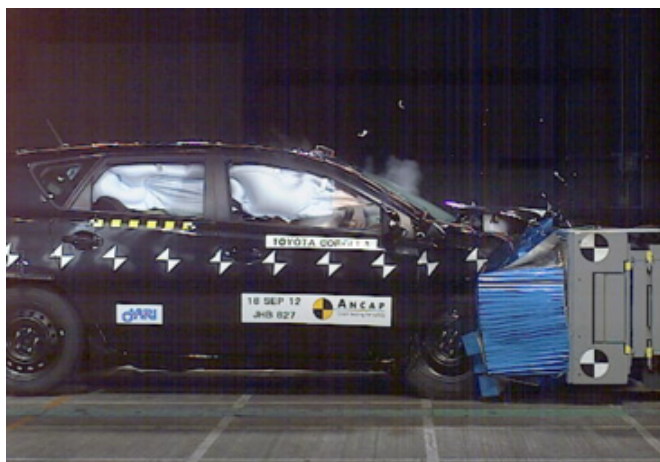


ANCAP Safety Rating TOYOTA COROLLA HATCH (Oct 2012 onwards)



Frontal offset test at 64km/h

This ANCAP safety rating applies to:

Make / Model	Toyota Corolla Hatch
Year Range	Oct 2012 onwards
Variant(s)*	All hatch variants, including the Hybrid
Vehicle Type	Small Car

The tested model of Toyota Corolla Hatch was introduced in Australia and New Zealand in October 2012. This ANCAP safety rating applies to all hatch variants, including the Hybrid variant that was introduced in 2016.

Dual frontal, side chest and side head airbags (curtains) and a driver knee airbag are standard. Advanced seat belt reminders are fitted to all seats. See page 2 for other safety features.

In the offset crash test driver chest and leg protection was acceptable. In this test passenger chest protection was also acceptable. In the side impact crash test driver protection was good. Head protection in the side pole test was good.

Injury Outcomes.

Frontal Offset



Side Impact & Pole*



Whiplash Protection



* Head protection only.

Test Results Summary.

Airbags	Dual Frontal, Side, Head, Knee
Frontal Offset Test	15.25 (out of 16)
Side Impact Test	15.00 (out of 16)
Pole Test	2 (out of 2)
Whiplash Protection	Acceptable
Pedestrian Protection	Acceptable
ESC	Standard
Seat Belt Reminders	3.0 (out of 3)
Overall Score	35.25 (out of 37)
ANCAP Safety Rating	★★★★★
Rating Year[^]	2014

Occupant Protection.

Frontal Offset Test

Each body region is scored out of 4 points

Head / neck:	4.00 points
Chest:	3.61 points
Upper legs:	4.00 points
Lower legs:	3.64 points

The passenger compartment held its shape well in the offset test. Pedal and steering wheel displacements were well controlled. Driver and passenger contact with the airbags was stable. All doors remained closed during the crash. After the crash all doors could be opened with normal effort.

Side Impact Test

Each body region is scored out of 4 points

Head:	4.00 points
Chest:	4.00 points
Abdomen:	4.00 points
Pelvis:	4.00 points

Driver protection was good but the driver-side rear door latch moved to the secondary latch position during the crash so 1 point was deducted from the test score.

Pole Test

Scored out of 2 points

Score:	2.00 points
--------	-------------

Good head protection was provided in the side pole test.

Whiplash Protection Test

Whiplash protection is assessed to the RCAR Protocol

Geometric test:	Good
Dynamic test:	Acceptable
Overall whiplash rating:	Acceptable

ANCAP Safety Rating TOYOTA COROLLA HATCH (Oct 2012 onwards)



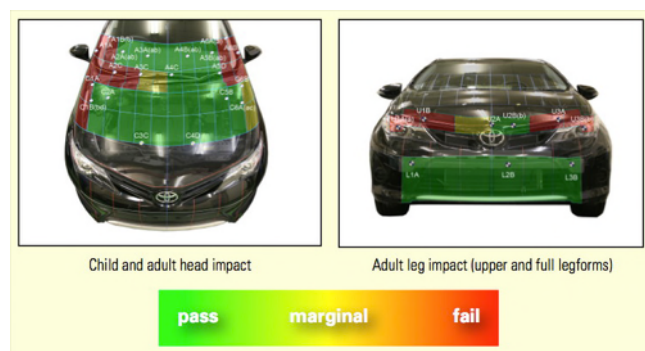
Pedestrian Protection.

Pedestrian Test

Scored out of 36 points

Adult & child head impacts: 17.09 points
Upper leg impacts: 1.48 points
Lower leg impacts: 6.00 points

This vehicle scored 24.57 out of 36 points (Acceptable). Most areas likely to be struck by the head of an adult or child pedestrian offered good protection. The bumper also provided good leg protection. The front and side edges of the bonnet had mixed protection. (v5.3)



Safety Features & Technologies.

Descriptions of each of these safety features and safety assist technologies (SAT) and detail on fitting requirements for each star rating level can be found at ancap.com.au.

Safety Feature / Safety Assist Technology	Availability
Seat belts (three-point) for all forward-facing seats	S
Seat belt pretensioners (front)	S
Seat belt pretensioners (rear outboard)	X
Intelligent seat belt reminder (driver)	S
Intelligent seat belt reminder (front passenger)	S
Intelligent seat belt reminder (2 nd row seats)	S
Airbag - Front (driver)	S
Airbag - Front (passenger)	S
Airbag - Side, chest protection (front seats)	S
Airbag - Side, chest protection (2 nd row seats)	X
Airbag - Side, head protection (front seats)	S
Airbag - Side, head protection (2 nd row seats)	S
Airbag - Knee (driver)	S
Airbag - Knee (front passenger)	X
Head restraints for all seats	S
Adaptive cruise control (ACC)	X
Adaptive front lighting systems	X
AEB (Autonomous emergency braking) - city	X
AEB - Interurban	X
AEB - Vulnerable road user	X
Antilock braking system (ABS)	S
Attention assist/fatigue reminder	X
Automatic headlights	V
Automatic high beam	V
Blind spot monitoring	X
Daytime running lights (DRL)	V
Electronic brakeforce distribution (EBD)	S
Electronic stability control (ESC)	S
Emergency brake assist (EBA)	S
Emergency stop signal	S
Hill launch assist	V
Lane support system (LSS)	X
Reversing collision avoidance	S
Speed assistance - automatic speed limiting (ISA)	X
Speed assistance - manual speed limiting	X
Speed assistance - speed sign recognition & warning	X
Tyre pressure monitoring system (TPMS)	X

S = Standard on all variants.

O = Optional on base variant. May be standard on higher variants.

V = Not available on base variant but standard or optional on higher variants.

X = Not available on any variant.

E = Available in Europe / USA but not available on any Australasian variant.

These specifications are subject to change. Please check with the manufacturer for the latest specifications.

Score Deductions.

Deductions from frontal offset test scores

Head / neck: No deductions
Chest: No deductions
Upper legs: No deductions
Lower legs: No deductions

Deductions from side impact test score

Overall: Door opened: 1 point from test score

Deductions from pole test score

Head: No deductions

ANCAP Safety Rating TOYOTA COROLLA HATCH (Oct 2012 onwards)



ANCAP

Safety ★★★★★



Injury Values & Measurements.

Body Region	Frontal offset test at 64 km/h (v5.1)		Side impact test at 50 km/h (v5.1)
	Driver	Passenger	Driver
Head			
HIC	293.00	271.00	51.00
Acceleration (g for 3ms)	40.30	39.70	22.70
Neck			
Shear (kN)	0.21	0.03	-
Tension (kN)	1.50	1.00	-
Extension (Nm)	8.40	29.40	-
Chest			
Acceleration (g for 3ms)	-	-	-
Compression (mm)	24.47	24.71	15.59
Viscous criterion (m/s)	0.12	0.07	0.08
Abdomen			
Force (kN)	-	-	0.75
Pelvis			
Force (kN)	-	-	2.04
Upper legs			
Femur force left (kN)	1.81	0.82	
Femur force right (kN)	1.70	1.87	
Knee displacement left (mm)	2.54	0.22	
Knee displacement right (mm)	0.80	3.54	
Lower legs			
Force left (kN)	2.23	1.87	
Force right (kN)	2.54	1.56	
Index (upper / lower) left	0.25 / 0.18	0.35 / 0.16	
Index (upper / lower) right	0.35 / 0.16	0.23 / 0.22	
Intrusion Measurements*			
Steering column			
Forward (mm)	43		
Downward (mm)	10		
Sideways (mm)	6		
Pedals			
Accelerator - rearward (mm)	42		
Brake - upward (mm)	9		
A-Pillar			
Rearward (mm)	21		

+ Steering column and pedal movements are measured relative to the driver's seat.

* **Model Variants:** ANCAP safety ratings do not automatically extend to variants that have different body styles, engine configurations, driven wheels or occupant restraint systems (e.g. fewer airbags). In these cases, ANCAP considers technical evidence submitted by manufacturers before deciding on extending a rating to additional variants of a model. For further information about the application of ANCAP safety ratings to model variants, see the ANCAP Variant Policy.

^ **Rating Year:** The Rating Year denotes the year requirements against which a vehicle has been assessed. The Rating Year is determined by ANCAP and may be based on the year in which a new vehicle model is first launched into the Australian and/or New Zealand markets; the year in which the vehicle was tested (if tested by Euro NCAP); or, for vehicles which hold an existing ANCAP safety rating, the year in which the rating was updated (or earlier applicable year).

Assessment Details.

Tested Make / Model	Toyota Corolla Hatch 5 door hatch
Tested Vehicle(s) Built	2012
Tested Body Type	Sedan
Tested Vehicle Kerb Weight	1270 kg
Tested Vehicle Engine	1.8 petrol
Tested By	ANCAP
Assessed By	ANCAP
Document Reference	COROLLA12
Document Created / Revised	2/5/2016
Rating Published	June 2016

