

Crash Test Results

New Car Safety

TOYOTA COROLLA ASCENT

2007 on

Dual front airbags



Offset crash test at 64km/h

FRONTAL OFFSET CRASH TEST (v4.1)

Body region scores out of 4 points each: Head/neck 4 pts, chest 3.31 pts, upper legs 2 pts, lower legs 2.70 pts.

The passenger compartment held its shape well in the offset crash test. The accelerator pedal moved rearwards by 55 mm and upwards 12 mm. The steering wheel hub moved 41mm forward, 33mm downward and 1 mm sideways. The front ("A") pillar moved 15 mm rearwards. All doors remained closed during the crash. After the crash the driver's door could be opened with high manual effort.

The airbag cushioned the head of the driver and contact was stable. Steering column components were a potential source of injury for the driver's knees. The passenger's head was cushioned by the airbag.


SIDE IMPACT CRASH TEST (v4.1)

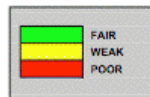
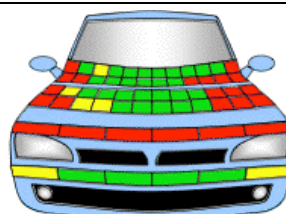
Body region scores out of 4 points each: Head 4 pts, chest 2.84 pts, abdomen 4 pts, pelvis 4 pts.

The New Zealand variants with standard side airbags can be expected to provide better protection than the tested vehicle, which had no side airbags.

The vehicle was not eligible for a Pole Impact Test since it did not have head-protecting side airbags. This test can earn eligible vehicles an extra two points. A separate ANCAP rating is available for a Corolla hatch with the full package of airbags.

PEDESTRIAN PROTECTION RATING (v4.1)

PEDESTRIAN PROTECTION	Child head impacts	6.92
 Tested by Euro NCAP	Adult head impacts	8
	Upper leg impacts	Zero
	Lower leg impacts	5.81
	Total (out of 36)	20.73




ANCAP
Occupant Protection
Rated ★★☆☆

Occupant Protection Score 28.85 out of 37

Variant: Ascent 5dr hatch

Eng: 1.8 litre manual

Kerb weight: 1260 kg

Category: SMALL CAR

Vehicles built: 07/07 and 8/07

Model History and Safety Features

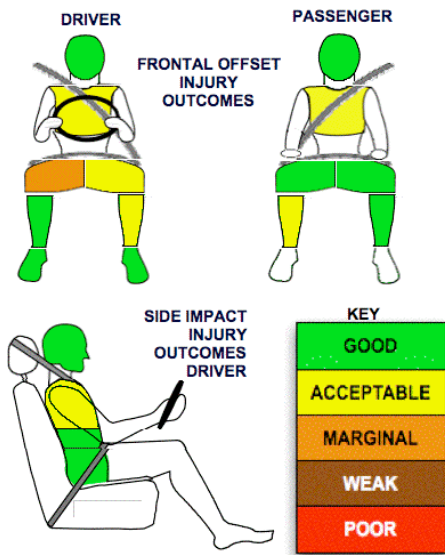
The tested model of Toyota Corolla Ascent was introduced in Australia during 2007.

Dual front airbags are standard equipment. Antilock brakes (ABS) with electronic brake distribution (EBD) are also standard. Side airbags, a driver knee airbag and head-protecting side curtains are optional on the Ascent and Levin SX variants and standard on the other variants in Australia. Side airbags are standard on all sedans and hatches in New Zealand but are not available for the wagon. Side curtains and knee airbags are standard on GLX sedans and hatches in New Zealand. Intelligent seat belt reminders are fitted to both front seats. Electronic stability control is not available.

The front seat belt buckles are mounted on the seats and the upper anchorages are adjustable. These features improve the fit of the seat belt. Pre-tensioners are fitted to the front seat belts to reduce slack in the event of a crash. A three point seat belt is fitted to the centre rear seat of sedans and hatches. This provides better protection than the two point (lap) seat belt fitted to the New Zealand wagon.

OCCUPANT PROTECTION: 4 Stars

The Corolla Ascent scored 12.01 out of 16 in the offset crash test. The passenger compartment held its shape well. Protection from serious leg injury was marginal for the driver and there was a slight risk of serious chest injury for the driver and passenger. The vehicle scored 14.84 out of 16 in the side impact crash test. There was a slight risk of serious chest injury for the driver.



January 2008

PO Box 1555

Canberra ACT Australia 2601

corolla07x.doc

Issued 14/1/08



ANCAP

Crash testing for safety

AUSTRALASIAN
NEW CAR ASSESSMENT
PROGRAM

TECHNICAL DATA - TOYOTA COROLLA ASCENT - 2007 on

INJURY MEASUREMENTS

Body region	Offset Crash Test at 64km/h (v4.1)		Side Impact Crash Test at 50km/h (v4.1)
	Driver	Passenger	Driver
Head HIC	212	257	61
Acceleration (g for 3ms)	35.7	41.6	40.2
Neck - Shear (kN)	0.36	0.56	-
Tension (kN)	1.25	1.16	-
Extension (Nm)	15.4	7.2	-
Chest Accln (g for 3ms)	37.400	35.800	-
Compression (mm)	26.00	26.81	27.8
Viscous criterion (m/s)	0.09	0.10	0.22
Abdomen - Force (kN)	-	-	0.767
Pelvis - Force (kN)	-	-	1.530
Upper legs Force (kN)			
Left	0.61	0.39	
Right	1.44	1.27	
Knee displ (mm)			
Left	1.18	0.33	
Right	0.04	1.12	
Lower legs Force (kN)			
Left	3.95	1.51	
Right	1.44	2.20	
Index (Upper/Low)			
Left	0.34 /0.50	0.24 /0.19	
Right	0.29 /0.18	0.32/0.31	

Bonus points (maximum 5)

Pole Test: Not eligible due to a lack of head-protecting side airbags

Seat belt reminders: 2 (see table below for details)

Modifiers - deductions from offset test scores

Head	No deduction
Chest	No deduction
Upper leg Variable & conc. loading	2 pt deduction right 1 pt deduction left
Lower leg	No deduction
Foot score	Score 4 points

Note: Steering column and pedal movements are measured relative to the driver's seat.

Modifiers - deductions from side impact test scores

Chest	No deduction
-------	--------------

Safety features

These specifications are subject to change. Please check with manufacturer for the latest specifications.

Driver airbag	S	Antilock (ABS) brakes / Electronic brake distribution	S/S
Passenger front airbag	S	Electronic stability control (ESC, VSC, DSC, ESP, VSA)	X
Side airbags, front seats - chest protection	O (V NZ)	3 point centre rear seat belt	S (V NZ)
Side airbags, front seats - head protection	O (V NZ)	Active head restraints - front seats	S
Side airbags, rear seats - head protection	O (V NZ)	Intelligent seat belt reminder - driver	S
Driver knee airbag	O (V NZ)	Intelligent seat belt reminder - front passenger	S
Front seat belt pretensioners	S	Rear seat belt status indicator	X

Key:

S = standard on all variants

O = optional on base variant. May be standard on higher variants

V= not available on base variant but standard or optional on higher variants

X = not available on any variant

