

Crash Test Results

New Car Safety

TOYOTA CAMRY HYBRID

From 2012 Front+side+head+knee airbags



Offset crash test at 64km/h (Camry)



ANCAP

Safety ★★★★★

Occupant Protection

Occupant Protection Score 36.27 out of 37

Variant: -

Eng: 2.5

Kerb mass: 1460 kg

Category: CAR - MEDIUM

Vehicles built: 2011

Model History and Safety Features

This model Toyota Camry Hybrid was introduced in Australia in 2012. This rating is based on ANCAP crash tests of the conventional Camry. Toyota provided technical evidence to ANCAP to show that the crash test results apply to the Camry Hybrid.

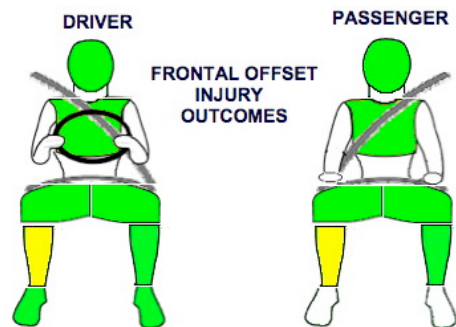
Dual front airbags, side airbags, head-protecting side curtains and knee airbags are standard equipment. Antilock brakes (ABS), electronic brake distribution (EBD) and electronic stability control (ESC) are also standard. Advanced seat belt reminders are fitted to all seats.

Pretensioners are fitted to the front seat belts to reduce slack in the event of a crash.

OCCUPANT PROTECTION: 5 Stars

The vehicle scored 15.27 out of 16 in the offset crash test. The passenger compartment held its shape well. There was a slight risk of serious leg injury for the driver and passenger.

The vehicle scored 16 out of 16 in the side impact crash test and a further two points in the optional pole test.



Whiplash Protection (RCAR Protocol)



PEDESTRIAN PROTECTION

MARGINAL

v5.3

Child head impacts	8
Adult head impacts	4
Upper leg impacts	Zero
Lower leg impacts	Zero
Total (out of 36)	12



Child and adult head impact



Adult leg impact (upper and full legforms)

pass marginal fail

MARCH 2012

PO Box 4041

Manuka ACT 2603

camryhyb12.doc Rated:2011

Revised 23/11/2012



ANCAP

Crash testing for safety

AUSTRALASIAN
NEW CAR ASSESSMENT
PROGRAM

www.ancap.com.au

TECHNICAL DATA - TOYOTA CAMRY HYBRID - From 2012

INJURY MEASUREMENTS

Body region	Offset Crash Test at 64km/h (v5.1)		Side Impact Crash Test at 50km/h (v5.1)
	Driver	Passenger	Driver
Head HIC	291	144	28
Acceleration (g for 3ms)	48.4	33.2	21.2
Neck - Shear (kN)	0.55	0.75	-
Tension (kN)	1.93	0.73	-
Extension (Nm)	37.0	27.1	-
Chest Accln (g for 3ms)	41.30	34.90	-
Compression (mm)	18.30	18.60	14.30
Viscous criterion (m/s)	0.07	0.06	0.04
Abdomen - Force (kN)	-	-	0.640
Pelvis - Force (kN)	-	-	1.750
Upper legs Force (kN)			
Left	1.33	0.81	
Right	1.43	1.81	
Knee displ (mm)			
Left	2.70	2.03	
Right	1.64	0.88	
Lower legs Force (kN)			
Left	1.96	1.76	
Right	2.20	3.10	
Index (Upper/Low)			
Left	0.24 /0.30	0.25 /0.24	
Right	0.26 /0.41	0.45/0.35	

Bonus points (maximum 5)

Pole Test: 2 pts

Seat belt reminders: 3 (see table below for details)

Modifiers - deductions from offset test scores

Head	No deduction
Chest	No deduction
Upper leg	No deduction
Lower leg	No deduction
Foot score	Score 4 points

Note: Steering column and pedal movements are measured relative to the driver's seat.

Modifiers - deductions from side impact test scores

Chest	No deduction
-------	--------------

Safety features

These specifications are subject to change. Please check with manufacturer for the latest specifications.



Driver airbag	S	Antilock (ABS) brakes / Electronic brake distribution / Brake Assist	S/S/S
Passenger front airbag	S	Electronic stability control (ESC, VSC, DSC, ESP, VSA)	S#
Side airbags, front seats - chest protection	S	3 point seat belt for all forward-facing seats	S
Side airbags, front seats - head protection	S	Whiplash rating (RCAR protocol)	Acceptable
Side airbags, rear seats - head protection	S	Intelligent seat belt reminder - driver	S
Driver knee airbag	S	Intelligent seat belt reminder - front passenger	S
Seat belt pretensioners (Front/rear outboard)	S/X	Intelligent seat belt reminder - rear seats	S

Key:

S = standard on all variants

O = optional on base variant. May be standard on higher variants

V= not available on base variant but standard or optional on higher variants

X = not available on any variant

ESC required by ANCAP for 5 star rating from 2008



ANCAP

Crash testing for safety

AUSTRALASIAN
NEW CAR ASSESSMENT
PROGRAM

www.ancap.com.au