

Crash Test Results

New Car Safety

TOYOTA CAMRY

From May 2011 Front+side+head airbags



ANCAP

Rated ★★★★★

Occupant Protection

Occupant Protection Score 33.13 out of 37

Variant: Ateva

Eng: 2.4 litre

Kerb mass: 1440 kg

Category: CAR - LARGE

Vehicles built: 2006 and 2011

Model History and Safety Features

The tested model of Toyota Camry was introduced in Australia during 2006. This 5-star ANCAP rating applies to all Camrys built from May 2011, when a passenger seat belt reminder and improved driver knee protection were introduced.

Dual front airbags, side airbags and head-protecting side curtains are standard equipment. Antilock brakes (ABS), electronic brake distribution (EBD) and electronic stability control (ESC) are also standard. Advanced seat belt reminders are fitted to both front seats.

Pretensioners are fitted to the front seat belts to reduce slack in the event of a crash. A three point seat belt is fitted to the centre rear seat. This provides better protection than a two point (lap) seat belt.

OCCUPANT PROTECTION: 5 Stars

The Toyota Camry scored 14.29 out of 16 in the offset crash test. The passenger compartment held its shape well. Protection from serious lower leg injury was marginal for the passenger.

The vehicle scored 14.84 out of 16 in the side impact crash test. There was a slight risk of serious chest injury for the driver. A further 2 points were scored in the pole test.



Offset crash test at 64km/h

FRONTAL OFFSET CRASH TEST

Body region scores out of 4 points each: Head/neck 4 pts, chest 3.83 pts, upper legs 4 pts, lower legs 2.46 pts.

The passenger compartment held its shape well in the offset crash test. The accelerator pedal moved rearwards by 68 mm and upwards 39 mm. The steering wheel hub moved forwards 23mm and upwards 47 mm. The front ("A") pillar moved 20 mm rearwards. All doors remained closed during the crash. After the crash all doors opened with normal effort.

The airbag cushioned the head of the driver and contact was stable. There were no knee hazards with the improved design of steering column. The passenger's head was cushioned by the airbag.

SIDE IMPACT CRASH TEST

Body region scores out of 4 points each: Head 4 pts, chest 2.84 pts, abdomen 4 pts, pelvis 4 pts.

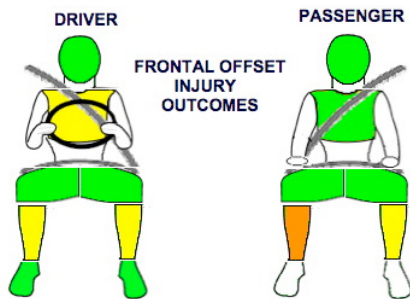
The maximum two points were awarded in the optional pole test, which was conducted with a Camry Hybrid. There was an instrumentation problem with this test but data from a previous pole test made up for the missing data.

PEDESTRIAN PROTECTION: Marginal*

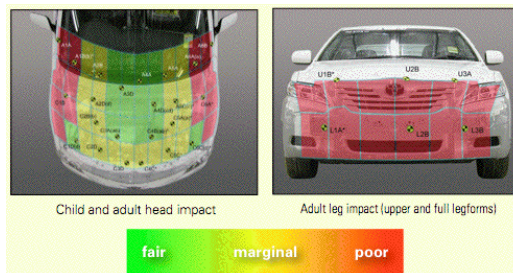
The Camry provided a fair to marginal level of protection for most of the adult and child head zones. However, the results for the leg tests were uniformly poor.

PEDESTRIAN PROTECTION	Child head impacts	8.21
MARGINAL	Adult head impacts	6.29
	Upper leg impacts	Zero
	Lower leg impacts	Zero
	Total (out of 36)	14.5

* Based on tests to a previous protocol. Scores might vary under the latest test protocol.



Whiplash Protection



MAY 2011

PO Box 4041

Manuka ACT 2603

camry11.doc

Issued 2/5/2011



ANCAP

Crash testing for safety

AUSTRALASIAN
NEW CAR ASSESSMENT
PROGRAM

TECHNICAL DATA - TOYOTA CAMRY - From May 2011

INJURY MEASUREMENTS

Body region	Offset Crash Test at 64km/h (v4.1)		Side Impact Crash Test at 50km/h (v4.1)
	Driver	Passenger	Driver
Head HIC	245	211	41
Acceleration (g for 3ms)	37.5	37.4	22.2
Neck - Shear (kN)	0.37	0.33	-
Tension (kN)	1.35	0.62	-
Extension (Nm)	24.8	30.1	-
Chest Accln (g for 3ms)	45.200	35.000	-
Compression (mm)	23.20	20.30	11.50
Viscous criterion (m/s)	0.09	0.11	0.06
Abdomen - Force (kN)	-	-	0.854
Pelvis - Force (kN)	-	-	2.690
Upper legs Force (kN)			
Left	1.25	0.44	
Right	0.34	2.72	
Knee displ (mm)			
Left	0.76	2.97	
Right	0.45	5.33	
Lower legs Force (kN)			
Left	1.35	2.48	
Right	1.67	4.31	
Index (Upper/Low)			
Left	0.41 /0.50	0.43 /0.19	
Right	0.41 /0.36	.44/.53	

Bonus points (maximum 5)

Pole Test: 2 pts

Seat belt reminders: 2 (see table below for details)

Modifiers - deductions from offset test scores

Head No deduction

Chest No deduction

Upper leg Variable & conc. loading No deduction

Lower leg No deduction

Foot score Score 4 points

Note: Steering column and pedal movements are measured relative to the driver's seat.

Modifiers - deductions from side impact test scores

Chest Backplate & spine loads 1.16 pt deduction

Safety features (2011)

These specifications are subject to change. Please check with manufacturer for the latest specifications.

Driver airbag	S	Antilock (ABS) brakes / Electronic brake distribution / Brake Assist	S/S/S*
Passenger front airbag	S	Electronic stability control (ESC, VSC, DSC, ESP, VSA)	S#
Side airbags, front seats - chest protection	S	3 point centre rear seat belt	S
Side airbags, front seats - head protection	S	Whiplash rating (RCAR protocol)	Marginal
Side airbags, rear seats - head protection	S	Intelligent seat belt reminder - driver	S
Driver knee airbag	X	Intelligent seat belt reminder - front passenger	S@
Seat belt pretensioners (Front/rear outboard)	S/X	Intelligent seat belt reminder - rear seats	X

Key: * Toyota's "Electronic Controlled Braking" provides similar functions to Brake Assist

@ Standard from May 2011 and needed for this 5-star ANCAP rating

S = standard on all variants

O = optional on base variant. May be standard on higher variants

V= not available on base variant but standard or optional on higher variants

X = not available on any variant

ESC required by ANCAP for 5 star rating from 2008

