

Crash Test Results

New Car Safety

TOYOTA CAMRY ATEVA

Aug 2006 on Front+side+head airbags*



Offset crash test at 64km/h

FRONTAL OFFSET CRASH TEST (v4.1)

Body region scores out of 4 points each: Head/neck 4 pts, chest 3.83 pts, upper legs 2 pts, lower legs 2.46 pts.

The passenger compartment held its shape well in the offset crash test. The accelerator pedal moved rearwards by 68 mm and upwards 39 mm. The steering wheel hub moved forwards 23mm and upwards 47 mm. The front ("A") pillar moved 20 mm rearwards. All doors remained closed during the crash. After the crash all doors opened with normal effort.


The airbag cushioned the head of the driver and contact was stable. Steering column components were a potential source of injury for the driver's knees. The passenger's head was cushioned by the airbag.

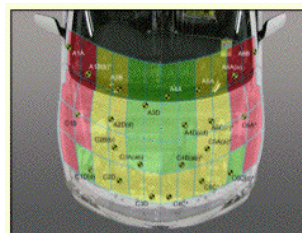
SIDE IMPACT CRASH TEST (v4.1)

Body region scores out of 4 points each: Head 4 pts, chest 2.84 pts, abdomen 4 pts, pelvis 4 pts.

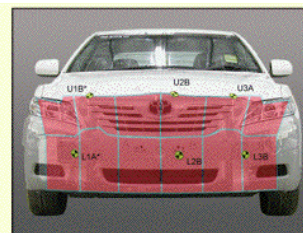
The vehicle was eligible for an optional pole test but the manufacturer decided not to go ahead with this test, which can earn a further two points.

PEDESTRIAN PROTECTION RATING (v4.1)

PEDESTRIAN PROTECTION		
 ANCAP Rated ★ ★ ★ ★	Child head impacts	8.21
	Adult head impacts	6.29
	Upper leg impacts	Zero
	Lower leg impacts	Zero
	Total (out of 36)	14.50



Child and adult head impact



Adult leg impact (upper and full legforms)

fair marginal poor

Occupant Protection Score 28.13 out of 37

* Safety equipment, as tested, not standard on all variants

Variant: Ateva auto

Eng: 2.4 litre

Kerb weight: 1440 kg

Category: LARGE CAR/MPV

Vehicles built: 10/06

Model History and Safety Features

The tested model of Toyota Camry was introduced in Australia during 2006.

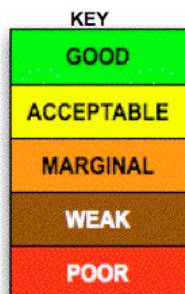
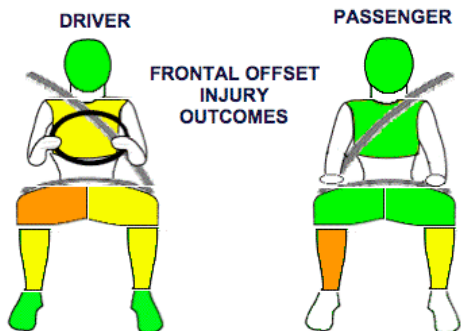
Dual front airbags are standard equipment. Antilock brakes (ABS) with electronic brake distribution (EBD) are also standard. Side airbags and head-protecting side curtains are optional on the Altise variant and standard on higher Australian and all New Zealand variants (see separate rating of Altise without curtains). Electronic stability control (ESC) is standard on all variants from late 2007. An intelligent seat belt reminder is fitted to the driver's seat.

The front seat belt buckles are mounted on the seats and the upper anchorages are adjustable. These features improve the fit of the seat belt. Pretensioners are fitted to the front seat belts to reduce slack in the event of a crash. A three point seat belt is fitted to the centre rear seat. This provides better protection than a two point (lap) seat belt.

OCCUPANT PROTECTION: 4 Stars

The Toyota Camry Ateva scored 12.29 out of 16 in the offset crash test. The passenger compartment held its shape well. Protection from serious leg injury was marginal for the driver and passenger.

The vehicle scored 14.84 out of 16 in the side impact crash test. There was a slight risk of serious chest injury for the driver.



November 2007

PO Box 1555
 Canberra ACT Australia
 2601
 camry06b.doc
 Issued 9/11/07



www.ancap.com.au

TECHNICAL DATA - TOYOTA CAMRY ATEVA - Aug 2006 on

INJURY MEASUREMENTS

Body region	Offset Crash Test at 64km/h (v4.1)		Side Impact Crash Test at 50km/h (v4.1)
	Driver	Passenger	Driver
Head HIC	245	211	41
Acceleration (g for 3ms)	37.5	37.4	22.2
Neck - Shear (kN)	0.37	0.33	-
Tension (kN)	1.35	0.62	-
Extension (Nm)	24.8	30.1	-
Chest Accln (g for 3ms)	45.200	35.000	-
Compression (mm)	23.20	20.30	11.50
Viscous criterion (m/s)	0.09	0.11	0.06
Abdomen - Force (kN)	-	-	0.854
Pelvis - Force (kN)	-	-	2.690
Upper legs Force			
Left (kN)	1.25	0.44	
Right (kN)	0.34	2.72	
Knee displ (mm)			
Left	0.76	2.97	
Right	0.45	5.33	
Lower legs Force			
Left (kN)	1.35	2.48	
Right (kN)	1.67	4.31	
Index (Upper/Low)			
Left	0.41 / 0.50	0.43 / 0.19	
Right	0.41 / 0.36	0.44 / 0.53	

Bonus points (maximum 5)

Pole Test: Eligible but not tested

Seat belt reminders: 1 (see table below for details)

Modifiers - deductions from offset test scores

Head No deduction
 Chest No deduction
 Upper leg Variable & conc. loading 2 pt deduction right
 1 pt deduction left
 Lower leg No deduction
 Foot score Score 4 points

Note: Steering column and pedal movements are measured relative to the driver's seat.



Modifiers - deductions from side impact test scores

Chest Spine and backplate loads 1.16 pt deduction

Safety features

These specifications are subject to change. Please check with manufacturer for the latest specifications.

Driver airbag	S	Antilock (ABS) brakes / Electronic brake distribution	S/S
Passenger front airbag	S	Electronic stability control (ESC, VSC, DSC, ESP, VSA)	S (late 07)
Side airbags, front seats - chest protection	O* √ (NZ S)	3 point centre rear seat belt	S
Side airbags, front seats - head protection	O* √ (NZ S)	Active head restraints - front seats	S
Side airbags, rear seats - head protection	O* √ (NZ S)	Intelligent seat belt reminder - driver	S
Driver knee airbag	X	Intelligent seat belt reminder - front passenger	X
Front seat belt pretensioners	S	Rear seat belt status indicator	X

* Side airbags and curtains are optional on Camry Altise. This assessment applies to the Camry Ateva which has side airbags and curtains standard.

Key: √ = Fitted to vehicle that was crash tested (where not standard)

S = standard on all variants

O = optional on base variant. May be standard on higher variants

V = not available on base variant but standard or optional on higher variants

X = not available on any variant