

# Crash Test Results

## New Car Safety

### TOYOTA AURION

From Apr 2012 Front+side+head+knee airbags



**ANCAP** Occupant Protection  
Rated ★★★★★

**Occupant Protection Score** 36.59 out of 37

Variant: AT-X

Eng: 3.5 V6

Kerb mass: 1530 kg

Category: CAR - LARGE

Vehicles built: 2012

#### Model History and Safety Features

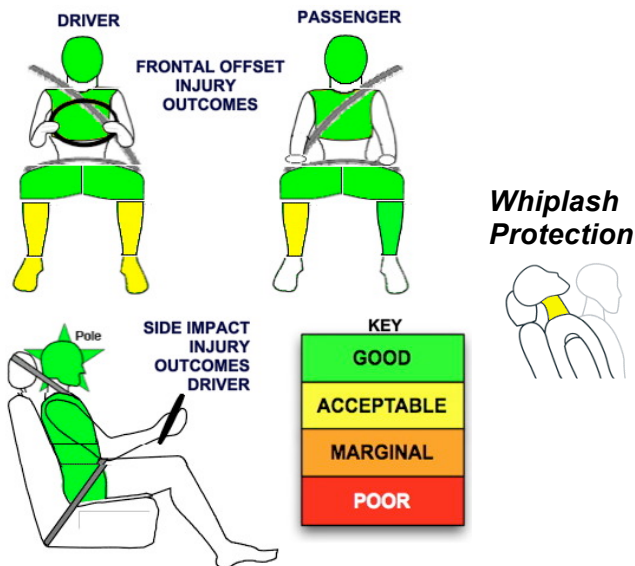
The tested model of Toyota Aurion was introduced in 2012 (April in Australia and March in New Zealand).

Dual front airbags, side airbags, head-protecting side curtains and driver knee airbag are standard equipment. Antilock brakes (ABS), electronic brake distribution (EBD), electronic stability control (ESC) and automatic headlights are also standard. Advanced seat belt reminders are fitted to all seats. Pretensioners are fitted to the front seat belts to reduce slack in the event of a crash.

#### OCCUPANT PROTECTION: 5 Stars

The Aurion scored 15.59 out of 16 in the offset crash test. The passenger compartment held its shape well. There was a slight risk of serious lower leg injury for the driver and passenger.

The vehicle scored 16 out of 16 in the side impact crash test and a further two points in the side pole test.



Offset crash test at 64km/h

#### FRONTAL OFFSET CRASH TEST

Body region scores out of 4 points each: Head/neck 4 pts, chest 4 pts, upper legs 4 pts, lower legs 3.59 pts.

The passenger compartment held its shape well in the offset crash test. The accelerator pedal moved rearwards by 82 mm. The brake pedal moved downwards 13mm. The steering wheel hub moved 4mm forward, 47 mm upward and 20 mm sideways. The front ("A") pillar moved 20 mm rearwards. All doors remained closed during the crash. After the crash the driver's door could be opened with high manual effort.

The airbag cushioned the head of the driver and contact was stable. There were no knee hazards. The passenger's head was cushioned by the airbag.

#### SIDE IMPACT CRASH TEST

Body region scores out of 4 points each: Head 4 pts, chest 4 pts, abdomen 4 pts, pelvis 4 pts.

The vehicle was eligible for a pole impact test, since it had head-protecting side airbags. The vehicle earned the maximum two points in this test.

#### PEDESTRIAN PROTECTION: Acceptable

The bonnet provided good protection in the child head impact area and the windscreen base provided a good result for much of the adult head area. The bumper scored marginal to poor results. Upper leg scores were poor.

PEDESTRIAN PROTECTION	Child head impacts	12
<b>ACCEPTABLE</b> v5.3	Adult head impacts	7
	Upper leg impacts	Zero
	Lower leg impacts	1.92
	Total (out of 36)	21.00



Child and adult head impact



Adult leg impact (upper and full legforms)

pass marginal fail

**APRIL 2012**

PO Box 4041

Manuka ACT 2603

aurion12.doc Rated: 2012

Issued 2/4/2012



**ANCAP**

Crash testing for safety

AUSTRALASIAN  
NEW CAR ASSESSMENT  
PROGRAM

# TECHNICAL DATA - TOYOTA AURION - From April 2012

## INJURY MEASUREMENTS

Body region	Offset Crash Test at 64km/h (v5.1)		Side Impact Crash Test at 50km/h (v5.1)
	Driver	Passenger	Driver
<b>Head HIC</b>	358	161	36
Acceleration (g for 3ms)	49.6	33.4	24.1
<b>Neck - Shear (kN)</b>	0.41	0.76	-
Tension (kN)	1.75	0.83	-
Extension (Nm)	28.3	27.6	-
<b>Chest Accln (g for 3ms)</b>	39.400	34.200	-
Compression (mm)	19.80	20.80	12.70
Viscous criterion (m/s)	0.09	0.08	0.03
<b>Abdomen - Force (kN)</b>	-	-	0.680
<b>Pelvis - Force (kN)</b>	-	-	1.870
<b>Upper legs Force (kN)</b>			
Left	1.68	0.83	
Right	1.82	2.45	
Knee displ (mm)			
Left	2.51	1.56	
Right	2.14	3.22	
<b>Lower legs Force (kN)</b>			
Left	2.61	1.80	
Right	2.03	2.09	
Index (Upper/Low)			
Left	0.21 /0.32	0.19 /0.27	
Right	0.28 /0.29	0.28/0.24	

### Bonus points (maximum 5)

Pole Test: 2 pts

Seat belt reminders: 3 pts (see table below for details)

### Modifiers - deductions from offset test scores

Head	No deduction
Chest	No deduction
Upper leg Variable & conc. loading	No deduction
Lower leg	No deduction
Foot score	Blocked brake pedal
	Score 3.95 points

Note: Steering column and pedal movements are measured relative to the driver's seat.

### Modifiers - deductions from side impact test scores

Chest	No deduction
-------	--------------

### Safety features

These specifications are subject to change. Please check with manufacturer for the latest specifications.

Driver airbag	S	Antilock (ABS) brakes / Electronic brake distribution / Brake Assist	S/S/S
Passenger front airbag	S	Electronic stability control (ESC, VSC, DSC, ESP, VSA)	S#
Side airbags, front seats - chest protection	S	3 point seat belt for all forward-facing seats	S
Side airbags, front seats - head protection	S	Whiplash rating (RCAR protocol)	Acceptable
Side airbags, rear seats - head protection	S	Intelligent seat belt reminder - driver	S
Driver knee airbag	S	Intelligent seat belt reminder - front passenger	S
Seat belt pretensioners (Front/rear outboard)	S/X	Intelligent seat belt reminder - rear seats	S

Key:

S = standard on all variants

O = optional on base variant. May be standard on higher variants

V= not available on base variant but standard or optional on higher variants

X = not available on any variant

# ESC required by ANCAP for 5 star rating from 2008

