

# ANCAP Safety Rating: TOYOTA LANDCRUISER (October 2015 - onwards)



**ANCAP**

Safety ★★★★★



Frontal offset test at 64km/h

## This ANCAP safety rating applies to:

<b>Make / Model</b>	Toyota LandCruiser 200 Series
<b>Year Range</b>	October 2015 - onwards
<b>Variant(s)*</b>	All LC200 variants
<b>Vehicle Type</b>	Large SUV

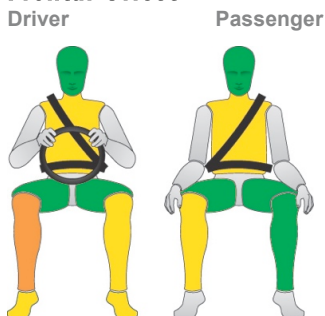
The 200 Series Toyota Landcruiser was introduced in Australia and New Zealand in 2007. This ANCAP safety rating applies to all variants built from August 2015. Separate ANCAP safety ratings apply to models prior to this

Dual frontal, side chest and side head airbags (curtains) are standard. Dual knee airbags became standard on all variants from 2013. Antilock brakes (ABS), electronic brake distribution (EBD) and electronic stability control (ESC) are also standard. Advanced seat belt reminders are fitted to both front seats.

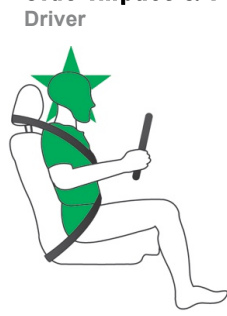
In the offset crash test driver chest protection was acceptable and leg protection was marginal. Passenger chest and leg protection was acceptable. Performance in the side pole test was good.

## Injury Outcomes.

### Frontal Offset



### Side Impact & Pole\*



### Whiplash Protection



	GOOD
	ACCEPTABLE
	MARGINAL
	POOR

\* Head protection only.

## Test Results Summary.

<b>Airbags</b>	Dual Frontal, Side, Head, Knee
<b>Frontal Offset Test</b>	13.09 (out of 16)
<b>Side Impact Test</b>	16.00 (out of 16)
<b>Pole Test</b>	2 (out of 2)
<b>Whiplash Protection</b>	Marginal
<b>Pedestrian Protection</b>	Marginal
<b>ESC</b>	Standard
<b>Seat Belt Reminders</b>	2.0 (out of 3)
<b>Overall Score</b>	33.09 (out of 37)
<b>ANCAP Safety Rating</b>	★★★★★
<b>Rating Year<sup>^</sup></b>	2011

## Occupant Protection.

### Frontal Offset Test

Each body region is scored out of 4 points

Head / neck:	4.00 points
Chest:	2.91 points
Upper legs:	4.00 points
Lower legs:	2.18 points

The passenger compartment held its shape well in the offset test. Pedal and steering wheel displacements were well controlled. Driver and passenger contact with the airbags was stable. All doors remained closed during the crash. After the crash all doors could be opened with normal effort.

### Side Impact Test

Each body region is scored out of 4 points

Head:	4.00 points
Chest:	4.00 points
Abdomen:	4.00 points
Pelvis:	4.00 points

The side impact test normally used by ANCAP simulates a small car striking the driver's door of the test vehicle. Experience shows that large vehicles like the Landcruiser can be expected to perform well in this test. ANCAP has adopted a policy of awarding these types of vehicles a default score of 16 points (out of 16).

### Pole Test

Scored out of 2 points

Score:	2.00 points
--------	-------------

The vehicle was eligible for a side pole test because it has side curtain airbags. The vehicle scored the maximum 2 points for head protection in this test.

### Whiplash Protection Test

Whiplash protection is assessed to the RCAR Protocol

Geometric test:	Good
Dynamic test:	Marginal
Overall whiplash rating:	Marginal

# ANCAP Safety Rating: TOYOTA LANDCRUISER (October 2015 - onwards)



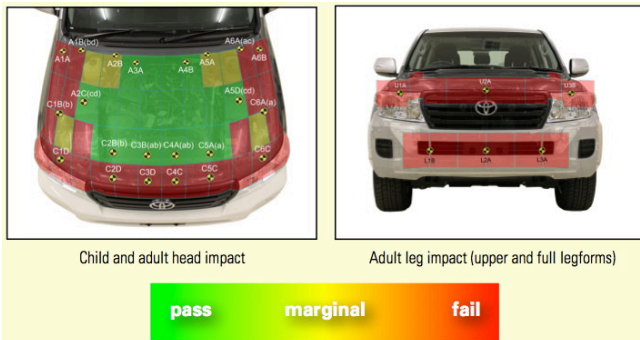
## Pedestrian Protection.

### Pedestrian Test

Scored out of 36 points

Adult & child head impacts: 11.61 points  
Upper leg impacts: 0.00 points  
Lower leg impacts: 0.00 points

The vehicle scored 11.61 out of 36 points (Marginal). Some points have been gained in the central area of the bonnet. The bumper and bonnet leading edge performed poorly for leg testing. (v5.3)



## Score Deductions.

### Deductions from frontal offset test scores

Head / neck: No deduction  
Chest: No deduction  
Upper legs: No deduction  
Lower legs: No deduction

### Deductions from side impact test score

No deductions (default score for high-seat vehicle).

### Deductions from pole test score

Head: No deductions.

## Other.

Independent assessment has shown that the 2011 ANCAP Safety Rating of this vehicle only, is retained when the following Toyota Genuine Accessories are equipped:

- LC200 Steel Bullbar Part No.:
- o High Grade - PZQ2960645
  - o Low Grade - PZQ2960640

- LC200 Alloy Bullbar Part No.:
- o High Grade - PZQ2960655
  - o Low Grade - PZQ2960650

The fitting of rigid metal bullbars may increase the serious injury risk for struck pedestrians, compared to vehicles without the bullbar fitted.

## Safety Features & Technologies.

Descriptions of each of these safety features and safety assist technologies (SAT) and detail on fitting requirements for each star rating level can be found at [ancap.com.au](http://ancap.com.au).

Safety Feature / Safety Assist Technology	Availability
Seat belts (three-point) for all forward-facing seats	<b>S</b>
Seat belt pretensioners (front)	<b>S</b>
Seat belt pretensioners (rear outboard)	<b>S</b>
Intelligent seat belt reminder (driver)	<b>S</b>
Intelligent seat belt reminder (front passenger)	<b>S</b>
Intelligent seat belt reminder (rear seats)	<b>X</b>
Airbag - Front (driver)	<b>S</b>
Airbag - Front (passenger)	<b>S</b>
Airbag - Side, chest protection (front seats)	<b>S</b>
Airbag - Side, chest protection (2 <sup>nd</sup> row seats)	<b>V</b>
Airbag - Side, head protection (front seats)	<b>S</b>
Airbag - Side, head protection (2 <sup>nd</sup> row seats)	<b>S</b>
Airbag - Side, head protection (3 <sup>rd</sup> row seats)	<b>S</b>
Airbag - Knee (driver)	<b>S</b>
Airbag - Knee (front passenger)	<b>S</b>
Head restraints for all seats	<b>S</b>
Adaptive cruise control (ACC)	<b>V</b>
Antilock braking system (ABS)	<b>S</b>
Automatic headlights	<b>V</b>
Autonomous emergency braking (AEB)	<b>V</b>
Daytime running lights (DRL)	<b>V</b>
Electronic brakeforce distribution (EBD)	<b>S</b>
Electronic stability control (ESC)	<b>S</b>
Emergency brake assist (EBA)	<b>S</b>
Hill launch assist	<b>S</b>
Lane support system (LSS)	<b>V</b>
Reversing collision avoidance	<b>V</b>

These specifications are subject to change. Please check with the manufacturer for the latest specifications.

- S** = Standard on all variants.  
**O** = Optional on base variant. May be standard on higher variants.  
**V** = Not available on base variant but standard or optional on higher variants.  
**X** = Not available on any variant.  
**E** = Available in Europe / USA but not available on any Australasian variant.

**ANCAP**

Safety ★★★★★



# ANCAP Safety Rating: TOYOTA LANDCRUISER (October 2015 - onwards)

## Injury Values & Measurements.

Body Region	Frontal offset test at 64 km/h (v5.1)		Side impact test at 50 km/h (v5.1)	
	Driver	Passenger	Driver	
<b>Head</b>				
HIC	373.00	188.00	HIGH-SEAT VEHICLE DEFAULT SCORE AWARDED	
Acceleration (g for 3ms)	50.10	33.00		
<b>Neck</b>				
Shear (kN)	0.54	0.79		
Tension (kN)	1.83	1.20		
Extension (Nm)	16.60	9.40		
<b>Chest</b>				
Acceleration (g for 3ms)	-	-		
Compression (mm)	29.60	22.80		
Viscous criterion (m/s)	0.13	0.08		
<b>Abdomen</b>				
Force (kN)	-	-		
<b>Pelvis</b>				
Force (kN)	-	-		
<b>Upper legs</b>				
Femur force left (kN)	1.09	1.37		
Femur force right (kN)	2.01	1.27		
Knee displacement left (mm)	2.39	5.20		
Knee displacement right (mm)	4.04	3.47		
<b>Lower legs</b>				
Force left (kN)	2.52	1.62		
Force right (kN)	2.24	2.38		
Index (upper / lower) left	0.43 / 0.30	0.39 / 0.35		
Index (upper / lower) right	0.39 / 0.81	0.32 / 0.28		
<b>Intrusion Measurements*</b>				
<b>Steering column</b>				
Forward (mm)	-1			
Upward (mm)	11			
Sideways (mm)	8			
<b>Pedals</b>				
Brake - rearward (mm)	98			
Accelerator - upward (mm)	12			
<b>A-Pillar</b>				
Rearward (mm)	-3			

\* ANCAP safety ratings do not automatically extend to variants that have different body styles, engine configurations, driven wheels or occupant restraint systems (e.g. fewer airbags). In these cases, ANCAP considers technical evidence submitted by manufacturers before deciding on extending a rating to additional variants of a model. For further information about the application of ANCAP safety ratings to model variants, see the ANCAP Variant Policy.

^ The Rating Year denotes the year requirements against which a vehicle has been assessed. The Rating Year is determined by ANCAP and may be based on the year in which a new vehicle model is first launched into the Australian and/or New Zealand markets; the year in which the vehicle was tested (if tested by Euro NCAP); or, for vehicles which hold an existing ANCAP safety rating, the year in which the rating was updated (or earlier applicable year).

### Assessment Details.

<b>Tested Make / Model</b>	LandCruiser 200 Series Sahara
<b>Tested Vehicle(s) Built</b>	2012
<b>Tested Body Type</b>	SUV
<b>Tested Vehicle Kerb Weight</b>	2710 kg
<b>Tested Vehicle Engine</b>	4.6 litre petrol V8
<b>Tested By</b>	ANCAP
<b>Assessed By</b>	ANCAP
<b>Document created/revised</b>	20 October 2015
<b>Document Reference</b>	LANDCRUISER15
<b>Rating Published</b>	October 2015
<b>Rating Updated</b>	n/a

