

Crash Test Results

New Car Safety

TOYOTA COROLLA HATCH

From Oct 2012 Front+side+head+knee airbags



ANCAP
Safety ★★★★★

Safety Rating

Occupant Protection Score 35.25 out of 37

Tested variant: 5 door hatch Eng: 1.8 petrol

Kerb mass: 1270 kg Category: CAR - SMALL

Vehicles built: 2012 Tested at JARI for ANCAP

Model History and Safety Features

The tested model of Corolla Hatch was introduced in Australia during 2012.

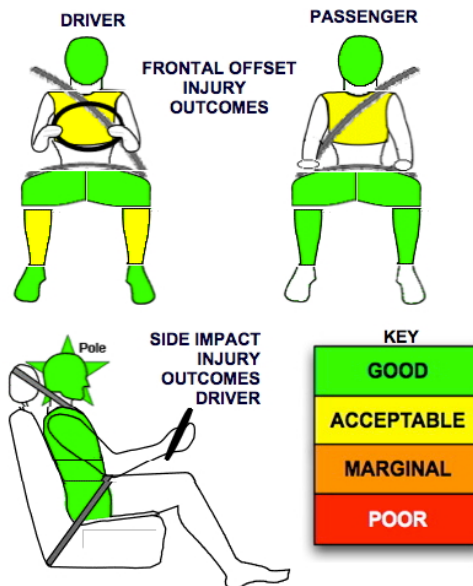
Dual front airbags, side airbags, head-protecting side curtains and driver knee airbag are standard equipment. Antilock brakes (ABS), electronic brake distribution (EBD) and electronic stability control (ESC) are also standard. Advanced seat belt reminders are fitted to all seats.

Pretensioners are fitted to the front seat belts to reduce slack in the event of a crash.

OCCUPANT PROTECTION: 5 Stars

The Corolla scored 15.25 out of 16 in the offset crash test. The passenger compartment held its shape well. There was a slight chance of serious chest injury for the driver and passenger.

The vehicle scored 15 out of 16 in the side impact crash test. All injury values were good but a door was found to be not fully latched after the crash and so a one point deduction was applied. A further 2 points were scored in the pole test.



Whiplash Protection

(RCAR Protocol)



Offset crash test at 64km/h

FRONTAL OFFSET CRASH TEST

Body region scores out of 4 points each: Head/neck 4 pts, chest 3.61 pts, upper legs 4 pts, lower legs 3.64 pts.

The passenger compartment held its shape well in the offset crash test. The accelerator pedal moved rearwards by 42 mm. The brake and accelerator pedals moved upwards 9 mm. The steering wheel hub moved 43mm forward, 10mm downward and 6mm sideways. The front ("A") pillar moved 21 mm rearwards. All doors remained closed during the crash. After the crash the driver's door could be opened with normal effort.

The airbag cushioned the head of the driver and contact was stable. There were no knee hazards. The passenger's head was cushioned by the airbag.

SIDE IMPACT CRASH TEST

Body region scores out of 4 points each: Head 4 pts, chest 4 pts, abdomen 4 pts, pelvis 4 pts.

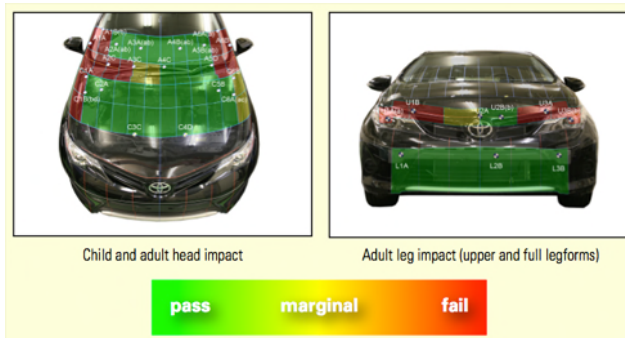
The driver side rear door latch moved to the secondary latch position during the crash.

The vehicle scored maximum points in the side pole impact test.

PEDESTRIAN PROTECTION: ACCEPTABLE

Most areas likely to be struck by the head of an adult or child pedestrian offered good protection. The bumper also provided good leg protection. The front and side edges of the bonnet had mixed protection.

PEDESTRIAN PROTECTION	Child head impacts	10.32
ACCEPTABLE v5.3	Adult head impacts	6.77
	Upper leg impacts	1.48
	Lower leg impacts	6
	Total (out of 36)	24.57



OCTOBER 2012

PO Box 4041

Manuka ACT 2603

corolla12.doc Rated: 2012

Issued 8/10/2012



ANCAP

Crash testing for safety

AUSTRALASIAN
NEW CAR ASSESSMENT
PROGRAM

www.ancap.com.au

TECHNICAL DATA - COROLLA - From Oct 2012

INJURY MEASUREMENTS

Body region	Offset Crash Test at 64km/h (v5.1)		Side Impact Crash Test at 50km/h (v5.1)
	Driver	Passenger	Driver
Head HIC	293	271	51
Acceleration (g for 3ms)	40.3	39.7	22.7
Neck - Shear (kN)	0.21	0.03	-
Tension (kN)	1.50	1.00	-
Extension (Nm)	8.4	29.4	-
Chest Accln (g for 3ms)	-	-	-
Compression (mm)	24.47	24.71	15.59
Viscous criterion (m/s)	0.12	0.07	0.08
Abdomen - Force (kN)	-	-	0.75
Pelvis - Force (kN)	-	-	2.04
Upper legs Force (kN)			
Left	1.81	0.82	
Right	1.70	1.87	
Knee displ (mm)			
Left	2.54	0.22	
Right	0.80	3.54	
Lower legs Force (kN)			
Left	2.23	1.87	
Right	2.54	1.56	
Index (Upper/Low)			
Left	0.25 /0.18	0.35 /0.16	
Right	0.35 /0.16	0.23/0.22	

Bonus points (maximum 5)

Pole Test: 2 pts

Seat belt reminders: 3 (see table below for details)

Modifiers - deductions from offset test scores

Head	No deduction
Chest	No deduction
Upper leg Variable & conc. loading	No deduction
Lower leg	No deduction
Foot score	Score 4 points

Modifiers - deductions from side impact test scores

Chest	No deduction
Door Open (moved to secondary latch position)	1 pt deduction



Safety features

These specifications are subject to change. Please check with manufacturer for the latest specifications.

Driver airbag	S	Antilock (ABS) brakes / Electronic brake distribution / Brake Assist	S/S/S
Passenger front airbag	S	Electronic stability control (ESC, VSC, DSC, ESP, VSA)	S#
Side airbags, front seats - chest protection	S	3 point seat belt for all forward-facing seats	S
Side airbags, front seats - head protection	S	Whiplash rating (RCAR protocol)	Acceptable
Side airbags, rear seats - head protection	S	Intelligent seat belt reminder - driver	S
Driver knee airbag	S	Intelligent seat belt reminder - front passenger	S
Seat belt pretensioners (Front/rear outboard)	S/X	Intelligent seat belt reminder - rear seats	S

Key:

S = standard on all variants

O = optional on base variant. May be standard on higher variants

V= not available on base variant but standard or optional on higher variants

X = not available on any variant

ESC required by ANCAP for 5 star rating from 2008



ANCAP

Crash testing for safety

AUSTRALASIAN
NEW CAR ASSESSMENT
PROGRAM

www.ancap.com.au