

Crash Test Results

New Car Safety

SUZUKI GRAND VITARA (LHD)

2006 on Front+side+head airbags*



Offset crash test at 64km/h

FRONTAL OFFSET CRASH TEST (v4.1)

Body region scores out of 4 points each: Head/neck 3 pts, chest 3.03 pts, upper legs 2 pts, lower legs 2.84 pts.

The footwell deformed excessively and panels separated. The brake pedal moved rearwards by 59 mm and downwards 2mm. The steering wheel hub moved 25mm rearwards, 37mm upwards and 2mm sideways. The front ("A") pillar moved 37 mm rearwards. All doors remained closed during the crash. After the crash the driver's door could be opened with high manual effort.

The airbag cushioned the head of the driver and contact was stable but the airbag bottomed out. Steering column and dash components were a potential source of injury for the driver's knees. The passenger's head was cushioned by the airbag. The glove box and dash were a potential knee hazard for the passenger.

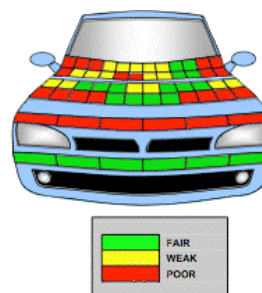
SIDE IMPACT CRASH TEST (v4.1)

Body region scores out of 4 points each: Head 4 pts, chest 4 pts, abdomen 4 pts, pelvis 4 pts.

The European vehicle was eligible for an optional pole impact test, since it had head-protecting side airbags and scored four points for the head in the side impact test. The manufacturer decided to go ahead with the pole test and the vehicle earned a further two points.

PEDESTRIAN PROTECTION RATING (v4.1)

PEDESTRIAN PROTECTION		
	Child head impacts	7.34
	Adult head impacts	5.52
	Upper leg impacts	Zero
	Lower leg impacts	6
	Total (out of 36)	18.86



Occupant Protection Score 28.87* out of 37

*Safety equipment, as tested, not standard on all variants

Variant: Diesel LHD

Eng: 1.9 litre diesel

Kerb weight: 1670 kg

Category: 4WD - COMPACT

Vehicles built: 2006

Important note: The diesel left-hand-drive European model with curtains was tested by Euro NCAP.

Australasian specifications may vary and therefore models sold in Australasia might provide different levels of protection to those described on this page.

Model History and Safety Features

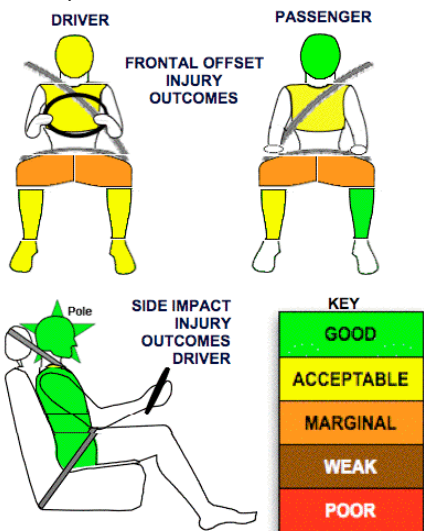
The tested model of Suzuki Grand Vitara was introduced in Australia during 2006.

Dual front airbags are standard equipment. Antilock brakes (ABS) with electronic brake distribution (EBD) are also standard. Side airbags and head-protecting side curtains are available on the New Zealand LTD variant and Australian Prestige variant. Electronic stability control (ESC) is standard on the Prestige. An intelligent seat belt reminder is fitted to the driver seat in Europe but the Australian model does not have this feature.

The front seat belt buckles are mounted on the seats and the upper anchorages are adjustable. These features improve the fit of the seat belt. Pretensioners are fitted to the front seat belts to reduce slack in the event of a crash. A three point seat belt is fitted to the centre rear seat. This provides better protection than a two point (lap) seat belt.

OCCUPANT PROTECTION: 4 Stars

The Suzuki Grand Vitara scored 10.87 out of 16 in the offset crash test. The passenger compartment held its shape reasonably well except in the footwell area. Protection from serious leg injury was marginal for the driver and passenger. The vehicle scored 16 out of 16 in the side impact crash test and a further two points in the optional pole test.



November 2007

PO Box 1555

Canberra ACT Australia

2601

vitara06.doc

Issued 9/11/07

ANCAP
Crash testing for safety

AUSTRALASIAN
NEW CAR ASSESSMENT
PROGRAM

TECHNICAL DATA - SUZUKI GRAND VITARA WITH CURTAINS 2006 on

INJURY MEASUREMENTS

Body region	Offset Crash Test at 64km/h (v4.1)		Side Impact Crash Test at 50km/h (v4.1)
	Driver	Passenger	Driver
Head HIC	369	421	45
Acceleration (g for 3ms)	50.6	56.5	23.3
Neck - Shear (kN)	0.59	0.31	-
Tension (kN)	1.24	1.04	-
Extension (Nm)	17.1	16.1	-
Chest Accln (g for 3ms)	-	-	-
Compression (mm)	28.81	24.14	12.99
Viscous criterion (m/s)	0.14	0.10	0.06
Abdomen - Force (kN)	-	-	0.310
Pelvis - Force (kN)	-	-	0.680
Upper legs Force (kN)			
Left	0.08	0.23	
Right	0.10	1.43	
Knee displ (mm)			
Left	0.00	0.00	
Right	0.00	0.00	
Lower legs Force (kN)			
Left	1.08	1.66	
Right	1.51	1.38	
Index (Upper/Low)			
Left	0.44 /0.66	0.40 /0.39	
Right	0.30 /0.54	0.43/0.16	

Bonus points (maximum 5)

Pole Test: 2 pts for LTD/Prestige variants. Other variants not eligible due to a lack of head-protecting side airbags

Seat belt reminders: None

Modifiers - deductions from offset test scores

Head	Airbag bottomed out	1 pt deduction
Chest		No deduction
Upper leg	Variable & conc. loading for driver and passenger	2 pt deduction Left & Right
Lower leg		No deduction
Foot score	Footwell rupture	Score 3 points



Modifiers - deductions from side impact test scores

Chest	No deduction
-------	--------------

Safety features

These specifications are subject to change. Please check with manufacturer for the latest specifications.

Driver airbag	S	Antilock (ABS) brakes / Electronic brake distribution	S/S
Passenger front airbag	S	Electronic stability control (ESC, VSC, DSC, ESP, VSA)	V (NZ X)
Side airbags, front seats - chest protection	V √	3 point centre rear seat belt	S
Side airbags, front seats - head protection	V √	Active head restraints - front seats	
Side airbags, rear seats - head protection	V √	Intelligent seat belt reminder - driver	X*
Driver knee airbag	X	Intelligent seat belt reminder - front passenger	X
Front seat belt pretensioners	S	Rear seat belt status indicator	X

* European model has a seat belt reminder for the driver. This earned a bonus point.

Key: √ = Fitted to vehicle that was crash tested (where not standard)

S = standard on all variants

O = optional on base variant. May be standard on higher variants

V = not available on base variant but standard or optional on higher variants

X = not available on any variant