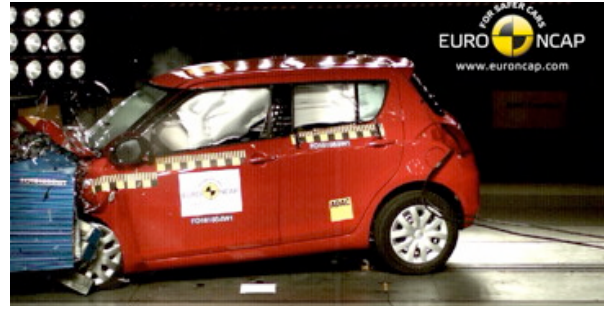


Crash Test Results

New Car Safety

SUZUKI SWIFT

From 2011 Front+side+head+knee airbags



Offset crash test at 64km/h

FRONTAL OFFSET CRASH TEST

Body region scores out of 4 points each: Head/neck 4 pts, chest 3.98 pts, upper legs 4 pts, lower legs 3.7 pts.

The passenger compartment held its shape well in the offset crash test. The brake pedal moved rearwards by 95 mm and upwards 46 mm. The blocked displacement was 87mm. The steering wheel hub moved 12mm forward, 10 mm upward and 1 mm sideways. The front ("A") pillar moved 3 mm rearwards. All doors remained closed during the crash. After the crash all doors could be opened with normal effort.

The airbag cushioned the head of the driver and contact was stable. The knee airbag protected the driver's knees. The passenger's head was cushioned by the airbag. The side curtain deployed in this crash test – this can provide extra protection in secondary impacts.

SIDE IMPACT CRASH TEST

Body region scores out of 4 points each: Head 4 pts, chest 3.88 pts, abdomen 4 pts, pelvis 4 pts.

The vehicle was eligible for an optional pole impact test, since it had head-protecting side airbags. The vehicle earned the maximum two points in this test.

PEDESTRIAN PROTECTION: Acceptable

The front edge of the bonnet scored no points for the protection it offers to pedestrians' legs. The protection offered by the bumper was predominantly good, as was the protection provided by the bonnet in most areas likely to be struck by the head of a child.



Occupant Protection Score 35.55 out of 37

Variant: GL Eng: 1.2 litre (tested)
Kerb mass 990 kg Category: CAR - LIGHT
Vehicles built: 2010 Tested by Euro NCAP

Important note: The *left-hand-drive* European model with a 1.2 engine was tested by Euro NCAP. Australasian specifications may vary and therefore models sold in Australasia might provide different levels of protection to those described on this page.

Model History and Safety Features

The tested model of Suzuki Swift was introduced in Australia during 2011. The Australian variants have 1.4 and 1.6 litre engines that have similar dimensions to the tested engine. This rating applies to all variants, including the Sport.

Dual front airbags, driver knee airbags, side airbags and head-protecting side curtains are standard equipment. Antilock brakes (ABS), electronic brakeforce distribution (EBD) and electronic stability control (ESC) are also standard. Intelligent seat belt reminders are fitted to both front seats.

Pretensioners are fitted to the front seat belts to reduce slack in the event of a crash. A three point seat belt is fitted to the centre rear seat. This provides better protection than a two point (lap) seat belt.

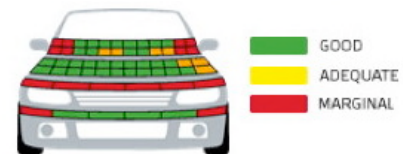
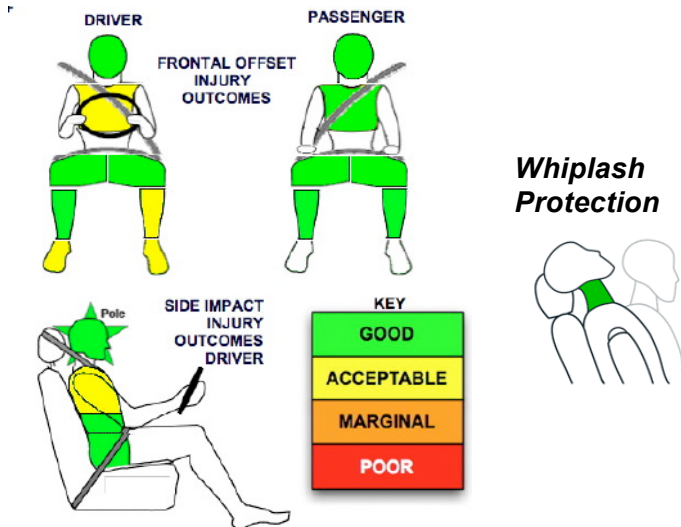
OCCUPANT PROTECTION: 5 Stars

The Swift scored 15.68 out of 16 in the offset crash test. The passenger compartment held its shape well. There was a slight risk of serious chest and leg injury for the driver.

The vehicle scored 15.8 out of 16 in the side impact crash test and a further two points in the optional pole test.

PEDESTRIAN PROTECTION	Child head impacts	11.26
ACCEPTABLE	Adult head impacts	7.15
	Upper leg impacts	Zero
	Lower leg impacts	4
	Total (out of 36)	22.41

Tested by Euro NCAP v5



JANUARY 2011

PO Box 4041
Manuka ACT 2603
swift11.doc
Revised 2/4/2012



TECHNICAL DATA - SUZUKI SWIFT - From 2011

INJURY MEASUREMENTS

Body region	Offset Crash Test at 64km/h (v5.1)		Side Impact Crash Test at 50km/h (v5.1)
	Driver	Passenger	Driver
Head HIC	246	328	121
Acceleration (g for 3ms)	38.4	42.4	31.3
Neck - Shear (kN)	0.21	0.60	-
Tension (kN)	0.58	0.40	-
Extension (Nm)	13.9	19.0	-
Chest Accln (g for 3ms)	-	-	-
Compression (mm)	22.17	21.61	22.61
Viscous criterion (m/s)	0.08	0.12	0.18
Abdomen - Force (kN)	-	-	0.880
Pelvis - Force (kN)	-	-	1.340
Upper legs Force (kN)			
Left	1.82	1.20	
Right	0.89	0.20	
Knee displ (mm)			
Left	4.10	2.10	
Right	4.20	0.10	
Lower legs Force (kN)			
Left	2.10	1.60	
Right	1.48	1.35	
Index (Upper/Low)			
Left	0.29 /0.28	0.27 /0.29	
Right	0.29 /0.12	0.27/0.15	

Bonus points (maximum 5)

Pole Test: 2 pts

Seat belt reminders: 2 (see table below for details)

Modifiers - deductions from offset test scores

Head No deduction
 Chest No deduction
 Upper leg Variable & conc. loading No deduction
 Lower leg No deduction
 Foot score Blocked pedal 0.3 pt deduction, score 3.7 points

Modifiers - deductions from side impact test scores

Chest No deduction

Safety features

These specifications are subject to change. Please check with manufacturer for the latest specifications.



Driver airbag	S	Antilock (ABS) brakes / Electronic brake distribution / Brake Assist	S/S/S
Passenger front airbag	S	Electronic stability control (ESC, VSC, DSC, ESP, VSA)	S#
Side airbags, front seats - chest protection	S	3 point centre rear seat belt	S
Side airbags, front seats - head protection	S	Whiplash protection (RCAR protocol)	Good
Side airbags, rear seats - head protection		Intelligent seat belt reminder - driver	S
Driver knee airbag	S	Intelligent seat belt reminder - front passenger	S
Seat belt pretensioners (Front/Rear outboard)	S/X	Intelligent seat belt reminder - rear seats	X

Key:

S = standard on all variants

O = optional on base variant. May be standard on higher variants

V= not available on base variant but standard or optional on higher variants

X = not available on any variant

ESC required by ANCAP for 5 star rating from 2008