

Crash Test Results

New Car Safety

SUZUKI KIZASHI

From 2011 Front+side+head+knee airbags



Offset crash test at 64km/h

FRONTAL OFFSET CRASH TEST

Body region scores out of 4 points each: Head/neck 4.000 pts, chest 3.129 pts, upper legs 3.858 pts, lower legs 3.840 pts.

The passenger compartment held its shape well in the offset crash test. The accelerator pedal moved rearwards by 46 mm. The steering wheel hub moved 36mm forward, 38 mm upward and 4 mm sideways. The front ("A") pillar moved 4 mm rearwards. All doors remained closed during the crash. After the crash all doors could be opened with normal effort.

The airbag cushioned the head of the driver and contact was stable. The knee airbag protected the driver's knees. The passenger's head was cushioned by the airbag.

SIDE IMPACT CRASH TEST

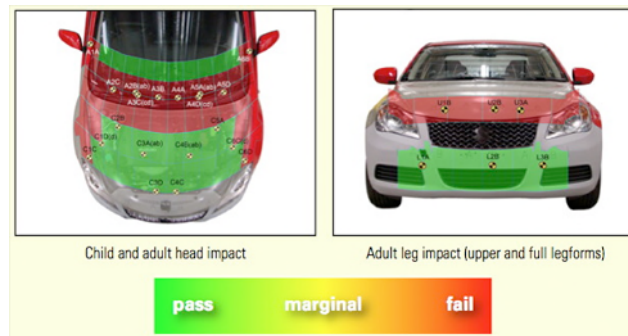
Body region scores out of 4 points each: Head 4 pts, chest 4 pts, abdomen 4 pts, pelvis 4 pts.

The vehicle achieved full points in the side impact and pole crash tests.

PEDESTRIAN PROTECTION: Marginal

Poor results along the base of the windscreen and sides of the bonnet. The Kizashi performed well in the full leg tests, but performed poorly for the upper leg tests. Points have been awarded for areas of the windscreen clear of structure.

PEDESTRIAN PROTECTION	Child head impacts	9
MARGINAL	Adult head impacts	2.5
	Upper leg impacts	Zero
	Lower leg impacts	6
	Total (out of 36)	17.5



Occupant Protection Score 34.83 out of 37

Variant: XLS

Eng: 2.4

Kerb mass: 1530 kg

Category: CAR - MEDIUM

Vehicles built: 2010

Model History and Safety Features

The tested model of Suzuki Kizashi was introduced in Australia during 2010. This 5-star rating applies to Kizashi models with seven airbags and front seat belt reminders. Not all 2010 year models have these features.

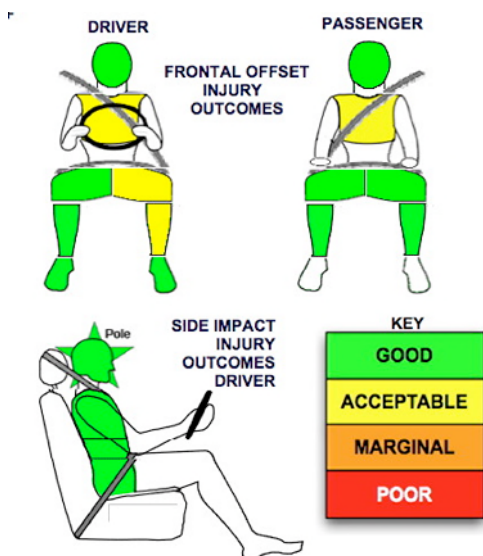
Dual front airbags, driver knee airbag, side airbags and head-protecting side curtains are now standard equipment. Antilock brakes (ABS), electronic brake distribution (EBD) and electronic stability control (ESC) are also standard. Intelligent seat belt reminders are fitted to both front seats.

Pretensioners are fitted to the front seat belts to reduce slack in the event of a crash. A three point seat belt is fitted to the centre rear seat.

OCCUPANT PROTECTION: 5 Stars

The Kizashi scored 14.83 out of 16 in the offset crash test. The passenger compartment held its shape well. There was a slight risk of serious chest and leg injury for the driver.

The vehicle scored 16 out of 16 in the side impact crash test and a further 2 points in the optional pole test.



JANUARY 2011

PO Box 4041

Manuka ACT 2603

KIZASHI10.DOC

Revised 12/5/2011



TECHNICAL DATA - SUZUKI KIZASHI - 2011 on

INJURY MEASUREMENTS

Body region	Offset Crash Test at 64km/h (v4.2)		Side Impact Crash Test at 50km/h (v4.2)
	Driver	Passenger	Driver
Head HIC	171	199	39
Acceleration (g for 3ms)	33.4	39.6	20.2
Neck - Shear (kN)	0.30	0.54	-
Tension (kN)	0.95	0.80	-
Extension (Nm)	13.3	10.9	-
Chest Accln (g for 3ms)	33.400	33.800	-
Compression (mm)	27.37	28.10	15.10
Viscous criterion (m/s)	0.07	0.08	0.07
Abdomen - Force (kN)	-	-	0.430
Pelvis - Force (kN)	-	-	1.020
Upper legs Force (kN)			
Left	1.48	0.29	
Right	0.72	0.44	
Knee displ (mm)			
Left	6.32	0.60	
Right	2.04	0.42	
Lower legs Force (kN)			
Left	2.24	1.66	
Right	1.58	1.84	
Index (Upper/Low)			
Left	0.37 /0.16	0.39 /0.19	
Right	0.28 /0.25	0.36/0.15	

Bonus points (maximum 5)

Pole Test: 2 pts

Seat belt reminders: 2 (see table below for details)

Modifiers - deductions from offset test scores

Head	No deduction
Chest	No deduction
Upper leg Variable & conc. loading	No deduction
Lower leg	No deduction
Foot score	Score 4 points

Note: Steering column and pedal movements are measured relative to the driver's seat.

Modifiers - deductions from side impact test scores

Chest	No deduction
-------	--------------

Safety features (2011 model year)

These specifications are subject to change. Please check with manufacturer for the latest specifications.

Driver airbag	S	Antilock (ABS) brakes / Electronic brake distribution / Brake Assist	S/S/S
Passenger front airbag	S	Electronic stability control (ESC, VSC, DSC, ESP, VSA)	S#
Side airbags, front seats - chest protection	S	3 point centre rear seat belt	S
Side airbags, front seats - head protection	S	Whiplash rating	Pending
Side airbags, rear seats - head protection	S	Intelligent seat belt reminder - driver	S
Driver knee airbag	S	Intelligent seat belt reminder - front passenger	S
Seat belt pretensioners (Front/rear outboard)	S/X	Intelligent seat belt reminder - rear seats	X

Key:

S = standard on all variants

O = optional on base variant. May be standard on higher variants

V= not available on base variant but standard or optional on higher variants

X = not available on any variant

ESC required by ANCAP for 5 star rating from 2008



ANCAP

Crash testing for safety

AUSTRALASIAN
NEW CAR ASSESSMENT
PROGRAM