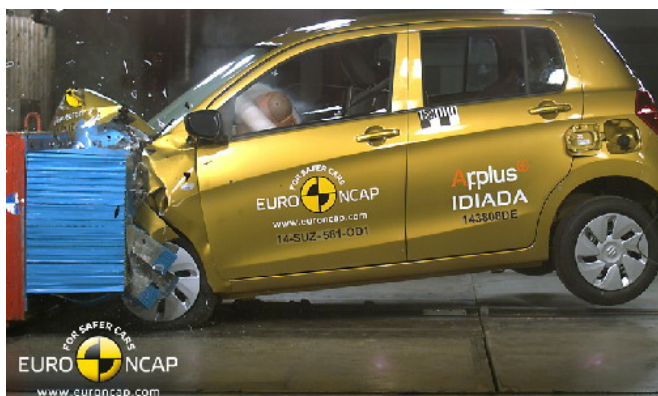


# ANCAP Safety Rating: SUZUKI CELERIO (2015 - onward)



Frontal offset test at 64km/h

## This ANCAP safety rating applies to:

Make / Model	Suzuki Celerio
Year Range	2015 - onward
Variant(s)*	All variants
Vehicle Type	Small Car

The tested model of Suzuki Celerio was introduced in Australia and New Zealand in 2015. This ANCAP safety rating applies to all variants.

Dual frontal, side chest (1<sup>st</sup> row) and side head-protecting curtain airbags (1<sup>st</sup> and 2<sup>nd</sup> row) are standard. Antilock brakes (ABS), electronic brake distribution (EBD) and electronic stability control (ESC) are also standard. Advanced seat belt reminders are fitted to all seats on the Australasian model.

The left-hand-drive European model without head-protecting side curtain airbags was tested by Euro NCAP. ANCAP was provided with information which showed that the Euro NCAP results apply to Australasian models with curtains.

## Injury Outcomes.

### Frontal Offset Driver



### Passenger



### Side Impact Driver



### Whiplash Protection

#### Driver



## Test Results Summary.

Airbags	Dual Frontal, Side, Head
Frontal Offset Test	13.58 (out of 16)
Side Impact Test	16.00 (out of 16)
Pole Test	Not tested (out of 2)
Whiplash Protection	Good
Pedestrian Protection	Acceptable
ESC	Standard
Seat Belt Reminders	3 (out of 3)
Overall Score	32.49** (out of 37)
ANCAP Safety Rating	★★★★★
Rating Year <sup>^</sup>	2015

## Occupant Protection.

### Frontal Offset Test

Each body region is scored out of 4 points

Head / neck:	4.00 points
Chest:	3.45 points
Upper legs:	4.00 points
Lower legs:	2.13 points

The passenger compartment held its shape well in the frontal offset test. Pedal and steering wheel displacements were well controlled. Driver and passenger contact with the airbags was stable. All doors remained closed during the crash.

### Side Impact Test

Each body region is scored out of 4 points

Head:	4.00 points
Chest:	4.00 points
Abdomen:	4.00 points
Pelvis:	4.00 points

Despite the lack of head-protecting side curtain airbags in the Euro NCAP test of the Celerio, good protection was provided for the driver in the side impact test.

### Pole Test

Scored out of 2 points

Score: 0.00 points (Not tested)

A pole test was not conducted by Euro NCAP.

### Whiplash Protection Test

Whiplash protection is assessed to the RCAR Protocol

Geometric test:	Good
Dynamic test:	Good
Overall whiplash rating:	Good

\*\* The safety rating for the Suzuki Celerio was limited to 4 stars because it does not meet the minimum safety assist technologies (SAT) requirements for a 5 star rating. A successful pole test would also be required for a 5 star ANCAP safety rating. The overall score has therefore been truncated.

# ANCAP Safety Rating: SUZUKI CELERIO (2015 - onward)



## Pedestrian Protection.

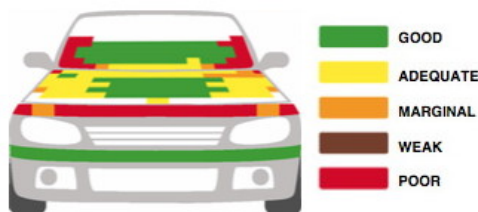
### Pedestrian Test

Scored out of 36 points

Child head impacts:	10.00 points
Adult head impacts:	8.05 points
Upper leg impacts:	0.79 points
Lower leg impacts:	6.00 points

This vehicle scored 24.84 out of 36 points (Acceptable). The Celerio scored maximum points for the protection provided by its bumper to pedestrians' legs. However, the front edge of the bonnet was almost entirely poor in its protection of the pelvis area. The bonnet surface offered predominantly good or adequate protection to a pedestrian's head, with poor results recorded only on the stiff windscreen pillars.

(Tested by Euro NCAP v7)



## Score Deductions.

### Deductions from frontal offset test scores

Head:	No deduction
Chest:	No deduction
Upper leg:	No deduction
Lower leg:	No deduction
Feet:	No deduction

### Deductions from side impact test score

Chest:	No deduction
--------	--------------

### Deductions from pole test score

Not tested

## Safety Features & Technologies.

Descriptions of each of these safety features and safety assist technologies (SAT) and detail on fitting requirements for each star rating level can be found at [ancap.com.au](http://ancap.com.au).

Safety Feature / Safety Assist Technology	Availability
Seat belts (three-point) for all forward-facing seats	S
Seat belt pretensioners (front)	S
Seat belt pretensioners (rear outboard)	X
Intelligent seat belt reminder (driver)	S
Intelligent seat belt reminder (front passenger)	S
Intelligent seat belt reminder (2 <sup>nd</sup> row seats) <sup>^^</sup>	S
Airbag - Front (driver)	S
Airbag - Front (passenger)	S
Airbag - Side, chest protection (front seats)	S
Airbag - Side, chest protection (2 <sup>nd</sup> row seats)	X
Airbag - Side, head protection (front seats) <sup>^^</sup>	S
Airbag - Side, head protection (2 <sup>nd</sup> row seats) <sup>^^</sup>	S
Airbag - Side, head protection (3 <sup>rd</sup> row seats)	N/A
Airbag - Knee (driver)	X
Airbag - Knee (front passenger)	X
Head restraints for all seats	S
Adaptive cruise control (ACC)	X
Antilock braking system (ABS)	S
Autonomous emergency braking (AEB)	X
Electronic brakeforce distribution (EBD)	S
Electronic stability control (ESC)	S
Emergency brake assist (EBA)	S
Electronic data recorder (EDR)	S
Lane support system (LSS)	X
Daytime running lights (DRL)	O
Hill launch assist (HLA)	V
Reversing collision avoidance (RCA)	O
Tyre pressure monitoring system (TPMS)	X

These specifications are subject to change. Please check with the manufacturer for the latest specifications.

- S** = Standard on all variants.
- O** = Optional on base variant. May be standard on higher variants.
- V** = Not available on base variant but standard or optional on higher variants.
- X** = Not available on any variant.
- E** = Available in Europe / USA but not available on any Australasian variant.
- ^^** = Standard in Australasia but not in Europe.

# ANCAP Safety Rating: SUZUKI CELERIO (2015 - onward)



**ANCAP**

Safety ★★★★★



## Injury Values & Measurements.

Body Region	Frontal offset test at 64 km/h (v6)		Side impact test at 50 km/h (v6)
	Driver	Passenger	Driver
<b>Head</b>			
HIC	365.00	398.00	135.00
Acceleration (g for 3ms)	52.40	47.60	51.10
<b>Neck</b>			
Shear (kN)	0.46	0.47	-
Tension (kN)	1.39	0.63	-
Extension (Nm)	18.10	11.60	-
<b>Chest</b>			
Acceleration (g for 3ms)	-	-	-
Compression (mm)	25.84	25.87	21.08
Viscous criterion (m/s)	0.00	0.00	0.12
<b>Abdomen</b>			
Force (kN)	-	-	0.77
<b>Pelvis</b>			
Force (kN)	-	-	1.85
<b>Upper legs</b>			
Femur force left (kN)	0.08	0.32	
Femur force right (kN)	0.67	0.04	
Knee displacement left (mm)	0.53	0.02	
Knee displacement right (mm)	0.00	0.00	
<b>Lower legs</b>			
Force left (kN)	2.15	1.55	
Force right (kN)	1.87	2.04	
Index (upper / lower) left	0.41 / 0.82	0.36 / 0.12	
Index (upper / lower) right	0.44 / 0.29	0.47 / 0.26	
<b>Intrusion Measurements</b>			
<b>Steering column</b>			
Forward (mm)	35		
Upward (mm)	3		
Sideways (mm)	8		
<b>Pedals</b>			
Brake - rearward (mm)	52		
Brake - upward (mm)	25		
<b>A-Pillar</b>			
Rearward (mm)	4		

\* ANCAP safety ratings do not automatically extend to variants that have different body styles, engine configurations, driven wheels or occupant restraint systems (e.g. fewer airbags). In these cases, ANCAP considers technical evidence submitted by manufacturers before deciding on extending a rating to additional variants of a model. For further information about the application of ANCAP safety ratings to model variants, see the ANCAP Variant Policy.

^ The Rating Year denotes the year requirements against which a vehicle has been assessed. The Rating Year is determined by ANCAP and may be based on the year in which a new vehicle model is first launched into the Australian and/or New Zealand markets; the year in which the vehicle was tested (if tested by Euro NCAP); or, for vehicles which hold an existing ANCAP safety rating, the year in which the rating was updated (or earlier applicable year).

## Assessment Details.

<b>Tested Make / Model</b>	Suzuki Celerio GL manual LHD
<b>Tested vehicle(s) Built</b>	2014
<b>Tested Body Type</b>	4 door hatch
<b>Tested Vehicle Kerb Weight</b>	823 kg
<b>Tested Vehicle Engine</b>	1.0 litre petrol
<b>Tested By</b>	Euro NCAP
<b>Assessed By</b>	ANCAP
<b>Document Reference</b>	CELERIO15
<b>Rating Published</b>	5 February 2015
<b>Rating Updated</b>	n/a

