

# ANCAP Safety Rating SUBARU WRX (From 2014)



**ANCAP**  
Safety ★★★★★

## Test Vehicle(s).

Variant:	WRX-L
Kerb Mass:	1560 kg
Built:	2014
Engine:	2.0 petrol
Category:	SMALL CAR
Variant Applicability*:	All variants



Frontal offset test at 64 km/h

Airbags	ESC	Frontal Offset	Side Impact	Pole	Whiplash	Pedestrian	Seat Belt Reminders	Overall Score	ANCAP Safety Rating
Frontal + Side + Head + Knee	Standard	14.85 (out of 16)	16.00 (out of 16)	2.00 (out of 2)	GOOD	GOOD	3 (out of 3)	35.85 (out of 37)	★★★★★

The tested model of Subaru WRX was introduced in Australia and New Zealand in 2014. This ANCAP safety rating applies to all variants. Crash tests were conducted under ANCAP's niche vehicle policy.

Dual frontal, side chest and side head airbags (curtains) and a driver knee airbag are standard. Antilock brakes (ABS), electronic brake distribution (EBD) and electronic stability control (ESC) are also standard. Advanced seat belt reminders are fitted to all seats.

In the offset crash test driver chest and leg protection was acceptable. Passenger chest and leg protection was also acceptable. Driver protection was good in the side impact crash test. Head protection in the side pole test was also good.

## OCCUPANT PROTECTION

### Frontal Offset Test.

Each body region is scored out of 4 points

Head / neck:	4.00 points
Chest:	3.47 points
Upper legs:	4.00 points
Lower legs:	3.38 points

The passenger compartment held its shape well in the offset test. Pedal and steering wheel displacements were well controlled. Driver and passenger contact with the airbags was stable. All doors remained closed during the crash. After the crash all doors could be opened with normal effort.

### Side Impact Test.

Each body region is scored out of 4 points

Head:	4.00 points
Chest:	4.00 points
Abdomen:	4.00 points
Pelvis:	4.00 points

Good protection was provided for the driver in the side impact test. The side airbags performed well.

### Pole Test.

Scored out of 2 points

The vehicle was eligible for a side pole test because it has side curtain airbags. The vehicle scored the maximum 2 points for head protection in this test.

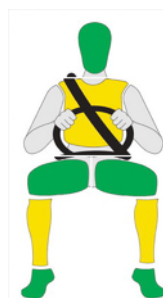
### Whiplash Protection Test.

Whiplash protection is assessed to the RCAR Protocol

Geometric test:	Good
Dynamic test:	Good
Overall whiplash rating:	Good

## Injury Outcomes.

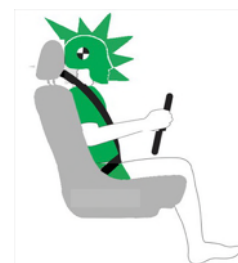
Frontal Offset  
Driver



Passenger



Side Impact & Pole  
Driver



Whiplash



# ANCAP Safety Rating SUBARU WRX (From 2014)



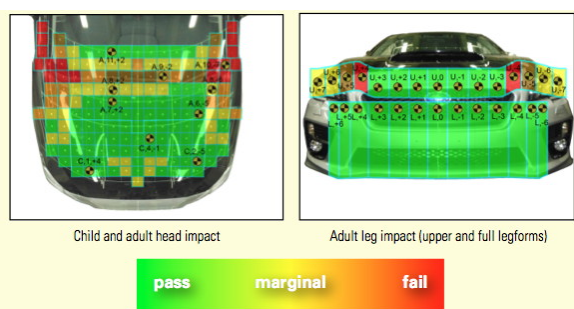
## PEDESTRIAN PROTECTION

### Pedestrian Test.

**GOOD** - Scored 28.31 out of 36 points

Child head impacts: 9.99 points  
 Adult head impacts: 8.26 points  
 Upper leg impacts: 4.06 points  
 Lower leg impacts: 6.00 points

Good protection is provided in most areas likely to be struck by a pedestrian.(v5.3)



Subaru WRX

## SAFETY FEATURES

These specifications are subject to change. Please check with manufacturer for the latest specifications. For a description of these safety features and safety rating requirements see the ANCAP Rating Road Map.

Safety Assist Technology (SAT)	Availability
Front airbag - driver	S
Front airbag - passenger	S
Side airbags (chest protection) - front seats	S
Side airbags (head protection) - front seats	S
Side airbags (head protection) - 2nd row seats	S
Knee airbag - driver	S
Three-point seat belts for all forward facing seats	S
Seat belt pretensioners (front / rear outboard)	S / X
Intelligent seat belt reminder - driver	S
Intelligent seat belt reminder - front passenger	S
Intelligent seat belt reminder - 2nd row seats	S
Head restraints for all seats	S
Antilock brakes (ABS)	S
Electronic brake distribution (EBD)	S
Emergency brake assist (EBA)	S
Electronic stability control (ESC)	S
Adaptive cruise control (ACC)	X
Autonomous emergency braking (AEB)	X
Lane support system	X
Fatigue reminder	S
Hill launch assist	S
Reversing collision avoidance	S
Automatic headlights	V

S = Standard on all variants.  
 O = Optional on base variant. May be standard on higher variants.  
 V = Not available on base variant but standard or optional on higher variants.  
 X = Not available on any variant.

## INJURY MEASUREMENTS

Body Region	Frontal offset test at 64 km/h (v5.1)		Side impact test at 50 km/h (v5.1)
	Driver	Passenger	Driver
<b>Head</b>			
HIC	278.00	275.00	40.00
Acceleration (g for 3ms)	40.30	44.70	21.60
<b>Neck</b>			
Shear (kN)	0.37	0.56	-
Tension (kN)	1.08	0.70	-
Extension (Nm)	11.40	26.70	-
<b>Chest</b>			
Acceleration (g for 3ms)	-	-	-
Compression (mm)	25.69	22.67	13.20
Viscous criterion (m/s)	0.08	0.09	0.09
<b>Abdomen</b>			
Force (kN)	-	-	0.67
<b>Pelvis</b>			
Force (kN)	-	-	1.11
<b>Upper legs</b>			
Femur force left (kN)	1.52	1.00	
Femur force right (kN)	1.34	2.16	
Knee displacement left (mm)	2.62	0.23	
Knee displacement right (mm)	4.21	0.74	
<b>Lower legs</b>			
Force left (kN)	2.34	2.58	
Force right (kN)	2.66	2.32	
Index (upper / lower) left	0.38 / 0.43	0.43 / 0.28	
Index (upper / lower) right	0.54 / 0.49	0.46 / 0.54	

## INTRUSION MEASUREMENTS

### Steering Column

Rearwards:	52mm
Upwards:	32mm
Sideways:	mm

### Pedals

Accelerator (rearwards):	47mm
Accelerator (upwards):	35mm

A-Pillar (rearwards):	3mm
-----------------------	-----

## SCORE DEDUCTIONS

### Deductions from frontal offset test scores

No deductions for offset test

### Deductions from side impact test score

No deductions for side impact test.

### Deductions from pole test score

No deductions for pole test.

\* For information about the application of ANCAP ratings to model variants see the ANCAP Variant Policy. In brief, ratings do not automatically extend to variants that have different body styles, engine configurations, driven wheels or occupant restraint systems (e.g. fewer airbags). In these cases ANCAP considers technical evidence submitted by manufacturers before deciding on extending a rating to additional variants of a model.

^ Refer ANCAP Rating Road Map ([www.ancap.com.au/media](http://www.ancap.com.au/media)).

DOCUMENT REF: WRX14  
 CREATED / REVISED: 20/2/104