

Crash Test Results

New Car Safety

SUBARU TRIBECA

2006 on

Front+side+head airbags



Offset crash test at 64km/h

FRONTAL OFFSET CRASH TEST (v4.1)

Body region scores out of 4 points each: Head/neck 4 pts, chest 1.96 pts, upper legs 4 pts, lower legs 3.11 pts.

The passenger compartment held its shape well in the offset crash test. The accelerator pedal moved rearwards by 82 mm and upwards 31 mm. The steering wheel hub moved forwards 5mm, upwards 41 mm and sideways 36 mm. The front ("A") pillar did not move rearwards. All doors remained closed during the crash. After the crash high manual effort was required to open the driver's door.


The airbag cushioned the head of the driver and contact was stable. There were no knee hazards. The passenger's head was cushioned by the airbag.

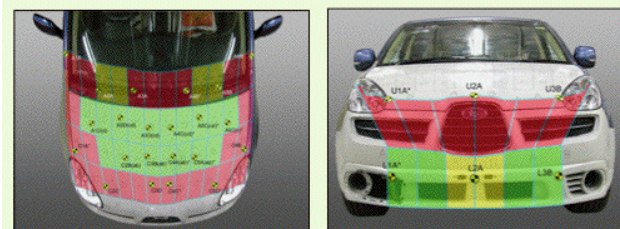
SIDE IMPACT CRASH TEST (v4.1)

Body region scores out of 4 points each: Head 4 pts, chest 4 pts, abdomen 4 pts, pelvis 4 pts.

The vehicle was eligible for an optional pole impact test, since it had head-protecting side airbags and scored four points for the head in the side impact test. The manufacturer decided to go ahead with the pole test and the vehicle earned a further two points.

PEDESTRIAN PROTECTION RATING (v4.1)

PEDESTRIAN PROTECTION		
 ANCAP Rated ★ ★ ★ ★	Child head impacts	4
	Adult head impacts	6.73
	Upper leg impacts	Zero
	Lower leg impacts	5.16
	Total (out of 36)	15.89



Child and adult head impact

Adult leg impact (upper and full legforms)

pass marginal fail



Occupant Protection Score 33.07 out of 37

Variant: wagon

Eng: 3 litre V6, 5 speed auto

Kerb weight: 1900 kg

Category: 4WD - Large

Vehicles built: 2006

Model History and Safety Features

The tested model of Subaru Tribeca was introduced in Australia during 2006.

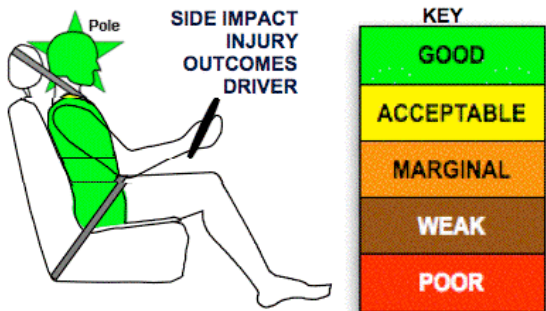
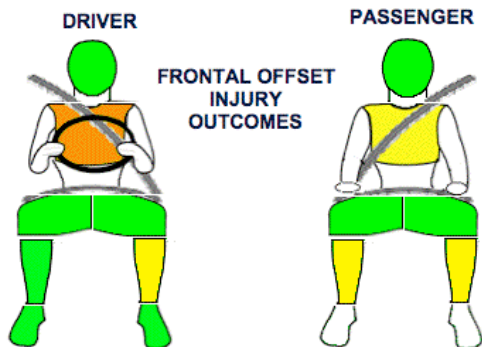
Dual front airbags, side airbags and head-protecting side curtains are standard equipment. Antilock brakes (ABS), electronic brake distribution (EBD) and electronic stability control (ESC) and a rear vision camera are also standard. Advanced seat belt reminders are fitted to both front seats.

The front seat belt buckles are mounted on the seats and the upper anchorages are adjustable. These features improve the fit of the seat belt. Pretensioners are fitted to the front seat belts to reduce slack in the event of a crash. A three point seat belt is fitted to the centre rear seat. This provides better protection than a two point (lap) seat belt.

OCCUPANT PROTECTION: 5 Stars

The Subaru Tribeca scored 13.07 out of 16 in the offset crash test. The passenger compartment held its shape well. Protection from serious chest injury was marginal for the driver.

The vehicle scored 16 out of 16 in the side impact crash test and a further two points in the optional pole test.



Sept 2007

PO Box 1555

Canberra ACT

Australia 2601

tribeca06.doc

Updated 16/11/07



ANCAP

Crash testing for safety

AUSTRALASIAN
NEW CAR ASSESSMENT
PROGRAM

www.ancap.com.au

TECHNICAL DATA - SUBARU TRIBECA - 2006 on

INJURY MEASUREMENTS

Body region	Offset Crash Test at 64km/h (v4.1)		Side Impact Crash Test at 50km/h (v4.1)
	Driver	Passenger	Driver
Head HIC	411	348	44
Acceleration (g for 3ms)	49.0	48.0	21.9
Neck - Shear (kN)	0.34	0.35	-
Tension (kN)	1.16	1.01	-
Extension (Nm)	25.9	21.7	-
Chest Accln (g for 3ms)	39.90	34.90	-
Compression (mm)	36.30	25.40	16.00
Viscous criterion (m/s)	0.19	0.08	0.08
Abdomen - Force (kN)	-	-	0.330
Pelvis - Force (kN)	-	-	1.280
Upper legs Force			
Left (kN)	0.46	0.41	
Right (kN)	0.02	0.20	
Knee displ (mm)			
Left	0.96	0.06	
Right	0.44	0.03	
Lower legs Force			
Left (kN)	1.50	2.04	
Right (kN)	1.20	1.53	
Index (Upper/Low)			
Left	0.44 /0.60	0.49 /0.36	
Right	0.39 /0.36	0.56/0.53	

Bonus points (maximum 5)

Pole Test: 2 pts

Seat belt reminders: 2 (see table below for details)

Modifiers - deductions from offset test scores

Head	No deduction
Chest	No deduction
Upper leg	No deduction
Lower leg	No deduction

Foot score Score 4 points

Note: Steering column and pedal movements are measured relative to the driver's seat.

Modifiers - deductions from side impact test scores

Chest	No deduction
-------	--------------

Safety features

These specifications are subject to change. Please check with manufacturer for the latest specifications.



Driver airbag	S	Antilock (ABS) brakes / Electronic brake distribution	S/S
Passenger front airbag	S	Electronic stability control (ESC, VSC, DSC, ESP, VSA)	S
Side airbags, front seats - chest protection	S	3 point centre rear seat belt	S
Side airbags, front seats - head protection	S	Active head restraints - front seats	S
Side airbags, rear seats - head protection	S	Intelligent seat belt reminder - driver	S
Driver knee airbag	X	Intelligent seat belt reminder - front passenger	S
Front seat belt pretensioners	S	Rear seat belt status indicator	X

Key:

S = standard on all variants

O = optional on base variant. May be standard on higher variants

V= not available on base variant but standard or optional on higher variants

X = not available on any variant