

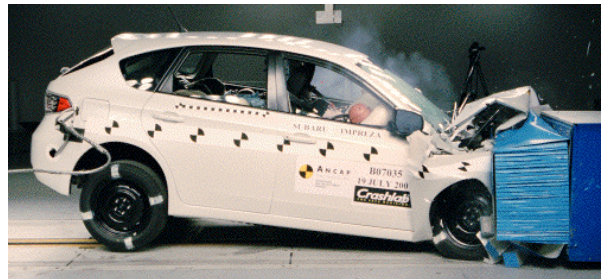
Crash Test Results

New Car Safety

SUBARU IMPREZA

Sep 07 on

Front+side+head airbags



Offset crash test at 64km/h



ANCAP
Rated ★★★★★

Occupant Protection

Occupant Protection Score 34.66 out of 37

Variant: 5dr hatch

Eng: 2 litre

Kerb weight: 1380 kg

Category: SMALL CAR

Vehicles built: 7/07

Model History and Safety Features

The tested model of Subaru Impreza was launched in Australia in September 2007.

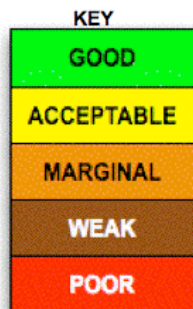
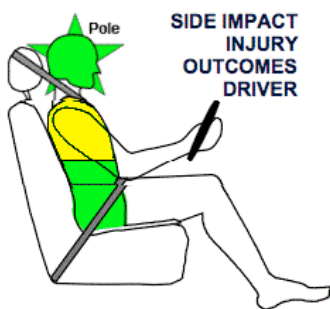
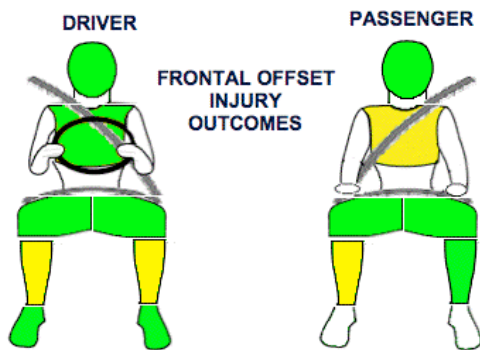
Dual front airbags, side airbags and head-protecting side curtains are standard equipment. Antilock brakes (ABS), electronic brake distribution (EBD) and electronic stability control (ESC) are also standard. Advanced seat belt reminders are fitted to both front seats.

The front seat belt buckles are mounted on the seats and the upper anchorages are adjustable. These features improve the fit of the seat belt. Pre-tensioners are fitted to the front seat belts to reduce slack in the event of a crash. A three point seat belt is fitted to the centre rear seat. This provides better protection than a two point (lap) seat belt.

OCCUPANT PROTECTION: 5 Stars

The Subaru Impreza scored 14.93 out of 16 in the offset crash test. The passenger compartment held its shape well. There was a slight chest of serious chest injury for the passenger and a slight risk of serious lower leg injury for the driver and passenger.

The vehicle scored 15.73 out of 16 in the side impact crash test. There was a slight risk of serious chest injury for the driver. A further two points were scored in the optional pole test.



FRONTAL OFFSET CRASH TEST (v4.1)

Body region scores out of 4 points each: Head/neck 4 pts, chest 3.91 pts, upper legs 4 pts, lower legs 3.02 pts.

The passenger compartment held its shape well in the offset crash test. The accelerator pedal moved rearwards by 88 mm and upwards 57 mm. The steering wheel hub moved forwards 34mm and upwards 5 mm. The front ("A") pillar moved 1 mm rearwards. All doors remained closed during the crash and could be opened with normal effort after the crash.

The airbag cushioned the head of the driver and contact was stable. There were no knee hazards. The passenger's head was cushioned by the airbag.

SIDE IMPACT CRASH TEST (v4.1)

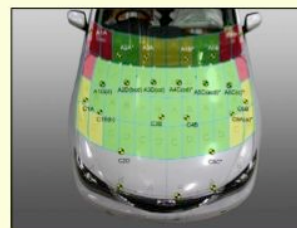
Body region scores out of 4 points each: Head 4 pts, chest 3.73 pts, abdomen 4 pts, pelvis 4 pts.

The vehicle was eligible for an optional pole impact test, since it had head-protecting side airbags and scored four points for the head in the side impact test. The manufacturer decided to go ahead with the pole test and the vehicle earned a further two points.

PEDESTRIAN PROTECTION RATING (v4.1)

This is the first vehicle tested by ANCAP to achieve a four star rating - the maximum available for pedestrian protection.

PEDESTRIAN PROTECTION		
<p>Rated ★★★★★</p>	Child head impacts	10.53
	Adult head impacts	8.94
	Upper leg impacts	2.29
	Lower leg impacts	6
	Total (out of 36)	27.76



Child and adult head impact



Adult leg impact (upper and full legforms)

pass marginal fail

Sept 2007

PO Box 1555
Canberra ACT
Australia 2601
impreza07.doc
Issued 20/8/07



ANCAP

Crash testing for safety

AUSTRALASIAN
NEW CAR ASSESSMENT
PROGRAM

www.ancap.com.au

TECHNICAL DATA - SUBARU IMPREZA - September 07 on

INJURY MEASUREMENTS

Body region	Offset Crash Test at 64km/h (v4.1)		Side Impact Crash Test at 50km/h (v4.1)
	Driver	Passenger	Driver
Head HIC	256	316	45
Acceleration (g for 3ms)	38.9	45.5	21.5
Neck - Shear (kN)	0.44	0.94	-
Tension (kN)	1.13	1.46	-
Extension (Nm)	6.6	30.3	-
Chest Accln (g for 3ms)	37.40	43.60	-
Compression (mm)	16.20	22.66	13.30
Viscous criterion (m/s)	0.04	0.07	0.06
Abdomen - Force (kN)	-	-	0.840
Pelvis - Force (kN)	-	-	1.200
Upper legs Force			
(kN) Left	1.24	0.33	
Right	0.32	0.64	
Knee displ (mm)			
Left	0.42	0.65	
Right	1.10	5.96	
Lower legs Force			
(kN) Left	1.77	1.28	
Right	1.58	1.44	
Index (Upper/Low)			
Left	0.45 /0.62	0.40 /0.16	
Right	0.41 /0.39	0.41/0.37	

Bonus points (maximum 5)

Pole Test: 2 pts

Seat belt reminders: 2 (see table below for details)

Modifiers - deductions from offset test scores

Head No deduction
 Chest No deduction
 Upper leg Variable & conc. loading No deduction
 Lower leg No deduction
 Foot score Score 4 points

Note: Steering column and pedal movements are measured relative to the driver's seat.



Modifiers - deductions from side impact test scores

Chest Backplate load 0.27 pt deduction

Safety features

These specifications are subject to change. Please check with manufacturer for the latest specifications.

Driver airbag	S	Antilock (ABS) brakes / Electronic brake distribution	S/S
Passenger front airbag	S	Electronic stability control (ESC, VSC, DSC, ESP, VSA)	S
Side airbags, front seats - chest protection	S	3 point centre rear seat belt	S
Side airbags, front seats - head protection	S	Active head restraints - front seats	S
Side airbags, rear seats - head protection	S	Intelligent seat belt reminder - driver	S
Driver knee airbag	X	Intelligent seat belt reminder - front passenger	S
Front seat belt pretensioners	S	Rear seat belt status indicator	X

Key:

S = standard on all variants

O = optional on base variant. May be standard on higher variants

V= not available on base variant but standard or optional on higher variants

X = not available on any variant