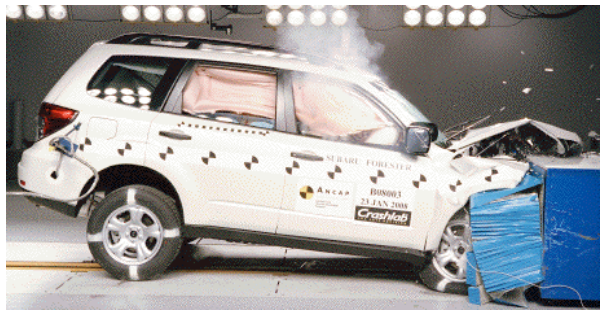


# Crash Test Results

## New Car Safety

### SUBARU FORESTER

2008 on Front + side & head airbags



Offset crash test at 64km/h

#### FRONTAL OFFSET CRASH TEST (v4.1)

Body region scores out of 4 points each: Head/neck 4 pts, chest 4 pts, upper legs 4 pts, lower legs 2.31 pts.

The passenger compartment held its shape well in the offset crash test. The accelerator pedal moved rearwards by 111 mm and upwards 39 mm. The steering wheel hub moved 39mm forward, 24 mm upward and 33 mm sideways. The front ("A") pillar did not move rearwards. All doors remained closed during the crash. After the crash the driver's door could be opened with normal effort.

The airbag cushioned the head of the driver and contact was stable. There were no knee hazards. The passenger's head was cushioned by the airbag.

#### SIDE IMPACT CRASH TEST (v4.1)

Body region scores out of 4 points each: Head 4 pts, chest 4 pts, abdomen 4 pts, pelvis 4 pts.

The vehicle was eligible for an optional pole impact test, since it had head-protecting side airbags and scored four points for the head in the side impact test. The manufacturer decided to go ahead with the pole test and the vehicle earned a further two points.

#### PEDESTRIAN PROTECTION: 3 Stars

A reasonably good result for the Forester. The adult head region performed well. Most of the child head region performed marginally, as did the full leg region. The upper leg tests were uniformly poor.



**ANCAP** Occupant Protection  
Rated ★★★★★

**Occupant Protection Score** 34.31 out of 37

Variant: 2.5 X

Eng: 2.5 litre

Kerb weight: 1470 kg

Category: 4WD - COMPACT

Vehicles built: 12/2007

#### Model History and Safety Features

The tested model of Subaru Forester was introduced in Australia in March 2008. It is due to be released in New Zealand in the 2nd quarter of 2008.

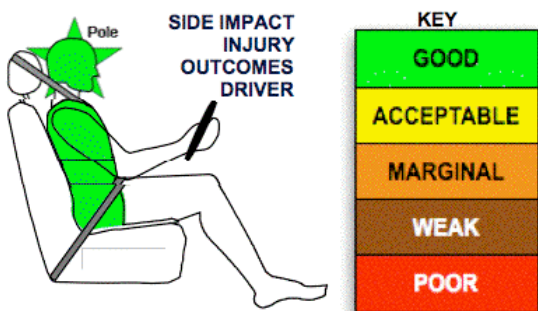
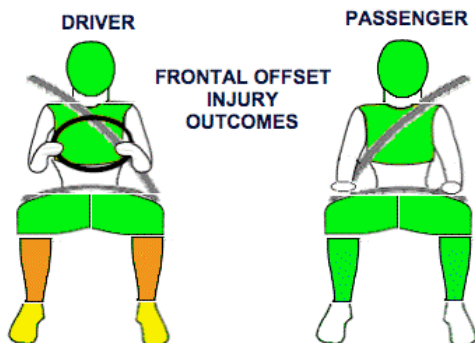
Dual front airbags, side airbags and head-protecting side curtains are standard equipment. Antilock brakes (ABS), electronic brake distribution (EBD) and electronic stability control (ESC) are also standard. Advanced seat belt reminders are fitted to both front seats.


The front seat belt buckles are mounted on the seats and the upper anchorages are adjustable. These features improve the fit of the seat belt. Pretensioners are fitted to the front seat belts to reduce slack in the event of a crash. A three point seat belt is fitted to the centre rear seat. This provides better protection than a two point (lap) seat belt.

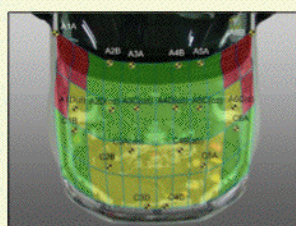
#### OCCUPANT PROTECTION: 5 Stars

The Subaru Forester scored 14.31 out of 16 in the offset crash test. The passenger compartment held its shape extremely well. Protection from serious lower leg injury was marginal for the driver.


The vehicle scored 16 out of 16 in the side impact crash test and a further 2 points in the optional pole test.



PEDESTRIAN PROTECTION		
 <p>Rated ★★☆☆</p> <p>v4.1</p>	Child head impacts	8.33
	Adult head impacts	8.67
	Upper leg impacts	Zero
	Lower leg impacts	1.76
	<b>Total (out of 36)</b>	<b>18.75</b>



Child and adult head impact



Adult leg impact (upper and full legforms)

pass
marginal
fail

**March 2008**

PO Box 1555

Canberra ACT Australia  
2601

forester08.doc

Issued 25/2/2008



**ANCAP**  
Crash testing for safety

AUSTRALASIAN  
NEW CAR ASSESSMENT  
PROGRAM

# TECHNICAL DATA - SUBARU FORESTER - March 2008 on

## INJURY MEASUREMENTS

Body region	Offset Crash Test at 64km/h (v4.1)		Side Impact Crash Test at 50km/h (v4.1)
	Driver	Passenger	Driver
<b>Head HIC</b>	151	146	34
Acceleration (g for 3ms)	31.8	32.0	21.6
<b>Neck - Shear (kN)</b>	0.24	0.67	-
Tension (kN)	0.98	1.03	-
Extension (Nm)	13.6	13.3	-
<b>Chest Accln (g for 3ms)</b>	33.200	30.400	-
Compression (mm)	20.30	17.20	8.00
Viscous criterion (m/s)	0.06	0.06	0.05
<b>Abdomen - Force (kN)</b>	-	-	0.340
<b>Pelvis - Force (kN)</b>	-	-	0.700
<b>Upper legs Force (kN)</b>			
Left	0.44	0.49	
Right	0.48	1.42	
<b>Knee displ (mm)</b>			
Left	1.10	0.00	
Right	1.19	0.17	
<b>Lower legs Force (kN)</b>			
Left	2.10	1.12	
Right	1.32	1.40	
<b>Index (Upper/Low)</b>			
Left	0.37 /0.77	0.31 /0.18	
Right	0.35 /0.78	0.3/0.29	

### Bonus points (maximum 5)

Pole Test: 2 pts

Seat belt reminders: 2 (see table below for details)

### Modifiers - deductions from offset test scores

Head No deduction  
 Chest No deduction  
 Upper leg Variable & conc. loading No deduction  
 Lower leg No deduction  
 Foot score Pedal movement Score 3.56 points

Note: Steering column and pedal movements are measured relative to the driver's seat.

### Modifiers - deductions from side impact test scores

Chest No deduction

### Safety features

These specifications are subject to change. Please check with manufacturer for the latest specifications.



Driver airbag	S	Antilock (ABS) brakes / Electronic brake distribution / Brake Assist	S/S/S
Passenger front airbag	S	Electronic stability control (ESC, VSC, DSC, ESP, VSA)	S#
Side airbags, front seats - chest protection	S	3 point centre rear seat belt	S
Side airbags, front seats - head protection	S	Active head restraints - front seats	S
Side airbags, rear seats - head protection	S	Intelligent seat belt reminder - driver	S
Driver knee airbag	X	Intelligent seat belt reminder - front passenger	S
Front seat belt pretensioners	S	Rear seat belt status indicator	X

Key:

S = standard on all variants

O = optional on base variant. May be standard on higher variants

V= not available on base variant but standard or optional on higher variants

X = not available on any variant

# ESC required by ANCAP for 5 star rating from 2008