

Crash Test Results

New Car Safety

SUBARU LIBERTY EXIGA

2009 on

Front+side+head airbags



ANCAP
Rated ★★★★★

Occupant Protection

Occupant Protection Score 33.31 out of 37

Variant: -

Eng: 2.5

Kerb weight: 1560 kg

Category: CAR - MEDIUM

Vehicles built: 2009

Model History and Safety Features

The tested model of Subaru Liberty Exiga was introduced in Australia in 2009.

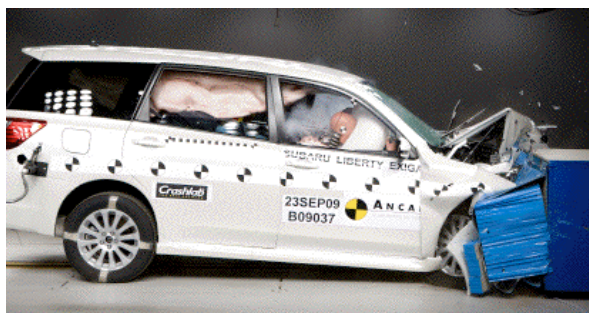
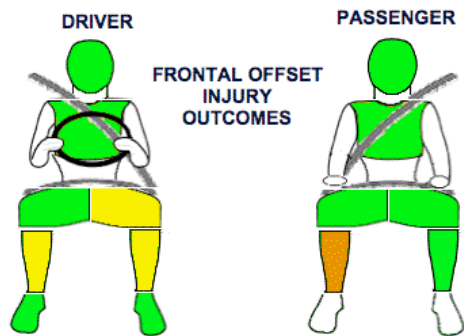
Dual front airbags, side airbags and head-protecting side curtains are standard equipment. Antilock brakes (ABS), electronic brake distribution (EBD) and electronic stability control (ESC) are also standard. Advanced seat belt reminders are fitted to both front seats.

Pretensioners are fitted to the front seat belts to reduce slack in the event of a crash. All six seats have three point seat belts. Two child restraint top tether anchorages are provided.

OCCUPANT PROTECTION: 5 Stars

The Exiga scored 13.31 out of 16 in the offset crash test. The passenger compartment held its shape well. Protection from serious leg injury was marginal for the passenger.

The vehicle scored 16 out of 16 in the side impact crash test and a further two points in the optional pole test.



Offset crash test at 64km/h

FRONTAL OFFSET CRASH TEST (v4.1)

Body region scores out of 4 points each: Head/neck 4 pts, chest 4 pts, upper legs 3 pts, lower legs 2.31 pts.

The passenger compartment held its shape well in the offset crash test. The accelerator pedal moved rearwards by 89 mm and upwards 38 mm. The steering wheel hub moved 19mm forward, 9 mm upward and 35 mm sideways. The front ("A") pillar moved 4 mm rearwards. All doors remained closed during the crash. After the crash the all doors could be opened with normal effort.

The airbag cushioned the head of the driver and contact was stable. Steering column components were a potential source of injury for the driver's left knee. The passenger's head was cushioned by the airbag.

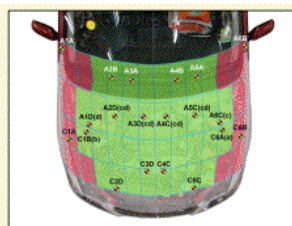
SIDE IMPACT CRASH TEST (v4.1)

Body region scores out of 4 points each: Head 4 pts, chest 4 pts, abdomen 4 pts, pelvis 4 pts.

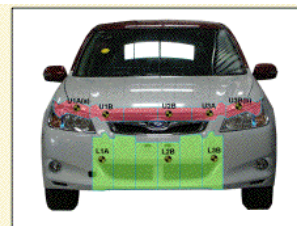
The vehicle was eligible for an optional pole impact test. The manufacturer decided to go ahead with this test and the vehicle earned a further two points.

PEDESTRIAN PROTECTION: 3 Stars

PEDESTRIAN PROTECTION		
 v4.1	Child head impacts	9
	Adult head impacts	9
	Upper leg impacts	Zero
	Lower leg impacts	6
	Total (out of 36)	24



Child and adult head impact



Adult leg impact (upper and full legforms)

pass marginal fail

October 2009

PO Box 4041

Manuka ACT 2603

exiga09.doc

Issued 27/10/2009



ANCAP

Crash testing for safety

AUSTRALASIAN
NEW CAR ASSESSMENT
PROGRAM

TECHNICAL DATA - SUBARU LIBERTY EXIGA - 2009 on

INJURY MEASUREMENTS

Body region	Offset Crash Test at 64km/h (v4.1)		Side Impact Crash Test at 50km/h (v4.1)
	Driver	Passenger	Driver
Head HIC	202	152	30
Acceleration (g for 3ms)	36.8	32.9	20.7
Neck - Shear (kN)	0.24	0.68	-
Tension (kN)	1.46	1.01	-
Extension (Nm)	19.3	21.4	-
Chest Accln (g for 3ms)	34.800	37.400	-
Compression (mm)	20.90	19.40	10.60
Viscous criterion (m/s)	0.06	0.06	0.09
Abdomen - Force (kN)	-	-	0.690
Pelvis - Force (kN)	-	-	1.330
Upper legs Force (kN)			
Left	1.45	0.53	
Right	0.23	1.77	
Knee displ (mm)			
Left	1.20	0.02	
Right	0.47	0.03	
Lower legs Force (kN)			
Left	2.00	1.38	
Right	3.84	1.72	
Index (Upper/Low)			
Left	0.68 /0.67	0.39 /0.31	
Right	0.61 /0.62	0.78/0.43	

Bonus points (maximum 5)

Pole Test: 2 pts

Seat belt reminders: 2 (see table below for details)

Modifiers - deductions from offset test scores

Head No deduction
 Chest No deduction
 Upper leg Concentrated. loading 1 pt deduction Left
 Lower leg No deduction
 Foot score Score 4 points

Note: Steering column and pedal movements are measured relative to the driver's seat.

Modifiers - deductions from side impact test scores

Chest No deduction

Safety features

These specifications are subject to change. Please check with manufacturer for the latest specifications.



Driver airbag	S	Antilock (ABS) brakes / Electronic brake distribution / Brake Assist	S/S/S
Passenger front airbag	S	Electronic stability control (ESC, VSC, DSC, ESP, VSA)	S#
Side airbags, front seats - chest protection	S	3 point centre rear seat belt	Not applic
Side airbags, front seats - head protection	S	Active head restraints - front seats	X
Side airbags, rear seats - head protection	S (2 rows)	Intelligent seat belt reminder - driver	S
Driver knee airbag	X	Intelligent seat belt reminder - front passenger	S
Seat belt pretensioners (Front/rear outboard)	S/X	Rear seat belt status indicator	X

Key:

S = standard on all variants

O = optional on base variant. May be standard on higher variants

V= not available on base variant but standard or optional on higher variants

X = not available on any variant

ESC required by ANCAP for 5 star rating from 2008