

Crash Test Results

New Car Safety

SKODA YETI

From 2011 Front+side+head+knee airbags



Offset crash test at 64km/h



ANCAP Occupant Protection
Rated ★★★★★

Occupant Protection Score 34.67 out of 37

Variant: 4x4

Eng: 2 litre diesel

Kerb mass 1550 kg

Category: SUV - COMPACT

Vehicles built: 2009

Tested by Euro NCAP

Important note: The AWD diesel left-hand-drive European model was tested by Euro NCAP. Australasian specifications may vary and therefore models sold in Australasia might provide different levels of protection to those described on this page.

Model History and Safety Features

The tested model of Skoda Yeti was introduced in Australia and New Zealand during 2011. This ANCAP rating applies to the all-wheel-drive diesel variant. Further technical information is being sought about other variants.

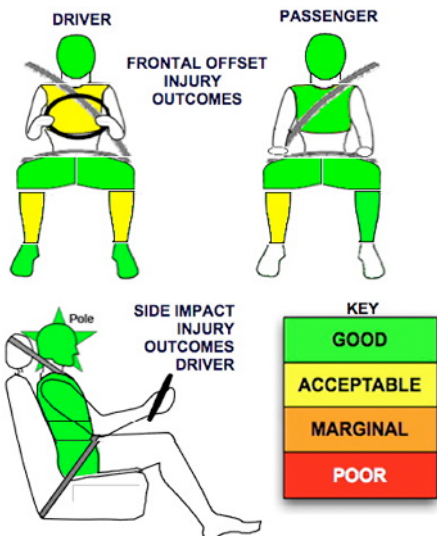
Dual front airbags, side airbags, head-protecting side curtains and a driver knee airbag are standard equipment. Antilock brakes (ABS), electronic brakeforce distribution (EBD) and electronic stability control (ESC) are also standard. Intelligent seat belt reminders are fitted to both front seats.

Pretensioners are fitted to the front seat belts to reduce slack in the event of a crash.

OCCUPANT PROTECTION: 5 Stars

The Yeti scored 14.67 out of 16 in the offset crash test. The passenger compartment held its shape well. There was a slight risk of serious chest injury for the driver and a slight risk of serious lower leg injury for the driver and passenger.

The vehicle scored 16 out of 16 in the side impact crash test and a further two points in the pole test.



FRONTAL OFFSET CRASH TEST

Body region scores out of 4 points each: Head/neck 4 pts, chest 3.56 pts, upper legs 4 pts, lower legs 3.11 pts.

The passenger compartment held its shape well in the offset crash test. The accelerator pedal moved rearwards by 19 mm and downwards 3mm. The steering wheel hub moved 52mm forward, 1 mm upward and 15 mm sideways. The front ("A") pillar moved 5 mm rearwards. All doors remained closed during the crash. After the crash all doors could be opened with normal effort.

The airbag cushioned the head of the driver and contact was stable. There were no knee hazards. The passenger's head was cushioned by the airbag.

SIDE IMPACT CRASH TEST

Body region scores out of 4 points each: Head 4 pts, chest 4 pts, abdomen 4 pts, pelvis 4 pts.

The side impact test simulates a small car striking the driver's door of the vehicle under test. It is based on a regulation test but the regulation does not apply to vehicles with a high seat height like the Yeti. Experience shows that such vehicles can be expected to perform well in this test and the Yeti scored full marks.

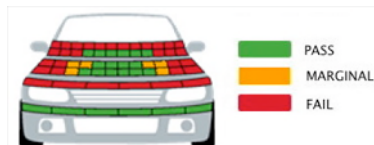
The vehicle was eligible for a pole impact test, since it had head-protecting side airbags. The vehicle earned the maximum two points in this test.

PEDESTRIAN PROTECTION: Marginal

The bumper scored maximum points for the protection offered to pedestrians' leg. The front edge of the bonnet performed poorly, scoring no points. Some parts of the bonnet offered good protection to the head of a pedestrian but most areas likely to be struck by an adult's head offered poor levels of protection.

PEDESTRIAN PROTECTION	Child head impacts	7.72
MARGINAL	Adult head impacts	3
	Upper leg impacts	Zero
	Lower leg impacts	6
	Total (out of 36)	16.72

Tested by Euro NCAP v5



NOVEMBER 2011

PO Box 4041

Manuka ACT 2603

yeti11.doc

Issued 28/10/2011



ANCAP

Crash testing for safety

AUSTRALASIAN
NEW CAR ASSESSMENT
PROGRAM

TECHNICAL DATA - SKODA YETI - From 2011

INJURY MEASUREMENTS

Body region	Offset Crash Test at 64km/h (v5.0)		Side Impact Crash Test at 50km/h (v5.0)
	Driver	Passenger	Driver
Head HIC	409	393	42
Acceleration (g for 3ms)	51.0	45.5	19.9
Neck - Shear (kN)	0.31	0.58	-
Tension (kN)	1.70	1.28	-
Extension (Nm)	15.6	27.7	-
Chest Accln (g for 3ms)	-	-	-
Compression (mm)	25.09	19.76	11.92
Viscous criterion (m/s)	0.13	0.05	0.06
Abdomen - Force (kN)	-	-	0.540
Pelvis - Force (kN)	-	-	1.420
Upper legs Force (kN)			
Left	1.30	0.60	
Right	1.41	0.40	
Knee displ (mm)			
Left	2.80	0.20	
Right	3.90	0.00	
Lower legs Force (kN)			
Left	2.00	1.55	
Right	1.85	3.33	
Index (Upper/Low)			
Left	0.30 /0.50	0.34 /0.18	
Right	0.45 /0.30	0.48/0.45	

Bonus points (maximum 5)

Pole Test: 2 pts

Seat belt reminders: 2 (see table below for details)

Modifiers - deductions from offset test scores

Head	No deduction
Chest	No deduction
Upper leg	No deduction
Lower leg	No deduction
Foot score	Score 4 points

Modifiers - deductions from side impact test scores

Chest	No deduction
-------	--------------

Safety features

These specifications are subject to change. Please check with manufacturer for the latest specifications.

Driver airbag	S	Antilock (ABS) brakes / Electronic brake distribution / Brake Assist	S/S/X
Passenger front airbag	S	Electronic stability control (ESC, VSC, DSC, ESP, VSA)	S#
Side airbags, front seats - chest protection	S	3 point seat belt for all forward-facing seats	S
Side airbags, front seats - head protection	S	Whiplash protection (RCAR protocol)	Pending
Side airbags, rear seats - head protection		Intelligent seat belt reminder - driver	S
Driver knee airbag	S	Intelligent seat belt reminder - front passenger	S
Seat belt pretensioners (Front/Rear outboard)	S/X	Intelligent seat belt reminder - rear seats	X

Key:

S = standard on all variants

O = optional on base variant. May be standard on higher variants

V= not available on base variant but standard or optional on higher variants

X = not available on any variant

ESC required by ANCAP for 5 star rating from 2008

