

Crash Test Results

New Car Safety

SKODA ROOMSTER (LHD)

2007 on

Front+side+head airbags



Offset crash test at 64km/h

FRONTAL OFFSET CRASH TEST (v4.1)

Body region scores out of 4 points each: Head/neck 4 pts, chest 3.82 pts, upper legs 2 pts, lower legs 4 pts.

The passenger compartment held its shape well in the offset crash test. The brake pedal moved rearwards by 33 mm and downwards 8mm. The steering wheel hub moved 25mm forward, 5mm upwards and 14mm sideways. The front ("A") pillar moved 5 mm rearwards. All doors remained closed during the crash. After the crash all doors could be opened with normal effort.


The airbag cushioned the head of the driver and contact was stable. Steering column and dash components were a potential source of injury for the driver's knees. The passenger's head was cushioned by the airbag.

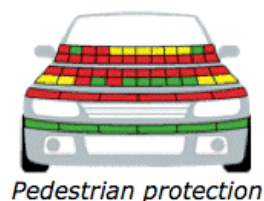
SIDE IMPACT CRASH TEST (v4.1)

Body region scores out of 4 points each: Head 4 pts, chest 4 pts, abdomen 4 pts, pelvis 4 pts.

The vehicle was eligible for an optional pole impact test, since it had head-protecting side airbags and scored four points for the head in the side impact test. The manufacturer decided to go ahead with the pole test and the vehicle earned a further two points.

PEDESTRIAN PROTECTION RATING (v4.1)

PEDESTRIAN PROTECTION		
 ANCAP Rated ★ ★ ★ ★ Tested by Euro NCAP	Child head impacts	4.64
	Adult head impacts	2.94
	Upper leg impacts	Zero
	Lower leg impacts	6
	Total (out of 36)	13.58



■ GOOD
■ ADEQUATE
■ MARGINAL

Pedestrian protection


ANCAP Occupant Protection
 Rated ★ ★ ★ ★ ★

Occupant Protection Score 33.82 out of 37

Variant: - Eng: 1.9 litre diesel
 Kerb weight: 1180 kg Category: MEDIUM CAR/MPV
 Vehicles built: 2006 Tested by Euro NCAP

Important note: The *diesel left-hand-drive* European model was tested by Euro NCAP. Australasian specifications may vary and therefore models sold in Australasia might provide different levels of protection to those described on this page.

Model History and Safety Features

The tested model of Skoda Roomster was introduced in Australia and New Zealand during 2007.

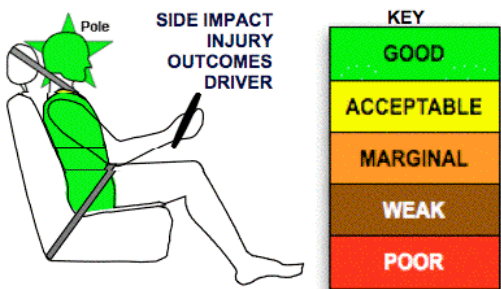
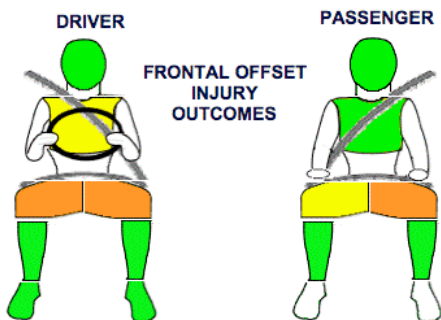
Dual front airbags, side airbags and head-protecting side curtains are standard equipment. Antilock brakes (ABS), electronic brake distribution (EBD) and electronic stability control (ESC) are also standard. Intelligent seat belt reminders are fitted to both front seats.

The front seat belt buckles are mounted on the seats and the upper anchorages are adjustable. These features improve the fit of the seat belt. Pretensioners are fitted to the front seat belts to reduce slack in the event of a crash. A three point seat belt is fitted to the centre rear seat. This provides better protection than a two point (lap) seat belt.

OCCUPANT PROTECTION: 5 Stars

The Skoda Roomster scored 13.82 out of 16 in the offset crash test. The passenger compartment held its shape well. Protection from serious leg injury was marginal for the driver.

The vehicle scored 16 out of 16 in the side impact crash test and a further two points in the optional pole test.



November 2007

PO Box 1555
 Canberra ACT Australia
 2601
 roomster07.doc
 Issued 9/11/07



ANCAP

Crash testing for safety

AUSTRALASIAN
NEW CAR ASSESSMENT
PROGRAM

TECHNICAL DATA - SKODA ROOMSTER (LHD) - 2007 on

INJURY MEASUREMENTS

Body region	Offset Crash Test at 64km/h (v4.1)		Side Impact Crash Test at 50km/h (v4.1)
	Driver	Passenger	Driver
Head HIC	247	288	68
Acceleration (g for 3ms)	37.1	43.9	26.3
Neck - Shear (kN)	0.37	0.45	-
Tension (kN)	1.30	0.79	-
Extension (Nm)	24.6	14.5	-
Chest Accln (g for 3ms)	-	-	-
Compression (mm)	23.26	19.49	20.37
Viscous criterion (m/s)	0.07	0.06	0.12
Abdomen - Force (kN)	-	-	0.730
Pelvis - Force (kN)	-	-	2.110
Upper legs Force (kN)			
Left	1.45	1.83	
Right	1.08	0.12	
Knee displ (mm)			
Left	0.00	1.80	
Right	0.00	0.50	
Lower legs Force (kN)			
Left	0.78	1.32	
Right	1.43	1.09	
Index (Upper/Low)			
Left	0.26 /0.18	0.24 /0.15	
Right	0.21 /0.33	0.23/0.25	

Bonus points (maximum 5)

Pole Test: 2 pts

Seat belt reminders: 2 (see table below for details)

Modifiers - deductions from offset test scores

Head	No deduction
Chest	No deduction
Upper leg Variable & conc. loading	2 pt deduction Left & Right
Passenger knee hazards	2 pt deduction L, 1 pt right
Lower leg	No deduction
Foot score	Score 4 points

Modifiers - deductions from side impact test scores

Chest	No deduction
-------	--------------

Safety features

These specifications are subject to change. Please check with manufacturer for the latest specifications.



Driver airbag	S	Antilock (ABS) brakes / Electronic brake distribution	S
Passenger front airbag	S	Electronic stability control (ESC, VSC, DSC, ESP, VSA)	S
Side airbags, front seats - chest protection	S	3 point centre rear seat belt	S
Side airbags, front seats - head protection	S	Active head restraints - front seats	X
Side airbags, rear seats - head protection	S	Intelligent seat belt reminder - driver	S
Driver knee airbag	X	Intelligent seat belt reminder - front passenger	S
Front seat belt pretensioners	S	Rear seat belt status indicator	X

Key:

S = standard on all variants

O = optional on base variant. May be standard on higher variants

V= not available on base variant but standard or optional on higher variants

X = not available on any variant