

# Crash Test Results

## New Car Safety

### SKODA FABIA

New Zealand

2008 on

Front+side+head airbags



Offset crash test at 64km/h

#### FRONTAL OFFSET CRASH TEST (v4.1)

Body region scores out of 4 points each: Head/neck 4 pts, chest 3.38 pts, upper legs 2 pts, lower legs 3.47 pts.

The passenger compartment held its shape well in the offset crash test. The accelerator pedal moved rearwards by 17 mm. The clutch pedal moved downwards 2mm. The steering wheel hub moved 43mm forward, 3mm downward and 4 mm sideways. The front ("A") pillar moved 4 mm rearwards. All doors remained closed during the crash. After the crash all doors could be opened with normal effort.

The airbag cushioned the head of the driver and contact was stable. Steering column and dash components were a potential source of injury for the driver's knees. The passenger's head was cushioned by the airbag. The glove box and centre console were a knee hazard for the passenger.

#### SIDE IMPACT CRASH TEST (v4.1)


Body region scores out of 4 points each: Head 4 pts, chest 4 pts, abdomen 4 pts, pelvis 4 pts.

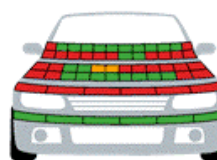
A rear door partially opened during the side impact test, resulting in a 1 point deduction.

In Europe the vehicle was eligible for an optional pole impact test and this was successfully conducted, with 2 points scored. However ANCAP only counts the pole test score for potential 5 star ratings and the Fabia is not eligible.

#### PEDESTRIAN PROTECTION: 2 Stars

The bumper scored maximum points for the protection it offered to pedestrians' legs. However, the front edge of the bonnet scored no points.

PEDESTRIAN PROTECTION		
 <b>ANCAP</b> Rated ★ ★ ★ ★ ★ Tested by Euro NCAP v4.1	Child head impacts	5.02
	Adult head impacts	6
	Upper leg impacts	Zero
	Lower leg impacts	6
	Total (out of 36)	17.02



Pedestrian protection

GOOD  
ADEQUATE  
MARGINAL



**Occupant Protection Score 28.84 out of 37**

Variant: 5 door hatch

Eng: 1.2

Kerb weight: 1055 kg

Category: CAR - SMALL

Vehicles built: 2007

Tested by Euro NCAP

**Important note:** The 1.2 litre left-hand-drive European model was tested by Euro NCAP. Australasian specifications may vary and therefore models sold in Australasia might provide different levels of protection to those described on this page.

#### Model History and Safety Features

The tested model of Skoda Fabia was introduced in New Zealand during 2008. It is not sold in Australia.

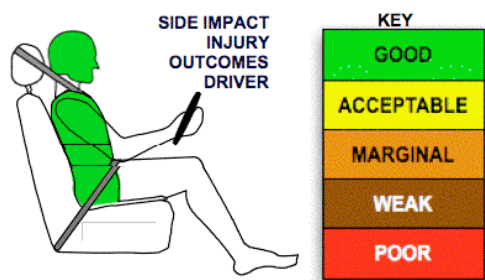
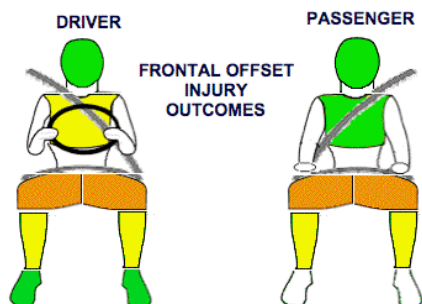
Dual front airbags, side airbags and head-protecting side curtains are standard equipment. Antilock brakes (ABS) are also standard. Electronic stability control (ESC) is optional on the 1.4 TDI and standard on the 1.6 Fabia. An intelligent seat belt reminder is fitted to driver seat.

The front seat belt buckles are mounted on the seats and the upper anchorages are adjustable. These features improve the fit of the seat belt. Pretensioners are fitted to the front seat belts to reduce slack in the event of a crash. A three point seat belt is fitted to the centre rear seat. This provides better protection than a two point (lap) seat belt.

#### OCCUPANT PROTECTION: 4 Stars

The SKODA FABIA scored 12.84 out of 16 in the offset crash test. The passenger compartment held its shape well. Protection from serious leg injury was marginal for the driver and passenger.

The vehicle scored 15 out of 16 in the side impact crash test.



July 2009

PO Box 4041

Manuka ACT 2603

fabia09nz.doc

Issued 10/7/2009



**ANCAP**

Crash testing for safety

AUSTRALASIAN  
NEW CAR ASSESSMENT  
PROGRAM

# TECHNICAL DATA - SKODA FABIA - 2008 on

## INJURY MEASUREMENTS

Body region	Offset Crash Test at 64km/h (v4.1)		Side Impact Crash Test at 50km/h (v4.1)
	Driver	Passenger	Driver
<b>Head HIC</b>	285	301	85
Acceleration (g for 3ms)	40.2	40.9	26.8
<b>Neck - Shear (kN)</b>	0.39	0.37	-
Tension (kN)	1.42	0.74	-
Extension (Nm)	16.0	10.2	-
<b>Chest Accln (g for 3ms)</b>	-	-	-
Compression (mm)	26.36	17.08	16.38
Viscous criterion (m/s)	0.10	0.06	0.09
<b>Abdomen - Force (kN)</b>	-	-	0.670
<b>Pelvis - Force (kN)</b>	-	-	2.230
<b>Upper legs Force (kN)</b>			
Left	0.92	1.65	
Right	1.56	1.08	
Knee displ (mm)			
Left	0.00	0.00	
Right	1.90	0.00	
<b>Lower legs Force (kN)</b>			
Left	1.71	2.28	
Right	2.61	2.58	
Index (Upper/Low)			
Left	0.49 /0.28	0.43 /0.14	
Right	0.26 /0.52	0.33/0.27	

### Bonus points (maximum 5)

Pole Test: Tested by Euro NCAP but not eligible for bonus points from ANCAP

Seat belt reminders: 1 (see table below for details)

### Modifiers - deductions from offset test scores

Head	No deduction
Chest	No deduction
Upper leg Variable & conc. loading for driver and passenger	2 pt deduction Left & Right
Lower leg	No deduction
Foot score	Score 4 points

### Modifiers - deductions from side impact test scores

Chest Door partially opened during crash 1 pt deduction

### Safety features (New Zealand)

These specifications are subject to change. Please check with manufacturer for the latest specifications.



Driver airbag	S	Antilock (ABS) brakes / Electronic brake distribution / Brake Assist	S/X/X
Passenger front airbag	S	Electronic stability control (ESC, VSC, DSC, ESP, VSA)	O#
Side airbags, front seats - chest protection	S	3 point centre rear seat belt	S
Side airbags, front seats - head protection	S	Active head restraints - front seats	X
Side airbags, rear seats - head protection	S	Intelligent seat belt reminder - driver	S
Driver knee airbag	X	Intelligent seat belt reminder - front passenger	X*
Seat belt pretensioners (Front/Rear outboard)	S	Rear seat belt status indicator	X

Key: \* A passenger seat belt reminder earned a bonus point from Euro NCAP

S = standard on all variants

O = optional on base variant. May be standard on higher variants

V= not available on base variant but standard or optional on higher variants

X = not available on any variant

# ESC required by ANCAP for 5 star rating from 2008