

ANCAP Safety Rating SSANGYONG STAVIC (2013 onwards)



ANCAP

Safety ★★★★★



Test Vehicle(s).

Variant:	Ssangyong Stavic 7-seat 2WD
Kerb Mass:	2100 kg
Built:	2014
Engine:	2 litre diesel
Category:	People Mover
Variant Applicability*:	2WD variants only



Frontal offset test at 64 km/h

Airbags	ESC	Frontal Offset	Side Impact	Pole	Whiplash	Pedestrian	Seat Belt Reminders	Overall Score	ANCAP Safety Rating
Frontal + Side Chest	Standard	9.06 (out of 16)	15.49 (out of 16)	NOT TESTED	NOT TESTED	POOR	0 (out of 3)	24.55 (out of 37)	★★★★★

The tested model of Ssangyong Stavic was introduced in Australia and New Zealand in 2013. This ANCAP safety rating applies to 2WD variants only.

Dual frontal and side chest airbags are standard. Antilock brakes (ABS), electronic brake distribution (EBD) and electronic stability control (ESC) are also standard.

In the offset crash test driver chest, leg and foot protection was marginal. Passenger leg protection was also marginal in this test. In the side impact crash test driver chest protection was acceptable,

OCCUPANT PROTECTION

Frontal Offset Test.

Each body region is scored out of 4 points

Head / neck:	4.00 points
Chest:	1.73 points
Upper legs:	2.00 points
Lower legs:	1.32 points

In the offset crash test the passenger compartment lost structural integrity at the lower a-pillar. Brake pedal movement was excessive. Steering column components were a potential source of knee injury for the driver. Dash components were a potential source of knee injury for the passenger.

Side Impact Test.

Each body region is scored out of 4 points

Head:	4.00 points
Chest:	3.49 points
Abdomen:	4.00 points
Pelvis:	4.00 points

Mostly good protection was provided for the driver in the side impact test. However chest protection was acceptable.

Pole Test.

Scored out of 2 points

The vehicle was not eligible for a side pole test because it does not have head-protecting side airbags.

Whiplash Protection Test.

Not tested

Injury Outcomes.

Frontal Offset Driver

Passenger

Side Impact Driver



ANCAP Safety Rating SSANGYONG STAVIC (2013 onwards)



PEDESTRIAN PROTECTION

Pedestrian Test.

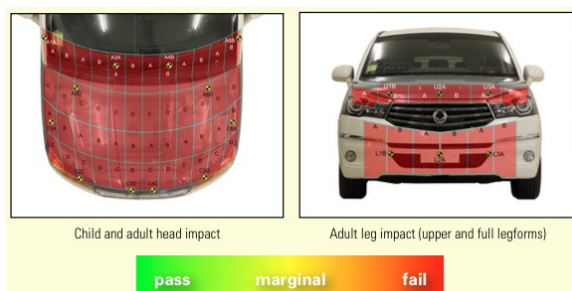
- Scored 0 out of 36 points

Child head impacts: 0 points
 Adult head impacts: 0 points
 Upper leg impacts: 0 points
 Lower leg impacts: 0 points

Pedestrian protection was poor in all tested regions.



Ssangyong Stavic



SAFETY FEATURES

These specifications are subject to change. Please check with manufacturer for the latest specifications. For a description of these safety features and safety rating requirements see the ANCAP Rating Road Map.

Safety Assist Technology (SAT)	Availability
Front airbag - driver	S
Front airbag - passenger	S
Side airbags (chest protection) - front seats	S
Side airbags (head protection) - front seats	X
Side airbags (head protection) - 2nd & 3rd row seats	X
Knee airbag - driver	X
Three-point seat belts for all forward facing seats	S
Seat belt pretensioners (front / rear outboard)	S / X
Intelligent seat belt reminder - driver	X
Intelligent seat belt reminder - front passenger	X
Intelligent seat belt reminder - 2nd & 3rd row seats	X
Head restraints for all seats	S
Antilock brakes (ABS)	S
Electronic brake distribution (EBD)	S
Emergency brake assist (EBA)	S
Electronic stability control (ESC)	S
Adaptive cruise control (ACC)	X
Autonomous emergency braking (AEB)	X
Lane support system	X
Roll stability system	S

S = Standard on all variants.
 O = Optional on base variant. May be standard on higher variants.
 V = Not available on base variant but standard or optional on higher variants.
 X = Not available on any variant.
 E = Available in Europe but not available on any Australasian variant



INJURY MEASUREMENTS

Body Region	Frontal offset test at 64 km/h (v5.1)		Side impact test at 50 km/h (v5.1)
	Driver	Passenger	Driver
Head			
HIC	465.00	353.00	4.00
Acceleration (g for 3ms)	55.10	51.40	7.80
Neck			
Shear (kN)	0.50	0.49	-
Tension (kN)	1.95	1.45	-
Extension (Nm)	21.50	14.70	-
Chest			
Acceleration (g for 3ms)	-	-	-
Compression (mm)	30.86	23.40	20.70
Viscous criterion (m/s)	0.13	0.07	0.13
Abdomen			
Force (kN)	-	-	0.33
Pelvis			
Force (kN)	-	-	0.63
Upper legs			
Femur force left (kN)	2.81	2.17	
Femur force right (kN)	2.18	3.22	
Knee displacement left (mm)	3.24	0.13	
Knee displacement right (mm)	0.30	0.00	
Lower legs			
Force left (kN)	2.82	1.15	
Force right (kN)	1.91	1.71	
Index (upper / lower) left	0.59 / 0.41	0.36 / 0.20	
Index (upper / lower) right	0.39 / 0.80	0.37 / 0.20	

INTRUSION MEASUREMENTS

Steering Column

Forwards:	18mm
Upwards:	34mm
Sideways:	3mm

Pedals

Brake (rearwards):	150mm
Brake (upwards):	64mm
A-Pillar (rearwards):	47mm

SCORE DEDUCTIONS

Deductions from frontal offset test scores

Loss of cabin integrity: 1 point from chest score
 Left knee hazard for driver: 2 points from upper leg score
 Right knee hazard for driver: 2 points from upper leg score*
 Right knee hazard for passenger: 2 points from upper leg score
 Excessive Brake pedal rearward movement (150mm): 2.016 points from foot score
 Blocked pedal: .662 points from foot score
 (*Maximum deduction is 2 points from a body region, except foot)

Note: Steering column and pedal movements are measured relative to the driver's seat.

Deductions from side impact test score

Excessive backplate load: .507 points from chest score.

Deductions from pole test score

No pole tested conducted..

* For information about the application of ANCAP ratings to model variants see the ANCAP Variant Policy. In brief, ratings do not automatically extend to variants that have different body styles, engine configurations, driven wheels or occupant restraint systems (e.g. fewer airbags). In these cases ANCAP considers technical evidence submitted by manufacturers before deciding on extending a rating to additional variants of a model.

^ Refer ANCAP Rating Road Map (www.ancap.com.au/media).

