

# Crash Test Results

## New Car Safety

### RENAULT MEGANE (DIESEL)

From 2011 Front+side+head airbags



**ANCAP** Occupant Protection  
Rated ★★★★★

**Occupant Protection Score 35.83 out of 37**

Variant: DCi Expression Eng: 1.5 diesel

Kerb mass 1290 kg Category: CAR - MEDIUM

Vehicles built: 2008 Tested by Euro NCAP

**Important note:** The *diesel left-hand-drive* European model was tested by Euro NCAP. Australasian specifications may vary and therefore models sold in Australasia might provide different levels of protection to those described on this page.

#### Model History and Safety Features

The tested model of Renault Megane was introduced in Australia and New Zealand during 2010. This ANCAP rating applies to the diesel variant that was released in 2011.

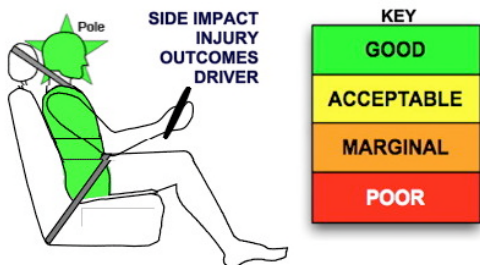
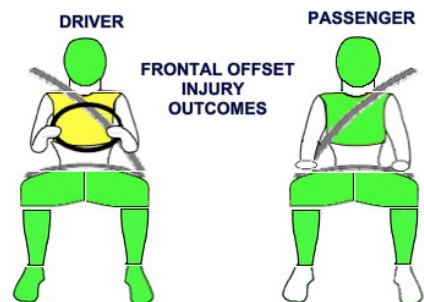
Dual front airbags, side airbags and head-protecting side curtains are standard equipment. Antilock brakes (ABS), electronic brakeforce distribution (EBD) and electronic stability control (ESC) are also standard. Intelligent seat belt reminders are fitted both front seats (all seats have seat belt reminders in Europe).

Pretensioners are fitted to the front seat belts to reduce slack in the event of a crash.

#### OCCUPANT PROTECTION: 5 Stars

The Megane scored 15.83 out of 16 in the offset crash test. The passenger compartment held its shape well. There was a slight risk of serious chest injury for the driver.

The vehicle scored 16 out of 16 in the side impact crash test and a further two points in the pole test.



Offset crash test at 64km/h (Euro NCAP)

#### FRONTAL OFFSET CRASH TEST

Body region scores out of 4 points each: Head/neck 4 pts, chest 3.83 pts, upper legs 4 pts, lower legs 4 pts.

The passenger compartment held its shape well in the offset crash test. The clutch pedal moved rearwards by 54 mm and upwards 16 mm. The steering wheel hub moved 24mm forward, 3mm downward and 14 mm sideways. The front ("A") pillar moved 10 mm rearwards. All doors remained closed during the crash. After the crash the all doors could be opened with normal effort.

The airbag cushioned the head of the driver and contact was stable. The passenger's head was cushioned by the airbag. There were no knee hazards.

#### SIDE IMPACT CRASH TEST

Body region scores out of 4 points each: Head 4 pts, chest 4 pts, abdomen 4 pts, pelvis 4 pts.

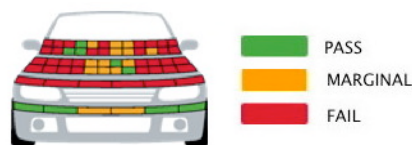
The vehicle was eligible for a pole impact test, since it had head-protecting side airbags. The vehicle earned the maximum two points in this test.

#### PEDESTRIAN PROTECTION: Marginal

The front edge of the bonnet scored no points for the protection provided to pedestrians' legs. The head of a struck adult or child would be offered predominantly poor protection by the bonnet.

PEDESTRIAN PROTECTION	Child head impacts	1.62
<b>MARGINAL</b>	Adult head impacts	3.34
	Upper leg impacts	Zero
	Lower leg impacts	5.66
	Total (out of 36)	10.62

Tested by Euro NCAP v5.1



**AUGUST 2012**

PO Box 4041

Manuka ACT 2603

megane11.doc Rated: 2011

Issued 15/08/2012



**ANCAP**  
Crash testing for safety

AUSTRALASIAN  
NEW CAR ASSESSMENT  
PROGRAM

# TECHNICAL DATA - RENAULT MEGANE - From 2011

## INJURY MEASUREMENTS

Body region	Offset Crash Test at 64km/h (v5.1)		Side Impact Crash Test at 50km/h (v5.1)
	Driver	Passenger	Driver
<b>Head HIC</b>	278	237	26
Acceleration (g for 3ms)	39.6	37.9	19.0
<b>Neck - Shear (kN)</b>	0.43	0.48	-
Tension (kN)	0.74	1.10	-
Extension (Nm)	28.1	10.3	-
<b>Chest Accln (g for 3ms)</b>	-	-	-
Compression (mm)	23.20	21.20	18.90
Viscous criterion (m/s)	0.09	0.12	0.10
<b>Abdomen - Force (kN)</b>	-	-	0.670
<b>Pelvis - Force (kN)</b>	-	-	1.710
<b>Upper legs Force (kN)</b>			
Left	0.34	0.34	
Right	0.09	0.29	
Knee displ (mm)			
Left	0.10	0.50	
Right	0.20	0.30	
<b>Lower legs Force (kN)</b>			
Left	1.70	1.69	
Right	1.83	1.58	
Index (Upper/Low)			
Left	0.36 /0.20	0.28 /0.20	
Right	0.36 /0.18	0.34/0.18	

### Bonus points (maximum 5)

Pole Test: 2 pts

Seat belt reminders: 2 (see table below for details)

### Modifiers - deductions from offset test scores

Head	No deduction
Chest	No deduction
Upper leg	No deduction
Lower leg	No deduction
Foot score	Score 4 points

### Modifiers - deductions from side impact test scores

Chest	No deduction
-------	--------------

### Safety features

These specifications are subject to change. Please check with manufacturer for the latest specifications.

Driver airbag	S	Antilock (ABS) brakes / Electronic brake distribution / Brake Assist	S/S/S
Passenger front airbag	S	Electronic stability control (ESC, VSC, DSC, ESP, VSA)	S#
Side airbags, front seats - chest protection	S	3 point seat belt for all forward-facing seats	S
Side airbags, front seats - head protection	S	Whiplash protection (RCAR protocol)	Pending
Side airbags, rear seats - head protection	S	Intelligent seat belt reminder - driver	S
Driver knee airbag	X	Intelligent seat belt reminder - front passenger	S
Seat belt pretensioners (Front/Rear outboard)	S/X	Intelligent seat belt reminder - rear seats	X @

Key: @ Intelligent seat belt reminders for all seats in Europe

S = standard on all variants

O = optional on base variant. May be standard on higher variants

V= not available on base variant but standard or optional on higher variants

X = not available on any variant

# ESC required by ANCAP for 5 star rating from 2008

