

Crash Test Results

New Car Safety

RENAULT KOLEOS (LHD)

2008 on

Front+side+head airbags



ANCAP Occupant Protection
Rated ★★★★★

Occupant Protection Score 33.08 out of 37

Variant: Dynamique

Eng: 2 litre diesel

Kerb weight: 1760 kg

Category: 4WD - MEDIUM

Vehicles built: 2008

Tested by Euro NCAP

Important note: The *diesel left-hand-drive* European model was tested by Euro NCAP. Australasian specifications may vary and therefore models sold in Australasia might provide different levels of protection to those described on this page.

Model History and Safety Features

The tested model of Renault Koleos was introduced in Australia during 2008.

Dual front airbags, side airbags and head-protecting side curtains are standard equipment. Antilock brakes (ABS), electronic brake distribution (EBD) and electronic stability control (ESC) are also standard. Intelligent seat belt reminders are fitted to both front seats.

The front seat belt buckles are mounted on the seats and the upper anchorages are adjustable. These features improve the fit of the seat belt. Pretensioners are fitted to the front seat belts to reduce slack in the event of a crash. A three point seat belt is fitted to the centre rear seat. This provides better protection than a two point (lap) seat belt.

OCCUPANT PROTECTION: 5 Stars

The Koleos scored 13.12 out of 16 in the offset crash test. The passenger compartment held its shape well. There was a slight risk of serious chest and leg injury for the driver. Passenger leg protection was marginal.

The vehicle scored 15.96 out of 16 in the side impact crash test. There was a slight risk of serious chest and abdomen injury for the driver. A further two points were earned in the optional pole test.



Offset crash test at 64km/h

FRONTAL OFFSET CRASH TEST (v4.2)

Body region scores out of 4 points each: Head/neck 4 pts, chest 3.31 pts, upper legs 2 pts, lower legs 3.81 pts.

The passenger compartment held its shape well in the offset crash test. The clutch pedal moved rearwards by 52 mm and downwards 10mm. The steering wheel hub moved 15mm forward, 10 mm upward and 2 mm sideways. The front ("A") pillar moved 16 mm rearwards. All doors remained closed during the crash. After the crash high manual effort was required to open the driver door.

The airbag cushioned the head of the driver and contact was stable. Steering column components were a potential source of injury for the driver's knees. The passenger's head was cushioned by the airbag. The glove box and dash were a potential source of injury for the passenger's knees.

SIDE IMPACT CRASH TEST (v4.2)

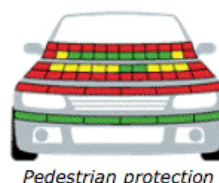
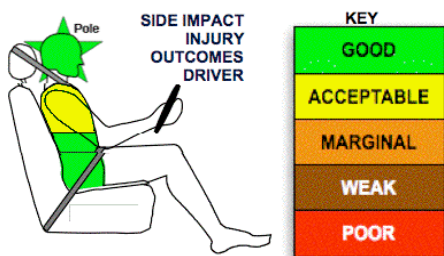
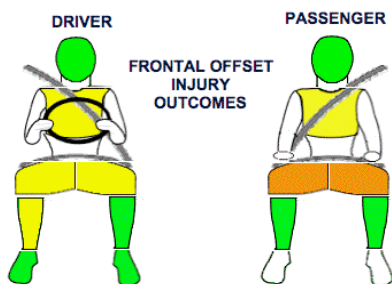
Body region scores out of 4 points each: Head 4 pts, chest 3.96 pts, abdomen 4 pts, pelvis 4 pts.

The vehicle was eligible for an optional pole impact test, since it had head-protecting side airbags and scored four points for the head in the side impact test. The manufacturer decided to go ahead with the pole test and the vehicle earned a further two points.

PEDESTRIAN PROTECTION: 2 Stars

The bonnet leading edge offered only a poor level of leg protection. The bonnet top was also rated as predominantly poor for the protection offered to a both a child and adult's head.

PEDESTRIAN PROTECTION		
<p>Rated ★★☆☆☆ Tested by Euro NCAP v4.2</p>	Child head impacts	4.16
	Adult head impacts	4.35
	Upper leg impacts	Zero
	Lower leg impacts	5.50
	Total (out of 36)	14.01



GOOD
ADEQUATE
MARGINAL

September 2008

PO Box 4041

Manuka ACT 2603

koleos08.doc

Issued 17/9/2008



ANCAP
Crash testing for safety

AUSTRALASIAN
NEW CAR ASSESSMENT
PROGRAM

www.ancap.com.au

TECHNICAL DATA - RENAULT KOLEOS - 2008 on

INJURY MEASUREMENTS

Body region	Offset Crash Test at 64km/h (v4.2)		Side Impact Crash Test at 50km/h (v4.2)
	Driver	Passenger	Driver
Head HIC	238	185	13
Acceleration (g for 3ms)	40.5	32.3	14.5
Neck - Shear (kN)	0.30	0.58	-
Tension (kN)	1.32	0.84	-
Extension (Nm)	4.9	8.3	-
Chest Accln (g for 3ms)			-
Compression (mm)	25.30	26.80	7.00
Viscous criterion (m/s)	0.09	0.10	0.02
Abdomen - Force (kN)	-	-	0.440
Pelvis - Force (kN)	-	-	1.130
Upper legs Force (kN)			
Left	0.91	2.59	
Right	0.15	0.22	
Knee displ (mm)			
Left	0.20	4.50	
Right	0.20	0.70	
Lower legs Force (kN)			
Left	1.92	1.59	
Right	2.29	1.19	
Index (Upper/Low)			
Left	0.39 /0.28	0.27 /0.21	
Right	0.27 /0.29	0.14/0.13	

Bonus points (maximum 5)

Pole Test: 2 pts

Seat belt reminders: 2 (see table below for details)

Modifiers - deductions from offset test scores

Head	No deduction
Chest	No deduction
Upper leg Variable loading	0.5 pt deduction Drv Left & Right
Variable & concentrated loads	2pt deduction Passn Left & Right
Lower leg	No deduction
Foot score	Score 4 points

Modifiers - deductions from side impact test scores

Chest Backplate load	0.04 pt deduction
----------------------	-------------------

Safety features

These specifications are subject to change. Please check with manufacturer for the latest specifications.



Driver airbag	S	Antilock (ABS) brakes / Electronic brakeforce distribution / Brake Assist	S/S/S
Passenger front airbag	S	Electronic stability control (ESC, VSC, DSC, ESP, VSA)	S#
Side airbags, front seats - chest protection	S	3 point centre rear seat belt	S
Side airbags, front seats - head protection	S	Active head restraints - front seats	S
Side airbags, rear seats - head protection	S	Intelligent seat belt reminder - driver	S
Driver knee airbag	X	Intelligent seat belt reminder - front passenger	S
Seat belt pretensioners (Front/Rear outboard)	S/X	Rear seat belt status indicator	S*

Key: * Rear seat belt reminder system fitted but not eligible for bonus points.

S = standard on all variants

O = optional on base variant. May be standard on higher variants

V= not available on base variant but standard or optional on higher variants

X = not available on any variant

ESC required by ANCAP for 5 star rating from 2008