

Crash Test Results

New Car Safety

RENAULT CLIO 3 (LHD Diesel)

2006 on (New Zealand only)

Front+side+head (curtain) airbags



Offset crash test at 64km/h



ANCAP
Rated ★★★★★

Occupant Protection

Occupant Protection Score 32.67 out of 37

Variant: Comfort dCi 3 door Eng: 1.5 Diesel

Kerb weight: 1170 kg Category: SMALL CAR

Vehicles built: 2005

Important note: The diesel left-hand-drive European model with side curtains was tested by Euro NCAP. Australasian specifications may vary and therefore models sold in Australasia might provide different levels of protection to those described on this page. At the time of publication the Clio 3 was only sold in New Zealand. This assessment does not apply to the Australian Clio.

Model History and Safety Features

The tested model of Renault Clio 3 was introduced in New Zealand during 2006.

Dual front airbags, side airbags and head-protecting side curtains are standard equipment. Antilock brakes (ABS) with electronic brake distribution (EBD) are also standard. An intelligent seat belt reminder is fitted to the driver seat.

The front seat belt buckles are mounted on the seats and the upper anchorages are adjustable. These features improve the fit of the seat belt. Pre-tensioners are fitted to the front and outer rear seat belts to reduce slack in the event of a crash. A three point seat belt is fitted to the centre rear seat. This provides better protection than a two point (lap) seat belt.

OCCUPANT PROTECTION: 5 Stars

The Renault Clio 3 scored 14.11 out of 16 in the offset crash test. The passenger compartment held its shape well. There was a slight risk of serious chest and leg injury for the driver. Passenger leg protection was marginal. The vehicle scored 15.56 out of 16 in the side impact crash test and a further two points in the optional pole test.

FRONTAL OFFSET CRASH TEST (v4.1)

Body region scores out of 4 points each: Head/neck 4 pts, chest 3.63 pts, upper legs 2.64 pts, lower legs 3.84 pts.

The passenger compartment held its shape well in the offset crash test. The accelerator pedal moved rearwards by 36 mm and downwards 6mm. The steering wheel hub moved forwards 38mm, downwards 22mm and sideways 3 mm. The front ("A") pillar moved 24 mm rearwards. All doors remained closed during the crash. After the crash high manual effort was required to open the driver's door.


The airbag cushioned the head of the driver and contact was stable. Steering column components were a potential source of injury for the driver's knees. The passenger's head was cushioned by the airbag. The glove box was a potential knee hazard for the passenger.

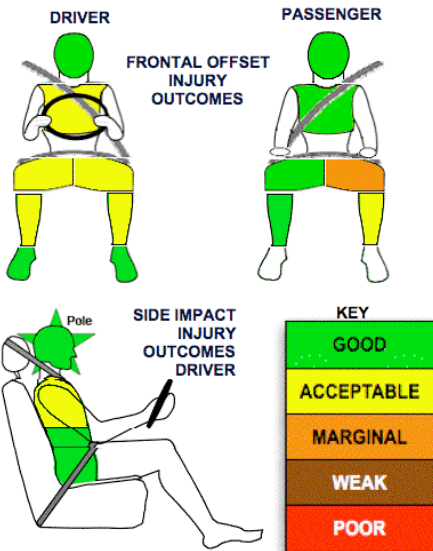
SIDE IMPACT CRASH TEST (v4.1)

Body region scores out of 4 points each: Head 4 pts, chest 3.56 pts, abdomen 4 pts, pelvis 4 pts.

The vehicle was eligible for an optional pole impact test, since it had head-protecting side airbags and scored four points for the head in the side impact test. The manufacturer decided to go ahead with the pole test and the vehicle earned a further two points.

PEDESTRIAN PROTECTION RATING (v4.1)

PEDESTRIAN PROTECTION	Child head impacts	4.35
 ANCAP Rated ★★★★★	Adult head impacts	5
	Upper leg impacts	Zero
	Lower leg impacts	Zero
	Total (out of 36)	9.35



June 2007

PO Box 1555
Canberra ACT
Australia 2601
clio06nz.doc
Issued 6/6/07



ANCAP

Crash testing for safety
AUSTRALASIAN
NEW CAR ASSESSMENT
PROGRAM

TECHNICAL DATA - RENAULT CLIO 3 - 2006 on (NZ only)

INJURY MEASUREMENTS

Body region	Offset Crash Test at 64km/h (v4.1)		Side Impact Crash Test at 50km/h (v4.1)
	Driver	Passenger	Driver
Head HIC	175	246	75
Acceleration (g for 3ms)	31.9	40.7	25.8
Neck - Shear (kN)	0.46	0.45	-
Tension (kN)	1.00	1.01	-
Extension (Nm)	9.0	6.9	-
Chest Accln (g for 3ms)	-	-	-
Compression (mm)	24.60	21.10	17.10
Viscous criterion (m/s)	0.09	0.06	0.10
Abdomen - Force (kN)	-	-	0.710
Pelvis - Force (kN)	-	-	2.480
Upper legs Force			
Left (kN)	0.14	1.58	
Right (kN)	0.38	0.25	
Knee displ (mm)			
Left	0.00	6.81	
Right	0.00	0.00	
Lower legs Force			
Left (kN)	2.11	2.24	
Right (kN)	1.99	1.86	
Index (Upper/Low)			
Left	0.36 /0.36	0.42 /0.25	
Right	0.41 /0.38	0.32/0.15	

Bonus points (maximum 5)

Pole Test: 2 pts

Seat belt reminders: 1 (see table below for details)

Modifiers - deductions from offset test scores

Head	No deduction
Chest	No deduction
Upper leg Variable & conc. loading	1 pt deduction Left & Right
Passenger variable contact	1 pt deduction left (inboard)
Lower leg	No deduction
Foot score	Score 4 points



Modifiers - deductions from side impact test scores

Chest T12 load	0.44 pt deduction
----------------	-------------------

Safety features

These New Zealand specifications are subject to change. Please check with manufacturer for the latest specifications.

Feature	Standard	Description	Availability
Driver airbag	S	Antilock (ABS) brakes / Electronic brake distribution	S/S
Passenger front airbag	S	Electronic stability control (ESC, VSC, DSC, ESP, VSA)	X
Side airbags, front seats - chest protection	S	3 point centre rear seat belt	S
Side airbags, front seats - head protection	S	Active head restraints - front seats	
Side airbags, rear seats - head protection	S	Intelligent seat belt reminder - driver	S
Driver knee airbag	X	Intelligent seat belt reminder - front passenger	X
Front seat belt pretensioners (also rear outer)	S	Rear seat belt status indicator	X

Key:

S = standard on all variants

O = optional on base variant. May be standard on higher variants

V= not available on base variant but standard or optional on higher variants

X = not available on any variant