

ANCAP Safety Rating PROTON EXORA (From 2013)



Test Vehicle(s).

Variant:	-
Kerb Mass:	1500 kg
Built:	2013
Engine:	1.6 petrol
Category:	PEOPLE MOVER
Variant Applicability*:	All variants



Frontal offset test at 64 km/h

Airbags	ESC	Frontal Offset	Side Impact	Pole	Whiplash	Pedestrian	Seat Belt Reminders	Overall Score	ANCAP Safety Rating
Frontal + Side chest/head	Standard	10.55 (out of 16)	14.82 (out of 16)	(out of 2)	MARGINAL	MARGINAL	1 (out of 3)	26.37 (out of 37)	★★★★

The Proton Exora was introduced in Australia in 2013. This ANCAP safety rating applies to all variants.

Dual frontal airbags are standard. Side airbags with thorax and head protection for the driver and front passenger are also standard. Antilock brakes (ABS), electronic brake distribution (EBD) and electronic stability control (ESC) are standard. An advanced seat belt reminder is fitted to the driver seat.

In the offset crash test driver chest protection was acceptable and leg protection was marginal. In the side impact crash test driver chest protection was acceptable,

OCCUPANT PROTECTION

Frontal Offset Test.

Each body region is scored out of 4 points

Head / neck:	4.00 points
Chest:	3.04 points
Upper legs:	2.00 points
Lower legs:	1.51 points

The passenger compartment held its shape well in the offset test. Pedal and steering wheel displacements were well controlled. Steering column components were potential knee hazards. Driver and passenger contact with the airbags was stable. All doors remained closed during the crash. After the crash the driver door could be opened with high manual effort.

Side Impact Test.

Each body region is scored out of 4 points

Head:	4.00 points
Chest:	3.82 points
Abdomen:	4.00 points
Pelvis:	4.00 points

Good protection was provided for the driver in the side impact test. The side airbags performed well. A large gap between the rear window frame and door surround was a potential hazard for partial ejection.

Pole Test.

Not tested

The vehicle has head-protecting side airbags for the driver and front passenger but no pole test was performed.

Whiplash Protection Test.

Whiplash protection is assessed to the RCAR Protocol

Geometric test:	Good
Dynamic test:	Marginal
Overall whiplash rating:	MARGINAL
Pending	

Injury Outcomes.

Frontal Offset
Driver



Passenger



Side Impact
Driver



Whiplash Protection



ANCAP Safety Rating PROTON EXORA (From 2013)



PEDESTRIAN PROTECTION

Pedestrian Test.

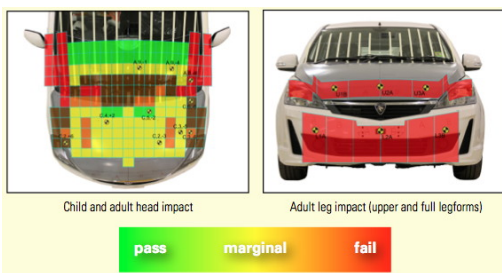
- Scored 12.57 out of 36 points

Child head impacts: 6.50 points out of 10.43
 Adult head impacts: 6.07 points out of 13.57
 Upper leg impacts: 0 points out of 6
 Lower leg impacts: 0 points out of 6

The central bonnet area provided acceptable levels of protection, while the bonnet edges and windscreen base performed poorly. Both leg regions both received a zero score.



Proton Exora



SAFETY FEATURES

These specifications are subject to change. Please check with manufacturer for the latest specifications. For a description of these safety features and safety rating requirements see the ANCAP Rating Road Map.

Safety Assist Technology (SAT)	Availability
Front airbag - driver	S
Front airbag - passenger	S
Side airbags (chest protection) - front seats	S
Side airbags (head protection) - front seats	S
Side airbags (head protection) - 2nd row seats	X
Knee airbag - driver	X
Three-point seat belts for all forward facing seats	S
Seat belt pretensioners (front / rear outboard)	S / X
Intelligent seat belt reminder - driver	S
Intelligent seat belt reminder - front passenger	X
Intelligent seat belt reminder - 2nd row seats	X
Head restraints for all seats	S
Antilock brakes (ABS)	S
Electronic brake distribution (EBD)	S
Emergency brake assist (EBA)	S
Electronic stability control (ESC)	S
Adaptive cruise control (ACC)	X
Autonomous emergency braking (AEB)	X
Lane support system	X
Daytime running lights	S
Reversing collision avoidance	S

S = Standard on all variants.
 O = Optional on base variant. May be standard on higher variants.
 V = Not available on base variant but standard or optional on higher variants.
 X = Not available on any variant.

INJURY MEASUREMENTS

Body Region	Frontal offset test at 64 km/h (v5.1)		Side impact test at 50 km/h (v5.1)
	Driver	Passenger	Driver
Head			
HIC	270.00	230.00	56.00
Acceleration (g for 3ms)	46.00	42.70	27.80
Neck			
Shear (kN)	0.41	0.53	-
Tension (kN)	1.01	0.77	-
Extension (Nm)	19.80	19.10	-
Chest			
Acceleration (g for 3ms)			-
Compression (mm)	28.73	20.70	22.90
Viscous criterion (m/s)	0.14	0.05	0.21
Abdomen			
Force (kN)	-	-	0.52
Pelvis			
Force (kN)	-	-	1.12
Upper legs			
Femur force left (kN)	0.17	0.02	
Femur force right (kN)	0.85	1.42	
Knee displacement left (mm)	1.11	0.24	
Knee displacement right (mm)	2.34	2.54	
Lower legs			
Force left (kN)	2.17	1.87	
Force right (kN)	1.32	1.37	
Index (upper / lower) left	0.24 / 0.71	0.30 / 0.15	
Index (upper / lower) right	0.28 / 0.96	0.35 / 0.19	

INTRUSION MEASUREMENTS

Steering Column

Forwards:	55mm
Upwards:	43mm
Sideways:	6mm

Pedals

Brake (rearwards):	62mm
Accelerator (upwards):	20mm
A-Pillar (rearwards):	39mm

SCORE DEDUCTIONS

Deductions from frontal offset test scores

Left knee hazard for driver: 2 points from upper leg score
 Right knee hazard for driver: 2 points from upper leg score*
 (*Maximum deduction is 2 points from a body region)

Note: Steering column and pedal movements are measured relative to the driver's seat.

Deductions from side impact test score

Door opened (gap in rear door): 1 point from side test score.

Deductions from pole test score

Not tested

* For information about the application of ANCAP ratings to model variants see the ANCAP Variant Policy. In brief, ratings do not automatically extend to variants that have different body styles, engine configurations, driven wheels or occupant restraint systems (e.g. fewer airbags). In these cases ANCAP considers technical evidence submitted by manufacturers before deciding on extending a rating to additional variants of a model.

^ Refer ANCAP Rating Road Map (www.ancap.com.au/media).

DOCUMENT REF: EXORA13
 CREATED / REVISED: 10/12/2013