

Crash Test Results

New Car Safety

Peugeot 508 (LHD)

From 2011 Front+side+head airbags



ANCAP Occupant Protection
Rated ★★★★★

Occupant Protection Score 35.1 out of 37

Variant: 'Active' Sedan, LHD Eng: 1.6L Diesel

Kerb mass 1405 kg Category: CAR - MEDIUM

Vehicles built: 2011 Tested by Euro NCAP

Important note: The *diesel left-hand-drive* European model was tested by Euro NCAP. Australasian specifications may vary and therefore models sold in Australasia might provide different levels of protection to those described on this page.

Model History and Safety Features

The tested model of the 508 was introduced in Australia during 2011.

Dual front airbags, side airbags and head-protecting side curtains are standard equipment. Antilock brakes (ABS), electronic brakeforce distribution (EBD) and electronic stability control (ESC) are also standard. Intelligent seat belt reminders are fitted to all seats. Pretensioners are fitted to the front seat belts to reduce slack in the event of a crash. A three point seat belt is fitted to the centre rear seat. This provides better protection than a two point (lap) seat belt.

OCCUPANT PROTECTION: 5 Stars

The 508 scored 14.64 out of 16 in the offset crash test. There was a slight risk of serious chest injury for the driver. There was a slight risk of serious leg injury for the driver and front passenger

The vehicle scored 15.46 out of 16 in the side impact crash test. There was a slight risk of serious chest injury for the driver. A further two points were scored in the pole test.



Offset crash test at 64km/h

FRONTAL OFFSET CRASH TEST

Body region scores out of 4 points each: Head/neck 4 pts, chest 3.44 pts, upper legs 4 pts, lower legs 3.2 pts.

The passenger compartment held its shape well in the offset crash test. There were no deductions from pedal movements. The steering wheel hub moved 5mm forward, 23mm downward and 9mm sideways. The front ("A") pillar moved 29mm rearwards. All doors remained closed during the crash. After the crash the driver's door could be opened with normal effort.

The airbag cushioned the head of the driver and contact was stable. There were no knee hazards. The passenger's head was cushioned by the airbag.

SIDE IMPACT CRASH TEST

Body region scores out of 4 points each:

Head 4pts, chest 2.46pts, abdomen 3.25pts, pelvis 4pts.

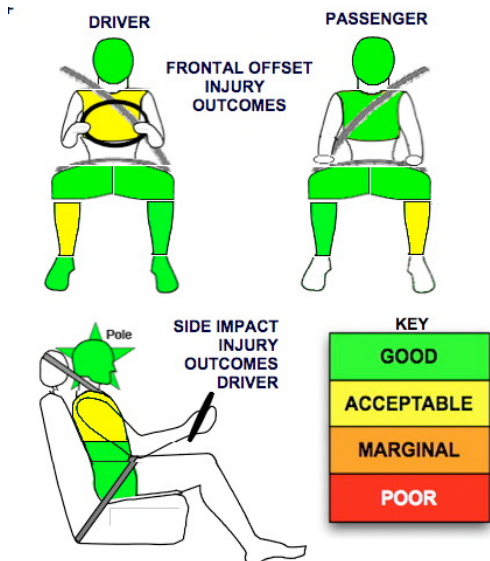
The vehicle was eligible for an optional pole impact test, since it had head-protecting side airbags and the vehicle earned the maximum two points for this test.

PEDESTRIAN PROTECTION: Marginal

The protection provided by the bumper to pedestrians' legs was good in most areas tested but poor in some. The front edge of the bonnet offered poor or marginal protection. In most areas likely to be struck by a child's head, the bonnet offered good protection. However, in those areas likely to be struck by an adult's head, the bonnet provided poor protection.

PEDESTRIAN PROTECTION	Child head impacts	8.70
MARGINAL	Adult head impacts	0.60
	Upper leg impacts	1.50
	Lower leg impacts	4.0
	Total (out of 36)	14.81

Tested by Euro NCAP v5.2



JULY 2011

PO Box 4041

Manuka ACT 2603

508_11.doc

Issued 8/8/2011



ANCAP
Crash testing for safety

AUSTRALASIAN
NEW CAR ASSESSMENT
PROGRAM

TECHNICAL DATA - Peugeot 508 - from 2011

INJURY MEASUREMENTS

Body region	Offset Crash Test at 64km/h (v5.1)		Side Impact Crash Test at 50km/h (v5.1)
	Driver	Passenger	Driver
Head HIC	316	398	44
Acceleration (g for 3ms)	49.948.9	56.2	21.5
Neck - Shear (kN)	0.62	0.49	-
Tension (kN)	1.39	1.14	-
Extension (Nm)	16.6	8.07	-
Chest Accln (g for 3ms)	-	-	-
Compression (mm)	25.9	19.8	24.7
Viscous criterion (m/s)	0.07	0.06	0.14
Abdomen - Force (kN)	-	-	0.81
Pelvis - Force (kN)	-	-	1.94
Upper legs Force (kN)			
Left	0.18	0.7	
Right	0.24	0.2	
Knee displ (mm)			
Left	0.1	0.2	
Right	0.2	1.0	
Lower legs Force (kN)			
Left	1.5	2.44	
Right	1.59	0.94	
Index (Upper/Low)			
Left	0.37/0.39	0.58/0.53	
Right	0.50/0.43	0.39/0.16	

Bonus points (maximum 5)

Pole Test: 2 pts

Seat belt reminders: 3 (see table below for details)

Modifiers - deductions from offset test scores

Head	No deduction
Chest	No deduction
Upper leg Variable & conc. loading	No deduction
Lower leg	No deduction
Foot score	Score 4 points

Modifiers - deductions from side impact test scores

Chest	No deduction
-------	--------------

Safety features

These specifications are subject to change. Please check with manufacturer for the latest specifications.



Driver airbag	S	Antilock (ABS) brakes / Electronic brake distribution / Brake Assist	S/S/S
Passenger front airbag	S	Electronic stability control (ESC, VSC, DSC, ESP, VSA)	S#
Side airbags, front seats - chest protection	S	3 point centre rear seat belt	S
Side airbags, front seats - head protection	S	Whiplash protection (RCAR Protocol)	PENDING
Side airbags, rear seats - head protection	S	Intelligent seat belt reminder - driver	S
Driver knee airbag	X	Intelligent seat belt reminder - front passenger	S
Seat belt pretensioners (Front/Rear outboard)	S/X	Intelligent seat belt reminder - rear seats	S

Key:

S = standard on all variants

O = optional on base variant. May be standard on higher variants

V= not available on base variant but standard or optional on higher variants

X = not available on any variant

ESC required by ANCAP for 5 star rating from 2008