

Crash Test Results

New Car Safety

PEUGEOT 308CC (LHD)

2009 on

Front+side+head airbags



ANCAP Occupant Protection
Rated ★★★★★

Occupant Protection Score 35.87 out of 37

Variant: 1.6 SPORTPACK Eng: 1.6

Kerb weight: 1512 kg Category: CAR - SPORTS

Vehicles built: 2008 Tested by Euro NCAP

Important note: The *left-hand-drive* European model was tested by Euro NCAP. Australasian specifications may vary and therefore models sold in Australasia might provide different levels of protection to those described on this page.

Model History and Safety Features

The tested model of Peugeot 308CC was introduced in Australia during 2009.

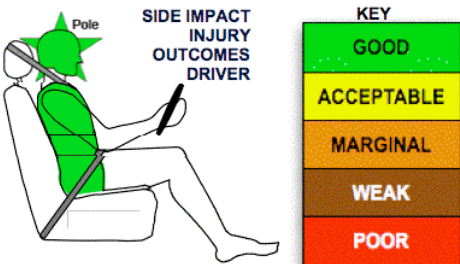
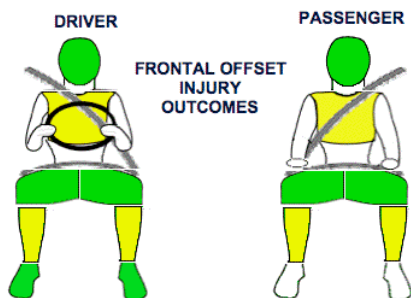
Dual front airbags and side airbags with head-protection are standard equipment. Antilock brakes (ABS), electronic brakeforce distribution (EBD) and electronic stability control (ESC) are also standard. Intelligent seat belt reminders are fitted to all seats.

The front seat belt buckles are mounted on the seats and the upper anchorages are adjustable. These features improve the fit of the seat belt. Pretensioners are fitted to the front seat belts to reduce slack in the event of a crash.

OCCUPANT PROTECTION: 5 Stars

The 308CC scored 14.867 out of 16 in the offset crash test. The passenger compartment held its shape well. There was a slight risk of serious chest and keg injury for the driver and passenger.

The vehicle scored 16 out of 16 in the side impact crash test and a further two points in the optional pole test.



Offset crash test at 64km/h

FRONTAL OFFSET CRASH TEST (v4.2)

Body region scores out of 4 points each: Head/neck 4 pts, chest 3.50 pts, upper legs 4 pts, lower legs 3.37 pts.

The passenger compartment held its shape well in the offset crash test. The brake pedal moved rearwards by 51 mm and upwards 23 mm. The steering wheel hub moved 15mm forward, 3mm downward and 16 mm sideways. The front ("A") pillar moved 25mm forwards. All doors remained closed during the crash. After the crash the driver's door could be opened with high manual effort.

The airbag cushioned the head of the driver and contact was stable. There were no knee hazards. The passenger's head was cushioned by the airbag.

SIDE IMPACT CRASH TEST (v4.2)

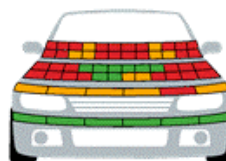
Body region scores out of 4 points each: Head 4 pts, chest 4 pts, abdomen 4 pts, pelvis 4 pts.

The vehicle was eligible for an optional pole impact test. The manufacturer decided to go ahead with this test and the vehicle earned a further two points.

PEDESTRIAN PROTECTION: 2 Stars

The bumper scored maximum points for the protection offered to pedestrians' legs. However, the bonnet surface offered predominantly poor protection to the head of a struck child or adult.

PEDESTRIAN PROTECTION		
 Rated ★★☆☆☆ Tested by Euro NCAP v4.2	Child head impacts	4.85
	Adult head impacts	0.08
	Upper leg impacts	0.84
	Lower leg impacts	6
	Total (out of 36)	11.77



■ GOOD
■ ADEQUATE
■ MARGINAL

August 2009

PO Box 4041

Manuka ACT 2603

308cc09.doc

Issued 6/8/09



ANCAP

Crash testing for safety

AUSTRALASIAN
NEW CAR ASSESSMENT
PROGRAM

TECHNICAL DATA - PEUGEOT 308CC - 2009 on

INJURY MEASUREMENTS

Body region	Offset Crash Test at 64km/h (v4.2)		Side Impact Crash Test at 50km/h (v4.2)
	Driver	Passenger	Driver
Head HIC	309	504	30
Acceleration (g for 3ms)	47.9	49.9	18.6
Neck - Shear (kN)	0.55	0.28	-
Tension (kN)	1.42	1.41	-
Extension (Nm)	11.7	22.7	-
Chest Accln (g for 3ms)	-	-	-
Compression (mm)	25.50	24.00	15.30
Viscous criterion (m/s)	0.08	0.07	0.06
Abdomen - Force (kN)	-	-	0.510
Pelvis - Force (kN)	-	-	1.100
Upper legs Force (kN)			
Left	0.20	0.85	
Right	0.38	0.91	
Knee displ (mm)			
Left	0.00	0.30	
Right	0.00	0.50	
Lower legs Force (kN)			
Left	2.95	2.08	
Right	2.25	2.50	
Index (Upper/Low)			
Left	0.44 /0.29	0.50 /0.26	
Right	0.37 /0.27	0.36/0.3	

Bonus points (maximum 5)

Pole Test: 2 pts

Seat belt reminders: 3 (see table below for details)

Modifiers - deductions from offset test scores

Head	No deduction
Chest	No deduction
Upper leg Variable & conc. loading	No deduction
Lower leg	No deduction
Foot score	Score 4 points

Modifiers - deductions from side impact test scores

Chest	No deduction
-------	--------------

Safety features

These specifications are subject to change. Please check with manufacturer for the latest specifications.



Driver airbag	S	Antilock (ABS) brakes / Electronic brake distribution / Brake Assist	S/S/S
Passenger front airbag	S	Electronic stability control (ESC, VSC, DSC, ESP, VSA)	S#
Side airbags, front seats - chest protection	S	3 point centre rear seat belt	-
Side airbags, front seats - head protection	S	Active head restraints - front seats	X
Side airbags, rear seats - head protection	X	Intelligent seat belt reminder - driver	S
Driver knee airbag	X	Intelligent seat belt reminder - front passenger	S
Seat belt pretensioners (Front/Rear outboard)	S/X	Rear seat belt status indicator	S

Key:

S = standard on all variants

O = optional on base variant. May be standard on higher variants

V= not available on base variant but standard or optional on higher variants

X = not available on any variant

ESC required by ANCAP for 5 star rating from 2008