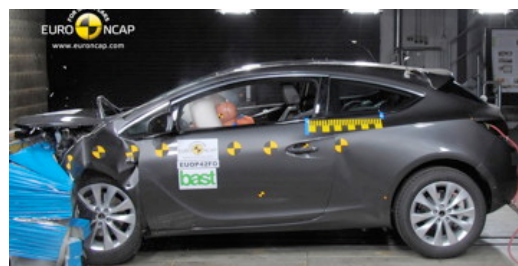


Crash Test Results

New Car Safety

OPEL ASTRA GTC

From 2012 Front+side+head airbags



Offset crash test at 64km/h (Euro NCAP)

FRONTAL OFFSET CRASH TEST

Body region scores out of 4 points each: Head/neck 4 pts, chest 3.78 pts, upper legs 4 pts, lower legs 3.29 pts.

The passenger compartment held its shape well in the offset crash test. The clutch pedal moved rearwards by 18 mm and upwards 7 mm. The steering wheel hub moved 41mm forward, 13mm downward and 2 mm sideways. All doors remained closed during the crash. After the crash all doors could be opened with normal effort.

The airbag cushioned the head of the driver and contact was stable. There were no knee hazards. The passenger's head was cushioned by the airbag.

SIDE IMPACT CRASH TEST

Body region scores out of 4 points each: Head 4 pts, chest 2.29 pts, abdomen 4 pts, pelvis 4 pts.

The vehicle was eligible for a pole impact test, since it had head-protecting side airbags. The vehicle earned the maximum two points in this test.

PEDESTRIAN PROTECTION: MARGINAL

In all of the areas likely to be struck by an adult's head, protection was poor. The area likely to be struck by children provided good protection and scored maximum points. The bumper provided good protection to pedestrians' legs. However, the protection offered to a pedestrians' hip was poor.

PEDESTRIAN PROTECTION		
MARGINAL	Child head impacts	12
	Adult head impacts	Zero
	Upper leg impacts	Zero
	Lower leg impacts	6
	Total (out of 36)	18

Tested by Euro NCAP v5.3



Occupant Protection Score 33.35 out of 37

Tested variant: 1.4 Sport Eng: 1.4 petrol

Kerb mass 1440 kg Category: CAR - MEDIUM

Vehicles built: 2011 Tested by Euro NCAP

Important note: The *left-hand-drive* European model was tested by Euro NCAP. Australasian specifications may vary and therefore models sold in Australasia might provide different levels of protection to those described on this page.

Model History and Safety Features

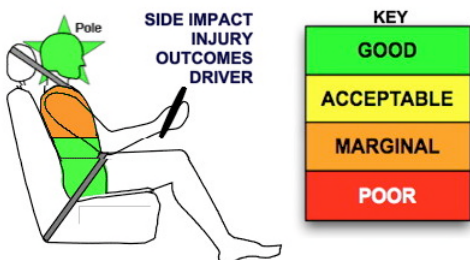
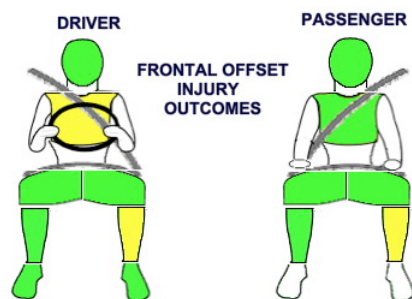
The tested model of Opel Astra GTC was introduced in Australia during 2012.

Dual front airbags, side airbags and head-protecting side curtains are standard equipment. Antilock brakes (ABS), electronic brakeforce distribution (EBD) and electronic stability control (ESC) are also standard. Intelligent seat belt reminders are fitted to both front seats.

OCCUPANT PROTECTION: 5 Stars

The Astra GTC scored 15.07 out of 16 in the offset crash test. The passenger compartment held its shape well. There was a slight risk of serious chest and leg injury for the driver.

The vehicle scored 14.29 out of 16 in the side impact crash test. There was a moderate risk of serious chest injury for the driver. A further two points were scored in the pole test.



Whiplash Protection (RCAR Protocol)



OCTOBER 2012

PO Box 4041

Manuka ACT 2603

astra12atc.doc

Issued 25/09/2012



ANCAP

Crash testing for safety

AUSTRALASIAN
NEW CAR ASSESSMENT
PROGRAM

www.ancap.com.au

TECHNICAL DATA - OPEL ASTRA GTC - From 2012

INJURY MEASUREMENTS

Body region	Offset Crash Test at 64km/h (v5.2)		Side Impact Crash Test at 50km/h (v5.2)
	Driver	Passenger	Driver
Head HIC	432	383	57
Acceleration (g for 3ms)	49.9	55.3	26.3
Neck - Shear (kN)	0.85	0.37	-
Tension (kN)	0.70	0.73	-
Extension (Nm)	11.3	21.1	-
Chest Accln (g for 3ms)	-	-	-
Compression (mm)	23.56	20.73	30.56
Viscous criterion (m/s)	0.07	0.05	0.24
Abdomen - Force (kN)	-	-	0.640
Pelvis - Force (kN)	-	-	1.670
Upper legs Force (kN)			
Left	0.14	0.10	
Right	0.18	0.00	
Knee displ (mm)			
Left	0.30	0.30	
Right	0.30	0.40	
Lower legs Force (kN)			
Left	1.67	1.43	
Right	1.86	0.76	
Index (Upper/Low)			
Left	0.56 /0.18	0.43 /0.14	
Right	0.28 /0.32	0.21/0.07	

Bonus points (maximum 5)

Pole Test: 2 pts

Seat belt reminders: 2 (see table below for details)

Modifiers - deductions from offset test scores

Head	No deduction
Chest	No deduction
Upper leg	No deduction
Lower leg	No deduction
Foot score	Score 4 points

Modifiers - deductions from side impact test scores

Chest	No deduction
-------	--------------

Safety features

These specifications are subject to change. Please check with manufacturer for the latest specifications.



Driver airbag	S	Antilock (ABS) brakes / Electronic brake distribution / Brake Assist	S/S/S
Passenger front airbag	S	Electronic stability control (ESC, VSC, DSC, ESP, VSA)	S#
Side airbags, front seats - chest protection	S	3 point seat belt for all forward-facing seats	S
Side airbags, front seats - head protection	S	Whiplash protection (RCAR protocol)	Good
Side airbags, rear seats - head protection		Intelligent seat belt reminder - driver	S
Driver knee airbag	X	Intelligent seat belt reminder - front passenger	S
Seat belt pretensioners (Front/Rear outboard)	S/X	Intelligent seat belt reminder - rear seats	X

Key:

S = standard on all variants

O = optional on base variant. May be standard on higher variants

V= not available on base variant but standard or optional on higher variants

X = not available on any variant

ESC required by ANCAP for 5 star rating from 2008



ANCAP

Crash testing for safety

AUSTRALASIAN
NEW CAR ASSESSMENT
PROGRAM

www.ancap.com.au