

# ANCAP Safety Rating NISSAN PATHFINDER (From 2013)



## Test Vehicle(s).

|                         |                            |
|-------------------------|----------------------------|
| Variant:                | Nissan Pathfinder P42K 4x4 |
| Kerb Mass:              | 1980 kg                    |
| Built:                  | 2013                       |
| Engine:                 | 3.5 V6                     |
| Category:               | LARGE SUV                  |
| Variant Applicability*: | All variants               |



Frontal offset test at 64 km/h

| Airbags               | ESC      | Frontal Offset    | Side Impact       | Pole             | Whiplash | Pedestrian | Seat Belt Reminders | Overall Score     | ANCAP Safety Rating |
|-----------------------|----------|-------------------|-------------------|------------------|----------|------------|---------------------|-------------------|---------------------|
| Frontal + Side + Head | Standard | 14.73 (out of 16) | 16.00 (out of 16) | 2.000 (out of 2) | GOOD     | MARGINAL   | 3 (out of 3)        | 35.73 (out of 37) | ★★★★★               |

The tested model of Nissan Pathfinder was introduced in Australia and New Zealand in October 2013. This ANCAP safety rating applies to all variants.

Dual frontal, side chest and side head airbags (curtains) are standard. Antilock brakes (ABS), electronic brake distribution (EBD) and electronic stability control (ESC) are also standard. Advanced seat belt reminders are fitted to all seats.

In the offset crash test driver leg protection was acceptable. Head protection in the side pole test was good.

## OCCUPANT PROTECTION

### Frontal Offset Test.

Each body region is scored out of 4 points

|              |             |
|--------------|-------------|
| Head / neck: | 4.00 points |
| Chest:       | 4.00 points |
| Upper legs:  | 3.00 points |
| Lower legs:  | 3.73 points |

The passenger compartment held its shape well in the offset test. Pedal and steering wheel displacements were well controlled. Driver and passenger contact with the airbags was stable. All doors remained closed during the crash. After the crash all doors could be opened with normal effort.

### Side Impact Test.

Each body region is scored out of 4 points

|          |             |
|----------|-------------|
| Head:    | 4.00 points |
| Chest:   | 4.00 points |
| Abdomen: | 4.00 points |
| Pelvis:  | 4.00 points |

The side impact test normally used by ANCAP simulates a small car striking the driver's door of the test vehicle. Experience shows that large vehicles like the Pathfinder can be expected to perform well in this test. ANCAP has adopted a policy of awarding these types of vehicles a default score of 16 points (out of 16).

### Pole Test.

Scored out of 2 points

The vehicle was eligible for a side pole test because it has side curtain airbags. The vehicle scored the maximum 2 points for head protection in this test.

### Whiplash Protection Test.

Whiplash protection is assessed to the RCAR Protocol

|                          |      |
|--------------------------|------|
| Geometric test:          | Good |
| Dynamic test:            | Good |
| Overall whiplash rating: | GOOD |

## Injury Outcomes.

Frontal Offset  
Driver



Passenger



Side Impact & Pole  
Driver



Whiplash



# ANCAP Safety Rating NISSAN PATHFINDER (From 2013)

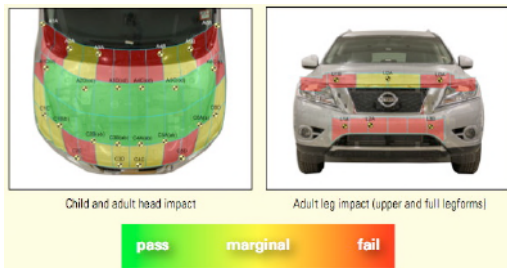


## PEDESTRIAN PROTECTION

- Scored 15.47 out of 36 points

Child head impacts: 8.74/12 points  
 Adult head impacts: 6.11/12 points  
 Upper leg impacts: 0.62/6 points  
 Lower leg impacts: 0/6 points

The central area of the bonnet provided good head protection while the windscreen-base, edges and front of the bonnet provided marginal to poor head protection. The front of the vehicle provided generally poor leg protection.



Nissan Pathfinder

## SAFETY FEATURES

These specifications are subject to change. Please check with manufacturer for the latest specifications. For a description of these safety features and safety rating requirements see the ANCAP Rating Road Map.

| Safety Assist Technology (SAT)                      | Availability |
|---|--------------|
| Front airbag - driver                               | S            |
| Front airbag - passenger                            | S            |
| Side airbags (chest protection) - front seats       | S            |
| Side airbags (head protection) - front seats        | S            |
| Side airbags (head protection) - 2nd row seats      | S            |
| Knee airbag - driver                                | X            |
| Three-point seat belts for all forward facing seats | S            |
| Seat belt pretensioners (front / rear outboard)     | S / X        |
| Intelligent seat belt reminder - driver             | S            |
| Intelligent seat belt reminder - front passenger    | S            |
| Intelligent seat belt reminder - 2nd row seats      | S            |
| Head restraints for all seats                       | S            |
| Antilock brakes (ABS)                               | S            |
| Electronic brake distribution (EBD)                 | S            |
| Emergency brake assist (EBA)                        | S            |
| Electronic stability control (ESC)                  | S            |
| Adaptive cruise control (ACC)                       | X            |
| Autonomous emergency braking (AEB)                  | X            |
| Lane support system                                 | X            |
| Automatic headlights                                | S            |
| Reversing collision avoidance                       | S            |
| Roll stability system                               | S            |
| Tyre pressure monitoring                            | S            |

S = Standard on all variants.  
 O = Optional on base variant. May be standard on higher variants.  
 V = Not available on base variant but standard or optional on higher variants.  
 X = Not available on any variant.



## INJURY MEASUREMENTS

| Body Region                  | Frontal offset test at 64 km/h<br>(v5.1) |             | Side impact test at 50 km/h                |
|------------------------------|--|-------------|--|
|                              | Driver                                   | Passenger   | Driver                                     |
| <b>Head</b>                  |  |             |  |
| HIC                          | 283.00                                   | 365.00      |  |
| Acceleration (g for 3ms)     | 41.50                                    | 51.10       |  |
| <b>Neck</b>                  |  |             |  |
| Shear (kN)                   | 0.36                                     | 0.50        | HIGH-SEAT VEHICLE<br>DEFAULT SCORE AWARDED |
| Tension (kN)                 | 1.25                                     | 0.83        |  |
| Extension (Nm)               | 22.20                                    | 18.30       |  |
| <b>Chest</b>                 |  |             |  |
| Acceleration (g for 3ms)     |  |             |  |
| Compression (mm)             | 21.00                                    | 13.00       |  |
| Viscous criterion (m/s)      | 0.05                                     | 0.05        |  |
| <b>Abdomen</b>               |  |             |  |
| Force (kN)                   | -  | -           |  |
| <b>Pelvis</b>                |  |             |  |
| Force (kN)                   | -  | -           |  |
| <b>Upper legs</b>            |  |             |  |
| Femur force left (kN)        | 1.15                                     | 0.98        |  |
| Femur force right (kN)       | 0.89                                     | 0.93        |  |
| Knee displacement left (mm)  | 3.88                                     | 0.19        |  |
| Knee displacement right (mm) | 0.40                                     | 0.67        |  |
| <b>Lower legs</b>            |  |             |  |
| Force left (kN)              | 1.61                                     | 1.78        |  |
| Force right (kN)             | 1.74                                     | 1.66        |  |
| Index (upper / lower) left   | 0.38 / 0.31                              | 0.30 / 0.29 |  |
| Index (upper / lower) right  | 0.40 / 0.46                              | 0.39 / 0.38 |  |

## INTRUSION MEASUREMENTS

### Steering Column

|            |      |
|------------|------|
| Forwards:  | 16mm |
| Downwards: | 56mm |
| Sideways:  | 5mm  |

### Pedals

|                          |      |
|--------------------------|------|
| Accelerator (rearwards): | 54mm |
| Accelerator (upwards):   | 26mm |
| A-Pillar (rearwards):    | 6mm  |

## SCORE DEDUCTIONS

### Deductions from frontal offset test scores

Left knee hazard for driver: 1 point from upper leg score  
Right knee hazard for driver: 1 points from upper leg score  
Note: Steering column and pedal movements are measured relative to the driver's seat.

### Deductions from side impact test score

High-seat vehicle: default side impact score awarded.

### Deductions from pole test score

No deductions for pole test.

\* For information about the application of ANCAP ratings to model variants see the ANCAP Variant Policy. In brief, ratings do not automatically extend to variants that have different body styles, engine configurations, driven wheels or occupant restraint systems (e.g. fewer airbags). In these cases ANCAP considers technical evidence submitted by manufacturers before deciding on extending a rating to additional variants of a model.

^ Refer ANCAP Rating Road Map ([www.ancap.com.au/media](http://www.ancap.com.au/media)).

DOCUMENT REF: PATHFINDER13  
CREATED / REVISED: 8/10/2013

