

# ANCAP Safety Rating: NISSAN NAVARA SINGLE CAB (July 2015 onwards)



**ANCAP**  
Safety ★★★★★



Frontal offset test at 64km/h (dual cab tested by ANCAP)

## This ANCAP safety rating applies to:

<b>Make / Model</b>	Nissan NP300 Navara Single Cab
<b>Year Range</b>	July 2015 - onwards
<b>Variant(s)*</b>	All single cab variants
<b>Vehicle Type</b>	Utility / Van

The Nissan NP300 Navara Utility was introduced in Australia and New Zealand in mid-2015. This 5 star ANCAP safety rating applies to all single cab variants.

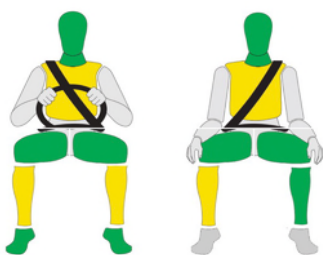
This rating is based on ANCAP tests of the dual cab Navara. Nissan provided technical evidence to show that the king cab and single cab variants have the same rating.

Dual frontal, side chest and head airbags (curtains) and driver knee airbag are standard. Electronic Brake Distribution (EBD) and Emergency Brake Assist (EBA) are also standard. Advanced seat belt reminders are fitted to all seats.

## Injury Outcomes.

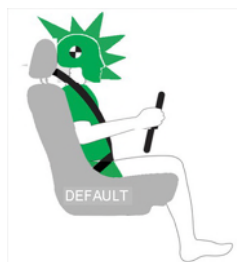
### Frontal Offset

Driver Passenger



### Side Impact & Pole\*

Driver



### Whiplash Protection

Driver



	GOOD
	ACCEPTABLE
	MARGINAL
	POOR

\* Head protection only.

## Test Results Summary.

<b>Airbags</b>	Dual Frontal, Side, Head
<b>Frontal Offset Test</b>	14.01 (out of 16)
<b>Side Impact Test</b>	16.00 (out of 16)
<b>Pole Test</b>	2 (out of 2)
<b>Whiplash Protection</b>	Good
<b>Pedestrian Protection</b>	Marginal
<b>ESC</b>	Standard
<b>Seat Belt Reminders</b>	2.0 (out of 3)
<b>Overall Score</b>	34.01 (out of 37)
<b>ANCAP Safety Rating</b>	★★★★★
<b>Rating Year<sup>^</sup></b>	2015

## Occupant Protection.

### Frontal Offset Test

Each body region is scored out of 4 points

Head / neck:	4.00 points
Chest:	2.72 points
Upper legs:	4.00 points
Lower legs:	3.29 points

The passenger compartment held its shape well in the frontal offset test. Pedal and steering wheel displacements were well controlled. Driver and passenger contact with the airbags was stable. All doors remained closed during the crash. After the crash, all doors could be opened with normal effort.

### Side Impact Test

Each body region is scored out of 4 points

Head:	4.00 points
Chest:	4.00 points
Abdomen:	4.00 points
Pelvis:	4.00 points

The side impact test normally used by ANCAP simulates a small car striking the driver's door of the test vehicle. Experience shows that large vehicles like the Navara can be expected to perform well in this test. ANCAP has adopted a policy of awarding these types of vehicles a default score of 16 points (out of 16).

### Pole Test

Scored out of 2 points

Score:	2.00 points
--------	-------------

The vehicle was eligible for a side pole test because it has side curtain airbags. The vehicle scored the maximum 2 points for head protection in this test.

### Whiplash Protection Test

Whiplash protection is assessed to the RCAR Protocol

Geometric test:	Good
Dynamic test:	Good
Overall whiplash rating:	Good

# ANCAP Safety Rating: NISSAN NAVARA SINGLE CAB (July 2015 onwards)



**ANCAP**

Safety ★★★★★



## Pedestrian Protection.

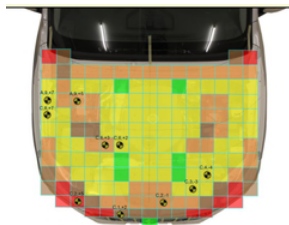
### Pedestrian Test

Scored out of 36 points

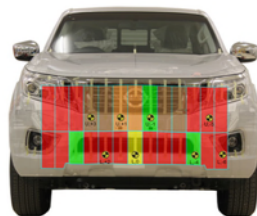
Adult & child head impacts: 14.48 points  
Upper leg impacts: 1.33 points  
Lower leg impacts: 2.57 points

This vehicle scored 18.38 out of 36 points (Marginal). The central bonnet area offered mostly acceptable protection to head impacts of pedestrians. The bumper scored mostly poor results showing poor protection for pedestrians' legs, with the bonnet leading edge also scoring poorly. (v8.0)

#### Child and adult head impact



#### Adult leg impact (upper and full legforms)



## Score Deductions.

### Deductions from frontal offset test scores

Head / neck: No deductions  
Chest: No deductions  
Upper legs: No deductions  
Lower legs: No deductions

### Deductions from side impact test score

High-seat vehicle: Default side impact score awarded.

### Deductions from pole test score

Head: No deductions

## OTHER

Independent assessment has shown that the 2015 ANCAP safety rating of this vehicle only is retained when fitted with:

- Nissan steel bullbar Part No. F2160-4KE1BAU (Narrow Body)
- Nissan steel bullbar Part No. F2160-4KE1AAU (Wide Body)
- Nissan alloy bullbar Part No. F2160-4KE0BAU (Narrow Body)
- Nissan alloy bullbar Part No. F2160-4KE0AAU (Wide Body)

ANCAP was provided with information to show that, with these bullbars fitted, the pedestrian protection rating remains "marginal". While this is still adequate for a 5-star safety rating the fitting of rigid metal bullbars does increase the serious injury risk for struck pedestrians, compared to a Navara without the bullbar fitted.

## Safety Features & Technologies.

Descriptions of each of these safety features and safety assist technologies (SAT) and detail on fitting requirements for each star rating level can be found at [ancap.com.au](http://ancap.com.au).

Safety Feature / Safety Assist Technology	Availability
Seat belts (three-point) for all forward-facing seats	S
Seat belt pretensioners (front)	S
Intelligent seat belt reminder (driver)	S
Intelligent seat belt reminder (front passenger)	S
Airbag - Front (driver)	S
Airbag - Front (passenger)	S
Airbag - Side, chest protection (front seats)	S
Airbag - Side, head protection (front seats)	S
Airbag - Knee (driver)	S
Airbag - Knee (front passenger)	X
Head restraints for all seats	S
Adaptive cruise control (ACC)	X
Antilock braking system (ABS)	S
Automatic headlights	S
Autonomous emergency braking (AEB)	X
Daytime running lights (DRL)	S
Electronic brakeforce distribution (EBD)	S
Electronic stability control (ESC)	S
Emergency brake assist (EBA)	S
Hill launch assist	X
Lane support system (LSS)	X
Reversing collision avoidance	X
Tyre pressure monitoring system (TPMS)	X

These specifications are subject to change. Please check with the manufacturer for the latest specifications.

S = Standard on all variants.

O = Optional on base variant. May be standard on higher variants.

V = Not available on base variant but standard or optional on higher variants.

X = Not available on any variant.

E = Available in Europe / USA but not available on any Australasian variant.

# ANCAP Safety Rating: NISSAN NAVARA SINGLE CAB (July 2015 onwards)



**ANCAP**  
Safety ★★★★★



## Injury Values & Measurements.

Body Region	Frontal offset test at 64 km/h (v5.1)		Side impact test at 50 km/h (v5.1)	
	Driver	Passenger	Driver	
<b>Head</b>				
HIC	763.00	459.00	HIGH-SEAT VEHICLE DEFAULT SCORE AWARDED	
Acceleration (g for 3ms)	68.20	53.10		
<b>Neck</b>				
Shear (kN)	0.71	0.38		
Tension (kN)	2.08	0.95		
Extension (Nm)	17.50	10.70		
<b>Chest</b>				
Acceleration (g for 3ms)	-	-		
Compression (mm)	30.95	23.10		
Viscous criterion (m/s)	0.09	0.08		
<b>Abdomen</b>				
Force (kN)	-	-		
<b>Pelvis</b>				
Force (kN)	-	-		
<b>Upper legs</b>				
Femur force left (kN)	2.01	0.13		
Femur force right (kN)	1.73	0.09		
Knee displacement left (mm)	3.39	0.36		
Knee displacement right (mm)	3.66	0.49		
<b>Lower legs</b>				
Force left (kN)	3.07	1.48		
Force right (kN)	2.14	1.50		
Index (upper / lower) left	0.38 / 0.23	0.40 / 0.20		
Index (upper / lower) right	0.30 / 0.42	0.51 / 0.25		
<b>Intrusion Measurements<sup>+</sup></b>				
<b>Steering column</b>				
Forward (mm)	34			
Upward (mm)	36			
Sideways (mm)	13			
<b>Pedals</b>				
Brake - rearward (mm)	52			
Throttle - upward (mm)	30			
<b>A-Pillar</b>				
Rearward (mm)	1			

+ Steering column and pedal movements are measured relative to the driver's seat.

\* ANCAP safety ratings do not automatically extend to variants that have different body styles, engine configurations, driven wheels or occupant restraint systems (e.g. fewer airbags). In these cases, ANCAP considers technical evidence submitted by manufacturers before deciding on extending a rating to additional variants of a model. For further information about the application of ANCAP safety ratings to model variants, see the ANCAP Variant Policy.

^ The Rating Year denotes the year requirements against which a vehicle has been assessed. The Rating Year is determined by ANCAP and may be based on the year in which a new vehicle model is first launched into the Australian and/or New Zealand markets; the year in which the vehicle was tested (if tested by Euro NCAP); or, for vehicles which hold an existing ANCAP safety rating, the year in which the rating was updated (or earlier applicable year).

## Assessment Details.

<b>Tested Make / Model</b>	Nissan Navara Diesel 4WD Dual Cab
<b>Tested Vehicle(s) Built</b>	2015
<b>Tested Body Type</b>	Utility
<b>Tested Vehicle Kerb Weight</b>	1990 kg
<b>Tested Vehicle Engine</b>	2.3 diesel
<b>Tested By</b>	ANCAP
<b>Assessed By</b>	ANCAP
<b>Document Reference</b>	NAVARA15SINGLE
<b>Document Created / Revised</b>	9/11/2015
<b>Rating Published</b>	July 2015