

Crash Test Results

New Car Safety

NISSAN MICRA

From July 2011 Front+side+head airbags



Offset crash test at 64km/h

FRONTAL OFFSET CRASH TEST

Body region scores out of 4 points each: Head/neck 4 pts, chest 3.71 pts, upper legs 4 pts, lower legs 1.08 pts.

The passenger compartment held its shape well in the offset crash test, except for pedal movement. The clutch pedal moved rearwards by 173 mm. The accelerator pedal moved upwards 42 mm. The steering wheel hub moved 29 mm rearward, 60 mm upward and 23 mm sideways. The front ("A") pillar moved 43 mm rearwards. All doors remained closed during the crash. After the crash all doors could be opened with normal effort.

The airbag cushioned the head of the driver and contact was stable, although there was some concern about twisting of the neck. The passenger's head was cushioned by the airbag. There were no knee hazards and no signs of knee contact for the inboard knee of the driver and passenger.

SIDE IMPACT CRASH TEST

Body region scores out of 4 points each: Head 4 pts, chest 3.32 pts, abdomen 4 pts, pelvis 4 pts.

Side impact and pole tests were conducted by Euro NCAP. Nissan provided information to ANCAP to demonstrate that the Euro NCAP results apply to the Australasian version.

The Micra earned the maximum two points in the pole test.

PEDESTRIAN PROTECTION: Acceptable

The bumper scored maximum points for the protection offered to pedestrians' legs. The front edge of the bonnet offered marginal protection in most areas tested. Child head protection was mostly good but adult head protection was mostly poor.

PEDESTRIAN PROTECTION	Child head impacts	9.43
ACCEPTABLE	Adult head impacts	4
	Upper leg impacts	1.58
	Lower leg impacts	6
	Total (out of 36)	21.01
	Tested by Euro NCAP v5	



Occupant Protection Score 31.11 out of 37

Variant: 5 door hatch Eng: 1.5 litre
Kerb mass: 960 kg Category: CAR - LIGHT
Test vehicles built: 2010 (Europe) and July 2011 (ANCAP)

Model History and Safety Features

The tested model of Nissan Micra was introduced in Australia in late 2010. This ANCAP rating applies to all 1.2 and 1.5 litre Micras built from July 2011, when several production changes were introduced for Australasia.

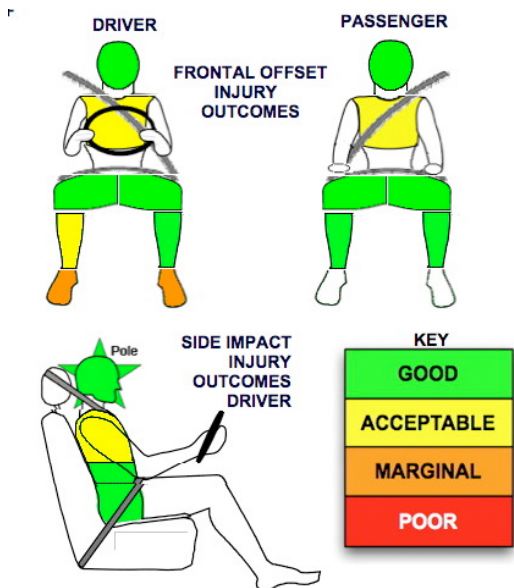
Dual front airbags, side airbags and head-protecting side curtains are standard equipment. Antilock brakes (ABS), electronic brake distribution (EBD) and electronic stability control (ESC) are also standard. An advanced seat belt reminder is fitted to the driver's seat.

Pretensioners are fitted to the front seat belts to reduce slack in the event of a crash. A three point seat belt is fitted to the centre rear seat. This provides better protection than a two point (lap) seat belt.

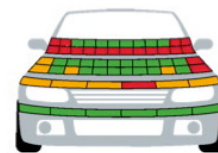
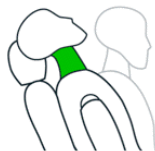
OCCUPANT PROTECTION: 4 Stars

The Micra scored 12.79 out of 16 in the offset crash test. The passenger compartment held its shape well except for pedal movement. There was a slight risk of serious chest injury for the driver and passenger and a moderate risk of driver foot injury.

The vehicle scored 15.32 out of 16 in the side impact crash test. There was a slight risk of serious chest injury for the driver. The vehicle scored a further two points in the pole test.



Whiplash Protection



— PASS
— MARGINAL
— FAIL

SEPTEMBER 2011

PO Box 4041
Manuka ACT 2603
micra11.doc
Issued 16/9/2011



ANCAP

Crash testing for safety

AUSTRALASIAN
NEW CAR ASSESSMENT
PROGRAM

www.ancap.com.au

TECHNICAL DATA - NISSAN MICRA - From July 2011

INJURY MEASUREMENTS

Body region	Offset Crash Test at 64km/h (v4.2)		Side Impact Crash Test at 50km/h (v5.1)
	Driver	Passenger	Driver
Head HIC	212	230	49
Acceleration (g for 3ms)	37.8	37.3	29.6
Neck - Shear (kN)	0.28	0.70	-
Tension (kN)	1.49	1.08	-
Extension (Nm)	26.0	6.9	-
Chest Accln (g for 3ms)	37.90	29.80	-
Compression (mm)	24.00	23.60	18.34
Viscous criterion (m/s)	0.09	0.07	0.13
Abdomen - Force (kN)	-	-	0.970
Pelvis - Force (kN)	-	-	2.310
Upper legs Force (kN)			
Left	0.09	0.57	
Right	0.58	0.53	
Knee displ (mm)			
Left	1.50	2.19	
Right	2.53	5.41	
Lower legs Force (kN)			
Left	1.13	1.28	
Right	1.16	1.51	
Index (Upper/Low)			
Left	0.39/0.29	0.23/0.20	
Right	0.30/0.68	0.26/0.35	

Bonus points (maximum 5)

Pole Test: 2 pts

Seat belt reminders: 1 (see table below for details)

Modifiers - deductions from offset test scores

Head No deduction
 Chest No deduction
 Upper leg Variable & conc. loading No deduction
 Lower leg No deduction
 Foot score Clutch rearward displacement Score 1.08 points
 Note: Steering column and pedal movements are measured relative to the driver's seat.

Modifiers - deductions from side impact test scores

Chest No deduction



Safety features

These specifications are subject to change. Please check with manufacturer for the latest specifications.

Driver airbag	S	Antilock (ABS) brakes / Electronic brake distribution / Brake Assist	S/S/S
Passenger front airbag	S	Electronic stability control (ESC, VSC, DSC, ESP, VSA)	S#
Side airbags, front seats - chest protection	S	3 point centre rear seat belt	S
Side airbags, front seats - head protection	S	Whiplash rating (RCAR Protocol)	Good
Side airbags, rear seats - head protection	S	Intelligent seat belt reminder - driver	S
Driver knee airbag	X	Intelligent seat belt reminder - front passenger	X
Seat belt pretensioners (Front/rear outboard)	S/X	Intelligent seat belt reminder - rear seats	X

Key:

S = standard on all variants

O = optional on base variant. May be standard on higher variants

V= not available on base variant but standard or optional on higher variants

X = not available on any variant

ESC required by ANCAP for 5 star rating from 2008