

ANCAP Safety Rating NISSAN ALTIMA (From 2013)



Test Vehicle(s).

Variant:	Nissan Altima ST
Kerb Mass:	1490 kg
Built:	2013
Engine:	2.5 Petrol
Category:	MEDIUM CAR
Variant Applicability*:	Applies to all variants



Frontal offset test at 64 km/h

Airbags	ESC	Frontal Offset	Side Impact	Pole	Whiplash	Pedestrian	Seat Belt Reminders	Overall Score	ANCAP Safety Rating
Frontal + Side + Head	Standard	15.42 (out of 16)	16.00 (out of 16)	2 (out of 2)	GOOD	ACCEPTABLE	3 (out of 3)	36.42 (out of 37)	★★★★★

The tested model of the Nissan Altima was introduced in Australia and New Zealand in December 2013. This ANCAP safety rating applies to all variants.

Dual frontal, side chest and side head airbags (curtains) are standard. Antilock brakes (ABS), electronic brake distribution (EBD) and electronic stability control (ESC) are also standard. Advanced seat belt reminders are fitted to all seats.

In the offset crash test driver leg protection was acceptable, In the offset crash test passenger protection was good. In the side impact and pole crash tests the driver head protection was good.

OCCUPANT PROTECTION

Frontal Offset Test.

Each body region is scored out of 4 points

Head / neck:	4.00 points
Chest:	4.00 points
Upper legs:	4.00 points
Lower legs:	3.42 points

The passenger compartment held its shape well in the offset test. Pedal and steering wheel displacements were well controlled. Driver and passenger contact with the airbags were stable. All doors remained closed during the crash. After the crash all doors could be opened with normal effort.

Side Impact Test.

Each body region is scored out of 4 points

Head:	4.00 points
Chest:	4.00 points
Abdomen:	4.00 points
Pelvis:	4.00 points

Good protection was provided for the driver in the side impact test. The side airbags performed well.

Pole Test.

Scored out of 2 points

The vehicle was eligible for a side pole test because it has side curtain airbags. The vehicle scored the maximum 2 points for head protection in this test.

Whiplash Protection Test.

Whiplash protection is assessed to the RCAR Protocol

Geometric test:	Good
Dynamic test:	Good
Overall whiplash rating:	GOOD

Injury Outcomes.

Frontal Offset Driver



Passenger



Side Impact & Pole Driver



Whiplash



ANCAP Safety Rating NISSAN ALTIMA (From 2013)



PEDESTRIAN PROTECTION

Pedestrian Test.

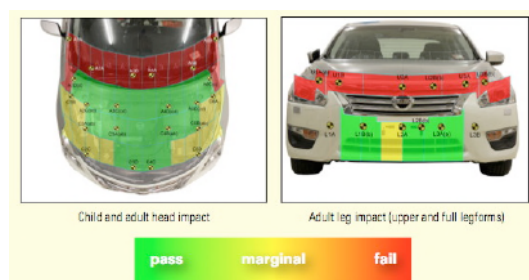
ACCEPTABLE - Scored 21.35 out of 36 points

Child head impacts: 10.55 points
 Adult head impacts: 5 points
 Upper leg impacts: 0 points
 Lower leg impacts: 5.8 points

Some points have been gained in the central area of the bonnet. The windscreen base area could be improved. The bumper area provided mostly good protection for the leg.



Nissan Altima



V5.3

SAFETY FEATURES

These specifications are subject to change. Please check with manufacturer for the latest specifications. For a description of these safety features and safety rating requirements see the ANCAP Rating Road Map.

Safety Assist Technology (SAT)	Availability
Front airbag - driver	S
Front airbag - passenger	S
Side airbags (chest protection) - front seats	S
Side airbags (head protection) - front seats	S
Side airbags (head protection) - 2nd row seats	S
Knee airbag - driver	X
Three-point seat belts for all forward facing seats	S
Seat belt pretensioners (front / rear outboard)	S / X
Intelligent seat belt reminder - driver	S
Intelligent seat belt reminder - front passenger	S
Intelligent seat belt reminder - 2nd row seats	S
Head restraints for all seats	S
Antilock brakes (ABS)	S
Electronic brake distribution (EBD)	S
Emergency brake assist (EBA)	S
Electronic stability control (ESC)	S
Automatic headlamps	S
Reversing collision warning	V
Adaptive cruise control (ACC)	X
Autonomous emergency braking (AEB)	X
Blind spot warning	V
Lane support system	V

S = Standard on all variants.
 O = Optional on base variant. May be standard on higher variants.
 V = Not available on base variant but standard or optional on higher variants.
 X = Not available on any variant.

INJURY MEASUREMENTS

Body Region	Frontal offset test at 64 km/h (v5.1)		Side impact test at 50 km/h (v5.1)
	Driver	Passenger	Driver
Head			
HIC	172.00	182.00	43.00
Acceleration (g for 3ms)	31.40	34.50	22.10
Neck			
Shear (kN)	0.33	0.52	-
Tension (kN)	0.97	0.87	-
Extension (Nm)	17.20	27.90	-
Chest			
Acceleration (g for 3ms)	-	-	-
Compression (mm)	21.40	20.10	16.10
Viscous criterion (m/s)	0.05	0.06	0.06
Abdomen			
Force (kN)	-	-	0.56
Pelvis			
Force (kN)	-	-	2.02
Upper legs			
Femur force left (kN)	0.15	0.50	
Femur force right (kN)	0.24	0.45	
Knee displacement left (mm)	0.44	0.65	
Knee displacement right (mm)	0.18	0.50	
Lower legs			
Force left (kN)	1.33	1.50	
Force right (kN)	1.52	1.83	
Index (upper / lower) left	0.38 / 0.31	0.24 / 0.14	
Index (upper / lower) right	0.53 / 0.36	0.24 / 0.22	

INTRUSION MEASUREMENTS

Steering Column

Forwards:	37mm
Downwards:	49mm
Sideways:	2mm

Pedals

Accel (rearwards):	51mm
Accel (upwards):	11mm
A-Pillar (rearwards):	3mm

SCORE DEDUCTIONS

Deductions from frontal offset test scores

No deductions for offset test

Note: Steering column and pedal movements are measured relative to the driver's seat.

Deductions from side impact test score

No deductions for side impact test.

Deductions from pole test score

No deductions for pole test.

* For information about the application of ANCAP ratings to model variants see the ANCAP Variant Policy. In brief, ratings do not automatically extend to variants that have different body styles, engine configurations, driven wheels or occupant restraint systems (e.g. fewer airbags). In these cases ANCAP considers technical evidence submitted by manufacturers before deciding on extending a rating to additional variants of a model.

^ Refer ANCAP Rating Road Map (www.ancap.com.au/media).

DOCUMENT REF: ALTIMA13
CREATED / REVISED: 14/12/2013