

Crash Test Results

New Car Safety

MITSUBISHI TRITON 4x4

2006 on

Dual front airbags



ANCAP

Rated ★★★★★

Occupant Protection

Occupant Protection Score 25.08 out of 37

Variant: GLX DUAL CAB Eng: 3.2 diesel

Kerb weight: 1930 kg Category: UTILITY

Vehicle built: 8/06

Model History and Safety Features

The tested model of Mitsubishi Triton 4x4 was introduced in Australia during 2006.

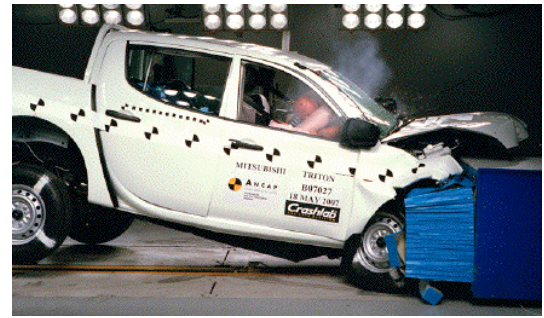
Dual front airbags are standard. Antilock brakes (ABS) with electronic brake distribution (EBD) are optional on the base variant. Side airbags and electronic stability control are not available.

The front seat belt buckles are mounted on the seats and the upper anchorages are adjustable. These features improve the fit of the seat belt. Pre-tensioners are fitted to the front seat belts to reduce slack in the event of a crash.

OCCUPANT PROTECTION: 4 Stars

The Mitsubishi Triton 4x4 scored 9.08 out of 16 in the offset crash test. The passenger compartment held its shape well. Protection from serious leg injury was marginal for the driver. There was a moderate risk of serious chest injury for the driver and passenger.

The vehicle was awarded a default score of 16 out of 16 in the side impact crash test.



Offset crash test at 64km/h

FRONTAL OFFSET CRASH TEST (v4.1)

Body region scores out of 4 points each: Head/neck 4 pts, chest 1.87 pts, upper legs 0.99 pts, lower legs 2.22 pts.

The passenger compartment held its shape well in the offset crash test. The clutch pedal moved rearwards by 74 mm and downwards 3mm. The steering wheel hub moved forwards 16mm, upwards 49 mm and sideways 8 mm. The front ("A") pillar moved 53 mm rearwards. All doors remained closed during the crash. After the crash high manual effort was required to open the driver's door.

The airbag cushioned the head of the driver and contact was stable. Steering column components were a potential source of injury for the driver's knees. The passenger's head was cushioned by the airbag.

SIDE IMPACT CRASH TEST (v4.1)

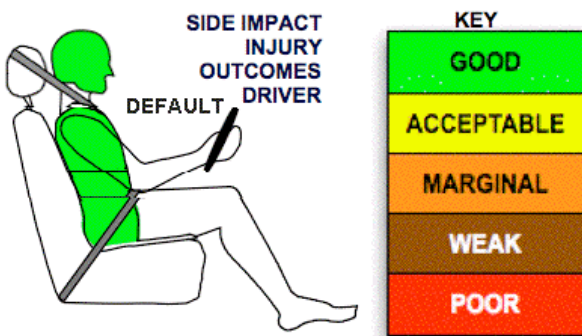
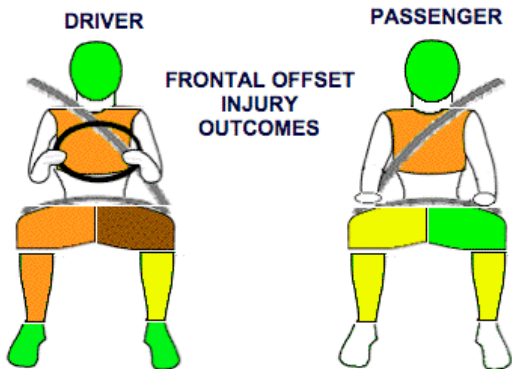
Default 16 points awarded for side impact test.

The side impact test normally used by ANCAP simulates a small car striking the driver's door of the vehicle under test. It is based on a regulation test but the regulation does not apply to vehicles with a high seat height like the Triton. Experience shows that such vehicles can be expected to perform well in this test so ANCAP has decided to award full score for these vehicles instead of conducting a crash test.

The vehicle was not eligible for a Pole Impact Test since it did not have head-protecting side airbags. This test can earn eligible vehicles an extra two points.

PEDESTRIAN PROTECTION RATING (v4.1)

PEDESTRIAN PROTECTION		
<p>Rated ★★★★★</p>	Child head impacts	0.31
	Adult head impacts	0.96
	Upper leg impacts	Zero
	Lower leg impacts	2
	Total (out of 36)	3.27



Child and adult head impact

Adult leg impact (upper and full legforms)



June 2007

PO Box 1555
 Canberra ACT
 Australia 2601
 triton406.doc
 Issued 6/6/07



ANCAP

Crash testing for safety

AUSTRALASIAN
 NEW CAR ASSESSMENT
 PROGRAM

TECHNICAL DATA - MITSUBISHI TRITON4X4 - 2006 on

INJURY MEASUREMENTS

Body region	Offset Crash Test at 64km/h (v4.1)		Side Impact Crash Test at 50km/h (v)
	Driver	Passenger	Driver
Head HIC	426	409	Default Score awarded
Acceleration (g for 3ms)	48.4	49.6	
Neck - Shear (kN)	0.30	0.71	
Tension (kN)	1.72	1.78	
Extension (Nm)	20.5	15.2	
Chest Accln (g for 3ms)	44.800	36.800	
Compression (mm)	36.90	32.80	
Viscous criterion (m/s)	0.21	0.17	
Abdomen - Force (kN)	-	-	
Pelvis - Force (kN)	-	-	
Upper legs Force			
Left (kN)	1.94	0.56	
Right (kN)	0.88	3.76	
Knee displ (mm)			
Left	8.28	1.26	
Right	0.93	1.18	
Lower legs Force			
Left (kN)	2.47	3.30	
Right (kN)	3.61	3.05	
Index (Upper/Low)			
Left	0.42 /0.49	0.47 /0.19	
Right	0.67 /0.80	0.38/0.41	

Bonus points (maximum 5)

Pole Test: Not eligible due to a lack of head-protecting side airbags

Seat belt reminders: None

Modifiers - deductions from offset test scores

Head No deduction

Chest No deduction

Upper leg Variable & conc. loading 2 pt deduction Left & Right

Lower leg No deduction

Foot score Score 4 points

Note: Steering column and pedal movements are measured relative to the driver's seat.



Modifiers - deductions from side impact test scores

Default score awarded

Safety features

These specifications are subject to change. Please check with manufacturer for the latest specifications.

Feature	Standard (S)	Optional (O/O)	Not Available (X)
Driver airbag	S	Antilock (ABS) brakes / Electronic brake distribution	O/O
Passenger front airbag	S	Electronic stability control (ESC, VSC, DSC, ESP, VSA)	X
Side airbags, front seats - chest protection	X	3 point centre rear seat belt	-
Side airbags, front seats - head protection	X	Active head restraints - front seats	X
Side airbags, rear seats - head protection		Intelligent seat belt reminder - driver	X
Driver knee airbag	X	Intelligent seat belt reminder - front passenger	X
Front seat belt pretensioners	S	Rear seat belt status indicator	X

Key:

S = standard on all variants

O = optional on base variant. May be standard on higher variants

V= not available on base variant but standard or optional on higher variants

X = not available on any variant