

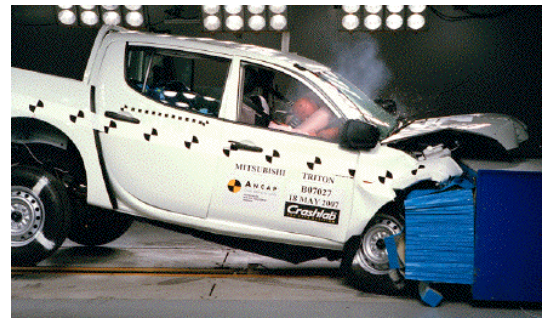
# Crash Test Results

## New Car Safety

### MITSUBISHI TRITON (all variants)

2006 on

Dual front airbags



Offset crash test at 64km/h

#### FRONTAL OFFSET CRASH TEST (v4.1)

Body region scores out of 4 points each: Head/neck 4 pts, chest 1.87 pts, upper legs 0.99 pts, lower legs 2.22 pts.

The passenger compartment held its shape well in the offset crash test. The clutch pedal moved rearwards by 74 mm and downwards 3mm. The steering wheel hub moved forwards 16mm, upwards 49 mm and sideways 8 mm. The front ("A") pillar moved 53 mm rearwards. All doors remained closed during the crash. After the crash high manual effort was required to open the driver's door.

The airbag cushioned the head of the driver and contact was stable. Steering column components were a potential source of injury for the driver's knees. The passenger's head was cushioned by the airbag.


#### SIDE IMPACT CRASH TEST (v4.1)

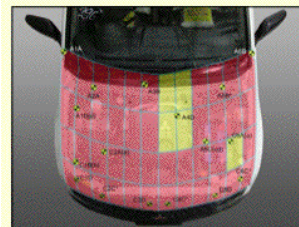
Default 16 points awarded for side impact test.

The side impact test normally used by ANCAP simulates a small car striking the driver's door of the vehicle under test. It is based on a regulation test but the regulation does not apply to vehicles with a high seat height like the Triton. Experience shows that such vehicles can be expected to perform well in this test so ANCAP has decided to award full score for these vehicles instead of conducting a crash test.

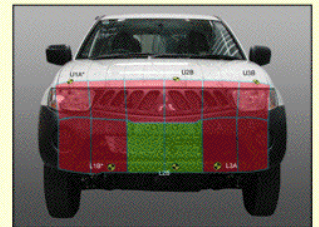
The vehicle was not eligible for a Pole Impact Test. This test can earn eligible vehicles an extra two points.

#### PEDESTRIAN PROTECTION RATING (v4.1)

PEDESTRIAN PROTECTION		
 <b>ANCAP</b> Rated ★ ★ ★ ★	Child head impacts	0.31
	Adult head impacts	0.96
	Upper leg impacts	Zero
	Lower leg impacts	2
	<b>Total (out of 36)</b>	<b>3.27</b>



Child and adult head impact



Adult leg impact (upper and full legforms)

fair      marginal      poor

**Occupant Protection Score 25.08 out of 37**

Tested variant: GLX 4x4 DUAL CAB Eng: 3.2 diesel

Kerb weight: 1930 kg Category: UTILITY

Vehicle built: 8/06

#### Model History and Safety Features

The tested model of Mitsubishi Triton was introduced in Australia during 2006. Mitsubishi provided evidence to ANCAP that all variants of the Triton can be expected to provide comparable front occupant protection to the tested 4x4 Dual Cab. This 4-star ANCAP rating applies to all Triton variants built from 2006 (Dual Cab and Single Cab, 4x4 & 4x2).

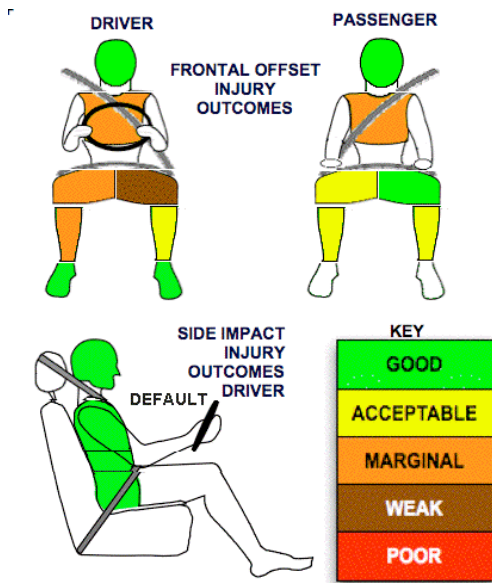
Dual front airbags are standard. Antilock brakes (ABS) with electronic brake distribution (EBD) are optional on the base variants. Side airbags, side curtains and electronic stability control (ESC) are available on some variants from October 2009. These are recommended by ANCAP but are not required for the 4-star rating.

Pre-tensioners are fitted to the front seat belts to reduce slack in the event of a crash.

#### OCCUPANT PROTECTION: 4 Stars

The Mitsubishi Triton 4x4 scored 9.08 out of 16 in the offset crash test. The passenger compartment held its shape well. Protection from serious leg injury was marginal for the driver. There was a moderate risk of serious chest injury for the driver and passenger.

The vehicle was awarded a default score of 16 out of 16 in the side impact crash test.



December 2009

PO Box 1555

Canberra ACT  
Australia 2601

triton09.doc

Issued 15/12/2009



**ANCAP**

Crash testing for safety

AUSTRALASIAN  
NEW CAR ASSESSMENT  
PROGRAM

# TECHNICAL DATA - MITSUBISHI TRITON - 2006 on

## INJURY MEASUREMENTS

Body region	Offset Crash Test at 64km/h (v4.1)		Side Impact Crash Test at 50km/h (v)
	Driver	Passenger	Driver
<b>Head HIC</b>	426	409	Default Score awarded
Acceleration (g for 3ms)	48.4	49.6	
<b>Neck - Shear (kN)</b>	0.30	0.71	
Tension (kN)	1.72	1.78	
Extension (Nm)	20.5	15.2	
<b>Chest Accln (g for 3ms)</b>	44.800	36.800	
Compression (mm)	36.90	32.80	
Viscous criterion (m/s)	0.21	0.17	
<b>Abdomen - Force (kN)</b>	-	-	
<b>Pelvis - Force (kN)</b>	-	-	
<b>Upper legs Force</b>			
Left (kN)	1.94	0.56	
Right (kN)	0.88	3.76	
<b>Knee displ (mm)</b>			
Left	8.28	1.26	
Right	0.93	1.18	
<b>Lower legs Force</b>			
Left (kN)	2.47	3.30	
Right (kN)	3.61	3.05	
<b>Index (Upper/Low)</b>			
Left	0.42 /0.49	0.47 /0.19	
Right	0.67 /0.80	0.38/0.41	

### Bonus points (maximum 5)

Pole Test: Not eligible

Seat belt reminders: None

### Modifiers - deductions from offset test scores

Head No deduction  
 Chest No deduction  
 Upper leg Variable & conc. loading 2 pt deduction Left & Right  
 Lower leg No deduction  
 Foot score Score 4 points

Note: Steering column and pedal movements are measured relative to the driver's seat.

### Modifiers - deductions from side impact test scores

Default score awarded

### Safety features (October 2009)

These specifications are subject to change. Please check with manufacturer for the latest specifications.



Driver airbag	S	Antilock (ABS) brakes / Electronic brake distribution/Emergency Brake Assist	O/O/X
Passenger front airbag	S	Electronic stability control (ESC, VSC, DSC, ESP, VSA)	V#
Side airbags, front seats - chest protection	V	3 point centre rear seat belt	V (D/cab)
Side airbags, front seats - head protection	V	Active head restraints - front seats	X
Side airbags, rear seats - head protection	V	Intelligent seat belt reminder - driver	X
Driver knee airbag	X	Intelligent seat belt reminder - front passenger	X
Seat belt pretensioners - front/rear outboard	S/X	Rear seat belt status indicator	X

Key:

S = standard on all variants

O = optional on base variant. May be standard on higher variants

V= not available on base variant but standard or optional on higher variants

X = not available on any variant

# ESC required by ANCAP for 5 star rating from 2008



**ANCAP**

Crash testing for safety

AUSTRALASIAN  
NEW CAR ASSESSMENT  
PROGRAM