

ANCAP Safety Rating:

# MITSUBISHI PAJERO SPORT

(October 2015 - onwards)



ANCAP

Safety ★★★★★



Mitsubishi Pajero Sport

## This ANCAP safety rating applies to:

<b>Make / Model</b>	Mitsubishi Pajero Sport
<b>Year Range</b>	October 2015 - onwards
<b>Variants*</b>	All variants
<b>Vehicle Type</b>	Large SUV

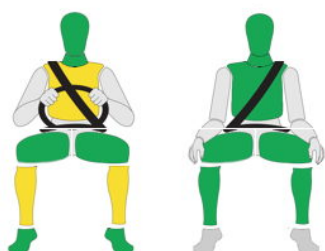
The Mitsubishi Pajero Sport was introduced in Australia and New Zealand in December 2015. This ANCAP safety rating is based on ANCAP tests of the Mitsubishi Triton utility. ANCAP was provided with evidence showing that the results apply to the Pajero Sport SUV, which is based on the Triton.

Dual frontal, side chest, driver knee and side head airbags (curtains) are standard. Electronic Brake Distribution (EBD) and Emergency Brake Assist (EBA), are also standard. Advanced seat belt reminders are fitted to all seats.

## Injury Outcomes.

### Frontal Offset

Driver Passenger



### Side Impact & Pole\*



### Whiplash Protection

Driver



## Test Results Summary.

<b>Airbags</b>	Dual Frontal, Side, Head, Driver knee
<b>Frontal Offset Test</b>	15.22 (out of 16)
<b>Side Impact Test</b>	16.00 (out of 16)
<b>Pole Test</b>	2 (out of 2)
<b>Whiplash Protection</b>	Good
<b>Pedestrian Protection</b>	Acceptable
<b>ESC</b>	Standard
<b>Seat Belt Reminders</b>	3.0 (out of 3)
<b>Overall Score</b>	36.22 (out of 37)
<b>ANCAP Safety Rating</b>	★★★★★
<b>Rating Year<sup>^</sup></b>	2015

## Occupant Protection.

### Frontal Offset Test

Each body region is scored out of 4 points

Head / neck:	4.00 points
Chest:	3.97 points
Upper legs:	4.00 points
Lower legs:	3.24 points

The passenger compartment held its shape well in the offset test, although there was some deformation of the rear floorpan behind the driver. Pedal and steering wheel displacements were well controlled. Driver and passenger contact with the airbags was stable. All doors remained closed during the crash. High manual effort was needed to open the driver door after the crash.

### Side Impact Test

Each body region is scored out of 4 points

Head:	4.00 points
Chest:	4.00 points
Abdomen:	4.00 points
Pelvis:	4.00 points

The side impact test normally used by ANCAP simulates a small car striking the driver's door of the test vehicle. Experience shows that large vehicles like the Pajero Sport can be expected to perform well in this test. ANCAP has adopted a policy of awarding these types of vehicles a default score of 16 points (out of 16).

### Pole Test

Scored out of 2 points

Score:	2.00 points
--------	-------------

The vehicle was eligible for a side pole test because it has side curtain airbags. The vehicle scored the maximum 2 points for head protection in this test.

### Whiplash Protection Test

Whiplash protection is assessed to the RCAR Protocol

Geometric test:	Good
Dynamic test:	Good
Overall whiplash rating:	Good

Based on IIHS tests

\* Head protection only.



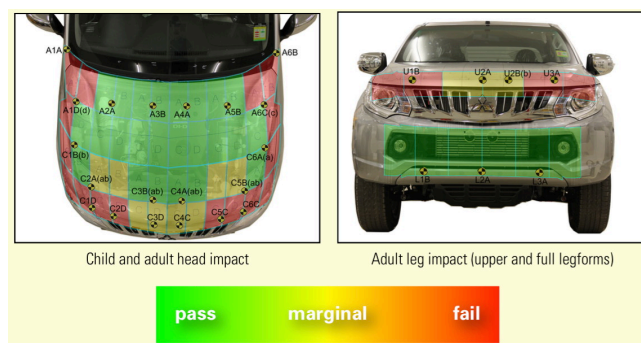
## Pedestrian Protection.

### Pedestrian Test

Scored out of 36 points

Adult & child head impacts: 14.16 points  
 Upper leg impacts: 0.86 points  
 Lower leg impacts: 6.00 points

This rating is based on ANCAP tests of the Triton, which scored 21.02 out of 36 points (Acceptable). Good results were obtained in the central area of the bonnet and across the bumper. Some points were gained in the centre of the bonnet leading edge but the outer edges were poor. (v5.3)



## Safety Features & Technologies.

Descriptions of each of these safety features and safety assist technologies (SAT) and detail on fitting requirements for each star rating level can be found at [ancap.com.au](http://ancap.com.au).

Safety Feature / Safety Assist Technology	Availability
Seat belts (three-point) for all forward-facing seats	<b>S</b>
Seat belt pretensioners (front)	<b>S</b>
Seat belt pretensioners (rear outboard)	<b>X</b>
Intelligent seat belt reminder (driver)	<b>S</b>
Intelligent seat belt reminder (front passenger)	<b>S</b>
Intelligent seat belt reminder (2 <sup>nd</sup> row seats)	<b>S</b>
Airbag - Front (driver)	<b>S</b>
Airbag - Front (passenger)	<b>S</b>
Airbag - Side, chest protection (front seats)	<b>S</b>
Airbag - Side, chest protection (2 <sup>nd</sup> row seats)	<b>X</b>
Airbag - Side, head protection (front seats)	<b>S</b>
Airbag - Side, head protection (2 <sup>nd</sup> row seats)	<b>S</b>
Airbag - Knee (driver)	<b>S</b>
Airbag - Knee (front passenger)	<b>X</b>
Head restraints for all seats	<b>S</b>
Adaptive cruise control (ACC)	<b>X</b>
Antilock braking system (ABS)	<b>S</b>
Autonomous emergency braking (AEB)	<b>V</b>
Daytime running lights (DRL)	<b>S</b>
Electronic brakeforce distribution (EBD)	<b>S</b>
Electronic stability control (ESC)	<b>S</b>
Emergency brake assist (EBA)	<b>S</b>
Hill launch assist	<b>S</b>
Lane support system (LSS)	<b>V</b>
Reversing collision avoidance	<b>S</b>
Trailer stability control	<b>S</b>
Tyre pressure monitoring system (TPMS)	<b>X</b>

These specifications are subject to change. Please check with the manufacturer for the latest specifications.

- S** = Standard on all variants.
- O** = Optional on base variant. May be standard on higher variants.
- V** = Not available on base variant but standard or optional on higher variants.
- X** = Not available on any variant.
- E** = Available in Europe / USA but not available on any Australasian variant.

## Score Deductions.

### Deductions from frontal offset test scores

Head / neck: No deductions  
 Chest: No deductions  
 Upper legs: No deductions  
 Lower legs: No deductions

### Deductions from side impact test score

Chest: High-seat vehicle: default side impact score awarded.

### Deductions from pole test score

Head: No deductions.

ANCAP Safety Rating:

# MITSUBISHI PAJERO SPORT

(October 2015 - onwards)



**ANCAP**

Safety ★★★★★



## Injury Values & Measurements.

Body Region	Frontal offset test at 64 km/h (v5.1)		Side impact test at 50 km/h (v5.1)	
	Driver	Passenger	Driver	
<b>Head</b>				
HIC	547.00	306.00	HIGH-SEAT VEHICLE DEFAULT SCORE AWARDED	
Acceleration (g for 3ms)	59.20	42.80		
<b>Neck</b>				
Shear (kN)	0.54	0.35		
Tension (kN)	2.10	1.13		
Extension (Nm)	25.60	5.90		
<b>Chest</b>				
Acceleration (g for 3ms)	-	-		
Compression (mm)	22.18	21.10		
Viscous criterion (m/s)	0.08	0.04		
<b>Abdomen</b>				
Force (kN)	-	-		
<b>Pelvis</b>				
Force (kN)	-	-		
<b>Upper legs</b>				
Femur force left (kN)	0.70	0.18		
Femur force right (kN)	0.87	0.52		
Knee displacement left (mm)	1.29	0.16		
Knee displacement right (mm)	0.72	0.31		
<b>Lower legs</b>				
Force left (kN)	1.88	1.27		
Force right (kN)	2.52	1.30		
Index (upper / lower) left	0.57 / 0.29	0.26 / 0.21		
Index (upper / lower) right	0.47 / 0.51	0.40 / 0.32		
<b>Intrusion Measurements<sup>+</sup></b>				
<b>Steering column</b>				
Forward (mm)	69			
Downward (mm)	57			
Sideways (mm)	8			
<b>Pedals</b>				
Throttle - rearward (mm)	76			
Throttle - downward (mm)	27			
<b>A-Pillar</b>				
Forward (mm)	5			

+ Steering column and pedal movements are measured relative to the driver's seat.

\* ANCAP safety ratings do not automatically extend to variants that have different body styles, engine configurations, driven wheels or occupant restraint systems (e.g. fewer airbags). In these cases, ANCAP considers technical evidence submitted by manufacturers before deciding on extending a rating to additional variants of a model. For further information about the application of ANCAP safety ratings to model variants, see the ANCAP Variant Policy.

^ The Rating Year denotes the year requirements against which a vehicle has been assessed. The Rating Year is determined by ANCAP and may be based on the year in which a new vehicle model is first launched into the Australian and/or New Zealand markets; the year in which the vehicle was tested (if tested by Euro NCAP); or, for vehicles which hold an existing ANCAP safety rating, the year in which the rating was updated (or earlier applicable year).

## Assessment Details.

<b>Tested Make / Model</b>	Mitsubishi Triton Dual Cab
<b>Tested Vehicle(s) Built</b>	2015
<b>Tested Body Type</b>	Utility
<b>Tested Vehicle Kerb Weight</b>	1930 kg
<b>Tested Vehicle Engine</b>	2.4 litre turbo diesel
<b>Tested By</b>	ANCAP
<b>Assessed By</b>	ANCAP
<b>Document Reference</b>	PAJEROSPORT15
<b>Rating Published</b>	December 2015
<b>Document created/revised</b>	17 November 2015
<b>Rating Updated</b>	N/A



Mitsubishi Triton Frontal offset test at 64km/h