

Crash Test Results

New Car Safety

MITSUBISHI PAJERO

From 2006 Front+side+head airbags



ANCAP Occupant Protection
Rated ★★★★★

Occupant Protection Score 28.41 out of 37

Variant: GL Eng: 3.8 diesel, manual
Kerb mass: 2270 kg Category: SUV - LARGE
Vehicles built: 2010

Model History and Safety Features

The tested model of Mitsubishi Pajero was introduced in Australia during 2006. This 4 star ANCAP rating applies to all variants, with or without side airbags and curtains.

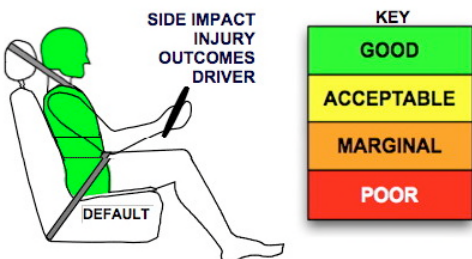
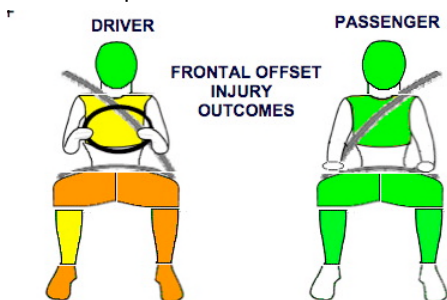
Dual front airbags, side airbags and head-protecting side curtains are now standard equipment. Antilock brakes (ABS), electronic brake distribution (EBD) and electronic stability control (ESC) are also standard. An advanced seat belt reminder is fitted to the driver seat. A reversing camera is available for some variants.

Pretensioners are fitted to the front seat belts to reduce slack in the event of a crash. A three point seat belt is fitted to the centre rear seat. This provides better protection than a two point (lap) seat belt.

OCCUPANT PROTECTION: 4 Stars

The Pajero scored 11.41 out of 16 in the offset crash test. The passenger compartment held its shape reasonably well. Protection from serious leg injury was marginal for the driver.

The vehicle was awarded a default score of 16 out of 16 in the side impact crash test.



Offset crash test at 64km/h

FRONTAL OFFSET CRASH TEST

Body region scores out of 4 points each: Head/neck 4 pts, chest 3.90 pts, upper legs 2 pts, lower legs 1.51 pts.

The passenger compartment held its shape reasonably well in the offset crash test. There were signs of loss of integrity for the a-pillar and driver's door and rupture of the footwell. The clutch pedal moved rearwards by 130 mm and upwards 66 mm. The steering wheel hub moved 16 mm rearward, 68 mm upward and 13 mm sideways. The front ("A") pillar moved 41 mm rearwards. All doors remained closed during the crash. After the crash the driver's door could be opened with high manual effort. The tailshaft moved sideways and contacted the fuel tank shield. The tank was undamaged.

The airbag cushioned the head of the driver and contact was stable. Steering column components were a potential source of injury for the driver's knees. The passenger's head was cushioned by the airbag.

SIDE IMPACT CRASH TEST

Body region scores out of 4 points each: Head 4 pts, chest 4 pts, abdomen 4 pts, pelvis 4 pts.

The side impact test normally used by ANCAP simulates a small car striking the driver's door of the vehicle under test. It is based on a regulation test but the regulation does not apply to vehicles with a high seat height like the Pajero. Experience shows that such vehicles can be expected to perform well in this test so ANCAP has decided to award full score for these vehicles instead of conducting a crash test. No pole test was conducted.

PEDESTRIAN PROTECTION: POOR

All areas except the middle of the bumper performed poorly.

PEDESTRIAN PROTECTION	Child head impacts	Zero
POOR	Adult head impacts	Zero
	Upper leg impacts	Zero
	Lower leg impacts	2
	Total (out of 36)	2
	v5.2	



Child and adult head impact



Adult leg impact (upper and full legforms)

pass marginal fail

MAY 2011

PO Box 4041
Manuka ACT 2603
pajero11.doc
Issued 12/5/2011



ANCAP
Crash testing for safety
AUSTRALASIAN
NEW CAR ASSESSMENT
PROGRAM

TECHNICAL DATA - MITSUBISHI PAJERO - 2006 on

INJURY MEASUREMENTS

Body region	Offset Crash Test at 64km/h (v4.2)		Side Impact Crash Test at 50km/h (v)
	Driver	Passenger	Driver
Head HIC	231	302	Default score awarded
Acceleration (g for 3ms)	41.2	41.9	
Neck - Shear (kN)	0.60	0.58	
Tension (kN)	0.84	1.29	
Extension (Nm)	11.7	24.9	
Chest Accln (g for 3ms)	48.300	33.600	
Compression (mm)	22.73	19.90	
Viscous criterion (m/s)	0.07	0.05	
Abdomen - Force (kN)	-	-	
Pelvis - Force (kN)	-	-	
Upper legs Force (kN)			
Left	0.13	0.38	
Right	0.25	1.37	
Knee displ (mm)			
Left	0.14	0.10	
Right	0.05	4.65	
Lower legs Force (kN)			
Left	1.42	1.55	
Right	2.16	1.66	
Index (Upper/Low)			
Left	0.27 /0.96	0.28 /0.15	
Right	0.44 /0.23	0.35/0.38	

Bonus points (maximum 5)

Pole Test: Not tested

Seat belt reminders: 1 (see table below for details)

Modifiers - deductions from offset test scores

Head No deduction
 Chest No deduction
 Upper leg Variable & conc. loading 2 pt deduction Left & Right
 Lower leg No deduction
 Foot score Pedal displacement and footwell rupture Score 1.8 points
 Note: Steering column and pedal movements are measured relative to the driver's seat.

Modifiers - deductions from side impact test scores

Default score

Safety features (2011 model year)

These specifications are subject to change. Please check with manufacturer for the latest specifications.



Driver airbag	S	Antilock (ABS) brakes / Electronic brake distribution / Brake Assist	S/S/S
Passenger front airbag	S	Electronic stability control (ESC, VSC, DSC, ESP, VSA)	S#
Side airbags, front seats - chest protection	S	3 point centre rear seat belt	S
Side airbags, front seats - head protection	S	Whiplash rating (RCAR Protocol)	Pending
Side airbags, rear seats - head protection	S	Intelligent seat belt reminder - driver	S
Driver knee airbag	X	Intelligent seat belt reminder - front passenger	X
Seat belt pretensioners (Front/rear outboard)	S/X	Intelligent seat belt reminder - rear seats	X

Key: Some safety features might not be standard in earlier years or for custom-ordered vehicles

S = standard on all variants

O = optional on base variant. May be standard on higher variants

V= not available on base variant but standard or optional on higher variants

X = not available on any variant

ESC required by ANCAP for 5 star rating from 2008