

Crash Test Results

New Car Safety

MITSUBISHI OUTLANDER

From Dec 2012 Front+side+head+knee airbags



ANCAP

Safety ★★★★★

Safety Rating

Occupant Protection Score 35.58 out of 37

Tested variant: Intense 2WD Eng: 2.2 diesel

Kerb mass 1500 kg Category: SUV - MEDIUM

Vehicles built: 2012 Tested by Euro NCAP

Important note: The diesel left-hand-drive European model was tested by Euro NCAP. ANCAP was provided with technical information which showed that Australian variants have comparable occupant protection to the tested European vehicle model.

Model History and Safety Features

The tested model of Mitsubishi Outlander was introduced in Australia late in 2012. This rating applies to all variants.

Driver and passenger front airbags, side airbags, head-protecting side curtains and a driver knee airbag are standard equipment. Antilock brakes (ABS), electronic brakeforce distribution (EBD) and electronic stability control (ESC) are also standard. Autonomous emergency braking (AEB) and adaptive cruise control are available on some higher variants. Intelligent seat belt reminders are fitted to the front seats.

Pretensioners are fitted to the front seat belts to reduce slack in the event of a crash.

OCCUPANT PROTECTION: 5 Stars

The Outlander scored 15.58 out of 16 in the offset crash test. The passenger compartment held its shape well. There was a slight risk of serious chest and leg injury for the driver and passenger.

The vehicle scored 16 out of 16 in the side impact crash test and a further two points in the pole test.



Offset crash test at 64km/h (Euro NCAP)

FRONTAL OFFSET CRASH TEST

Body region scores out of 4 points each: Head/neck 4pts, chest 3.80 pts, upper legs 4 pts, lower legs 3.78 pts.

The passenger compartment held its shape well in the offset crash test. The brake pedal moved rearwards by 84 mm and was blocked at 78mm. The accelerator pedal moved upwards 12 mm. The steering wheel hub moved 8mm forward, 55mm downward and 12 mm sideways. The front ("A") pillar moved 4 mm rearwards. All doors remained closed during the crash. After the crash all doors could be opened with normal effort.

The airbag cushioned the head of the driver and contact was stable. There were no knee hazards. The passenger's head was cushioned by the airbag.

SIDE IMPACT CRASH TEST

Body region scores out of 4 points each: Head 4 pts, chest 4 pts, abdomen 4 pts, pelvis 4 pts.

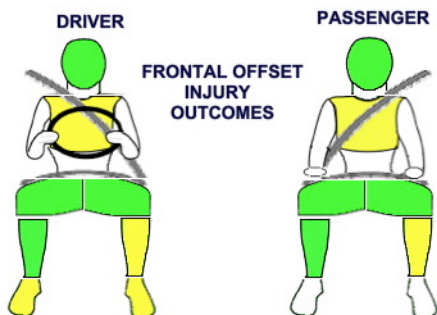
Full points were earned in the side impact test. The vehicle was eligible for a pole impact test, since it had head-protecting side airbags and it earned the maximum two points in this test.

PEDESTRIAN PROTECTION: Acceptable

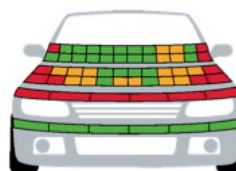
The bumper provided good protection to pedestrians' legs and scored maximum points. However, the front edge of the bonnet offered poor protection in all areas tested. In those areas likely to be struck by the head of a child, protection was predominantly marginal or poor. However, good protection was offered in most areas likely to be struck by an adult's head.

PEDESTRIAN PROTECTION	Child head impacts	7.07
ACCEPTABLE	Adult head impacts	9.83
	Upper leg impacts	Zero
	Lower leg impacts	6
	Total (out of 36)	22.90

Tested by Euro NCAP v5.3



Whiplash Protection (RCAR Protocol)



Legend for Whiplash Protection and Pedestrian Protection:
Green: PASS
Yellow: MARGINAL
Red: FAIL

DECEMBER 2012

PO Box 4041

Manuka ACT 2603

outlander13.doc Rated: 2012

Issued 3/12/2012



ANCAP

Crash testing for safety

AUSTRALASIAN
NEW CAR ASSESSMENT
PROGRAM

www.ancap.com.au

TECHNICAL DATA - MITSUBISHI OUTLANDER - From Nov 2012

INJURY MEASUREMENTS

Body region	Offset Crash Test at 64km/h (v5.2)		Side Impact Crash Test at 50km/h (v5.2)
	Driver	Passenger	Driver
Head HIC	225	165	42
Acceleration (g for 3ms)	36.1	33.5	21.0
Neck - Shear (kN)	0.44	0.43	-
Tension (kN)	1.10	0.61	-
Extension (Nm)	20.7	10.0	-
Chest Accln (g for 3ms)	-	-	-
Compression (mm)	23.39	22.55	11.40
Viscous criterion (m/s)	0.07	0.08	0.05
Abdomen - Force (kN)	-	-	0.590
Pelvis - Force (kN)	-	-	1.260
Upper legs Force (kN)	Left	1.39	1.60
	Right	1.29	0.20
Knee displ (mm)	Left	2.30	3.60
	Right	2.50	0.60
Lower legs Force (kN)	Left	2.05	2.10
	Right	1.66	1.68
Index (Upper/Low)	Left	0.39 /0.18	0.30 /0.17
	Right	0.29 /0.23	0.2/0.18

Bonus points (maximum 5)

Pole Test: 2 pts

Seat belt reminders: 2 (see table below for details)

Modifiers - deductions from offset test scores

Head	No deduction
Chest	No deduction
Upper leg	No deduction
Lower leg	No deduction
Foot score	Blocked pedal
	Score 3.78 points

Modifiers - deductions from side impact test scores

Chest	No deduction
-------	--------------

Safety features

These specifications are subject to change. Please check with manufacturer for the latest specifications.



Driver airbag	S	Antilock (ABS) brakes / Electronic brake distribution / Brake Assist	S/S/S
Passenger front airbag	S	Electronic stability control (ESC, VSC, DSC, ESP, VSA)	S#
Side airbags, front seats - chest protection	S	3 point seat belt for all forward-facing seats	S
Side airbags, front seats - head protection	S	Whiplash protection (RCAR protocol)	Good
Side airbags, rear seats - head protection	S	Intelligent seat belt reminder - driver	S
Driver knee airbag	S	Intelligent seat belt reminder - front passenger	S
Seat belt pretensioners (Front/Rear outboard)	S/X	Intelligent seat belt reminder - rear seats	X*

Key: * rear seat belt reminders were fitted to the vehicle tested by Euro NCAP

S = standard on all variants

O = optional on base variant. May be standard on higher variants

V= not available on base variant but standard or optional on higher variants

X = not available on any variant

ESC required by ANCAP for 5 star rating from 2008



ANCAP

Crash testing for safety

AUSTRALASIAN
NEW CAR ASSESSMENT
PROGRAM

www.ancap.com.au